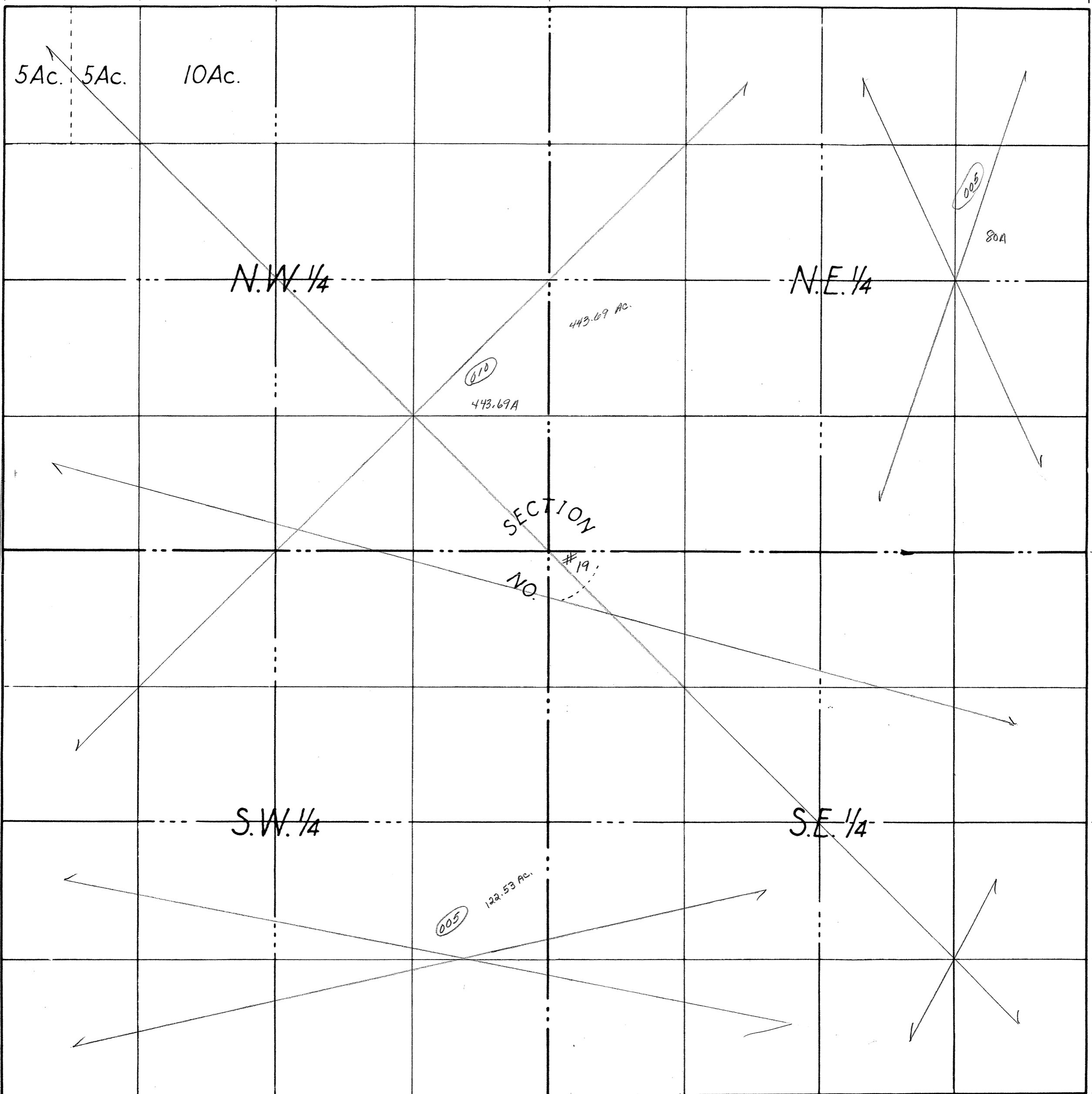


660' = 40 Rods 660' = 40 Rods

1320' = 80 Rods

2640' = 160 Rods



N.W. 1/4

N.E. 1/4

S.W. 1/4

S.E. 1/4

SECTION  
NO. 19

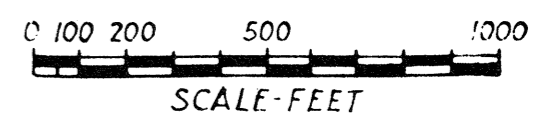
443.67 AC.

010  
443.67A

005  
122.53 AC.

005  
80A

COUNTY ARENA MICH.  
 TOWNSHIP ADAMS Twp.  
 RANGE T19N R3E  
 AREA Sec. # 19



NO. \_\_\_\_\_

DATE \_\_\_\_\_