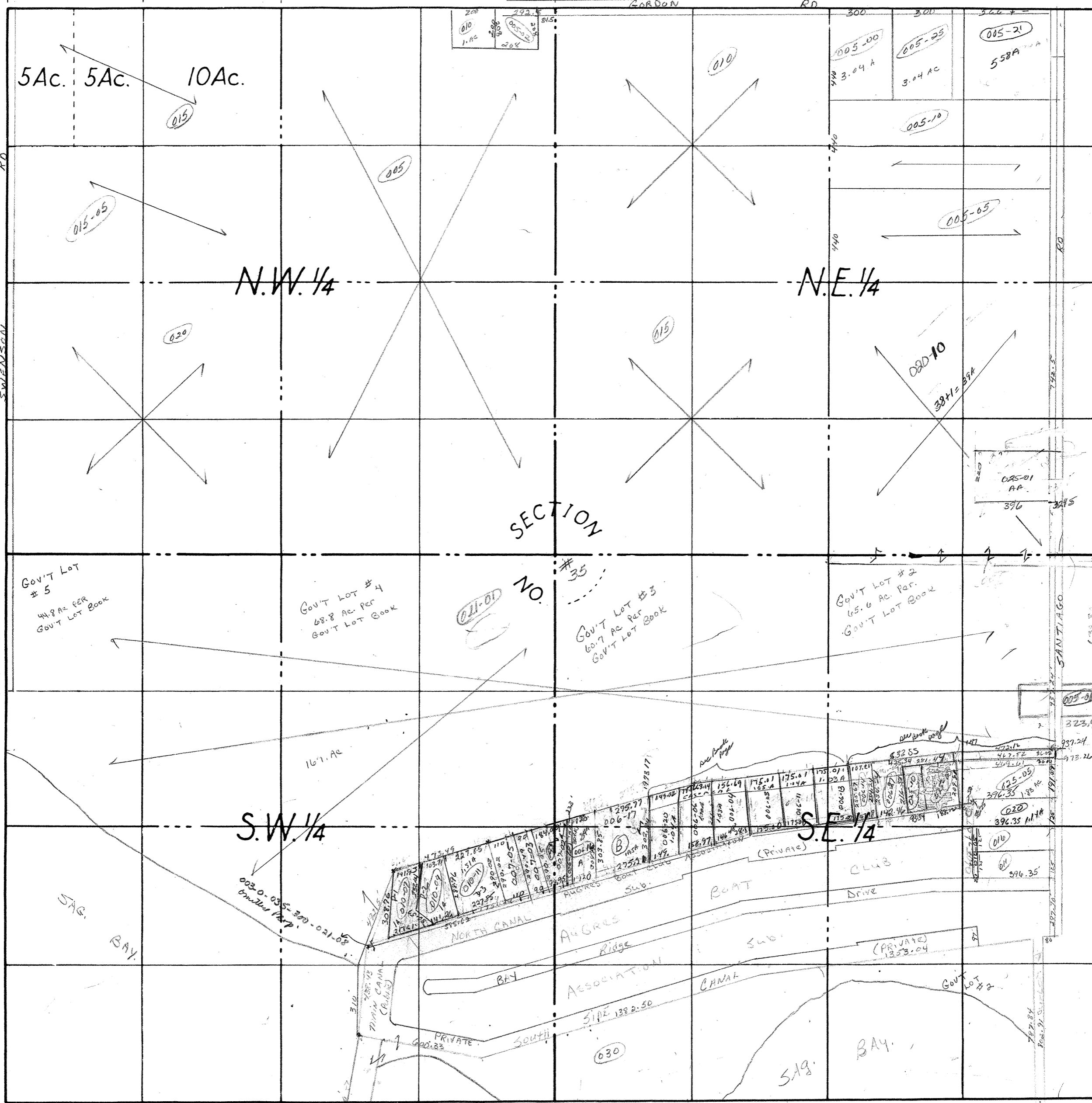




660' = 40 Rods + 660' = 40 Rods

1320' = 80 Rods

2640' = 160 Rods



2640' = 160 Rods

1320' = 80 Rods

660' = 40 Rods + 660' = 40 Rods

COUNTY ARENA MICH.  
 TOWNSHIP HUGRES Twp.  
 RANGE T19N R6E  
 AREA SEC. # 35



NO. \_\_\_\_\_ DATE \_\_\_\_\_