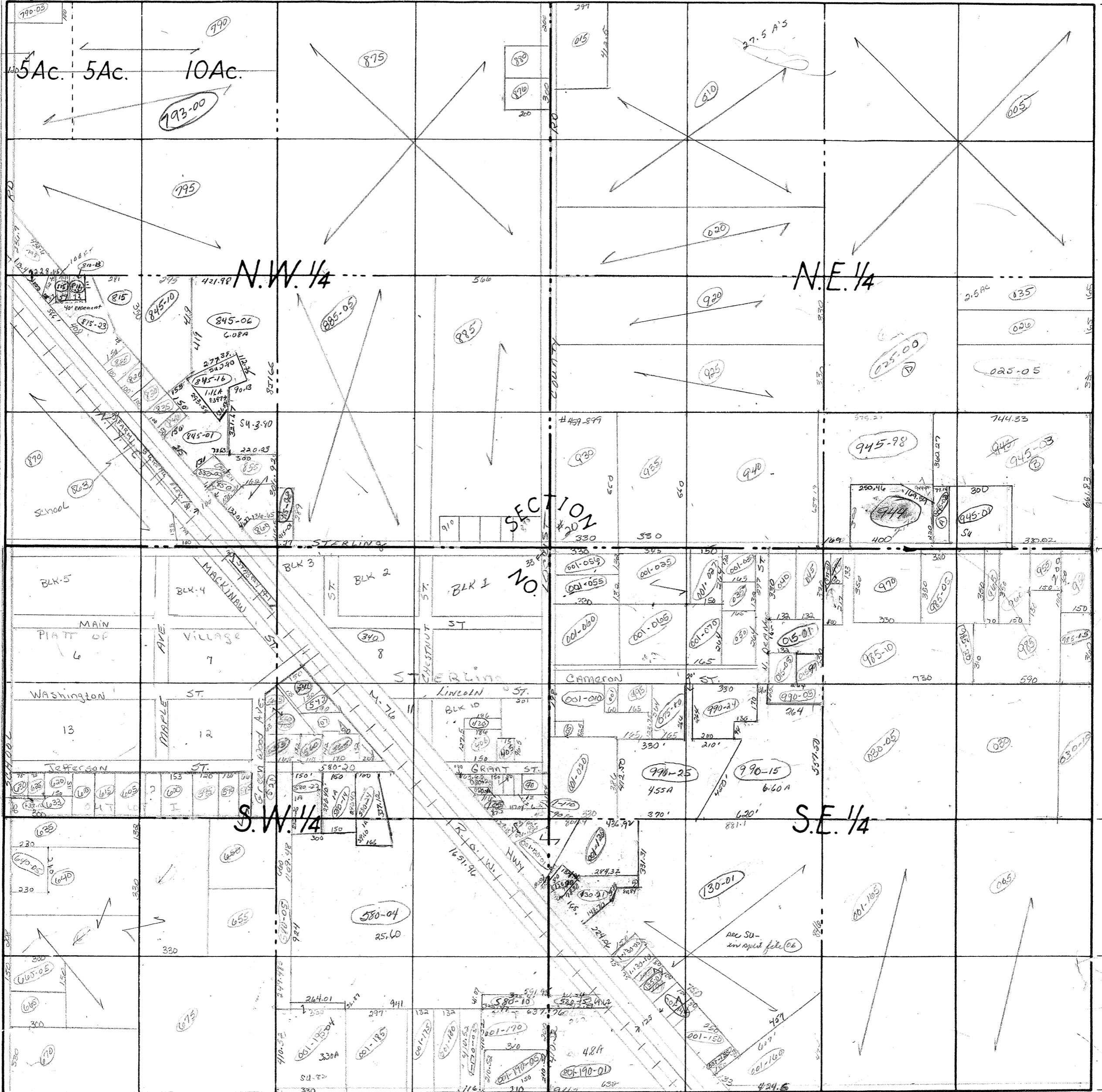


660' = 40 Rods

1320' = 80 Rods

2640' = 160 Rods

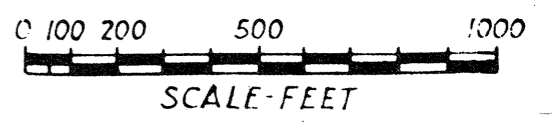


2640' = 160 Rods

1320' = 80 Rods

660' = 40 Rods

COUNTY Alcona MICH.
 TOWNSHIP Deep River tp
 RANGE T19N R4E
 AREA Sec. # 20



NO. _____

DATE _____