



660' = 40 Rods 660' = 40 Rods

1320' = 80 Rods

2640' = 160 Rods

5Ac. 5Ac.

10Ac.

N.W. 1/4

N.E. 1/4

OGEMAW COUNTY

SECTION

NO. #5

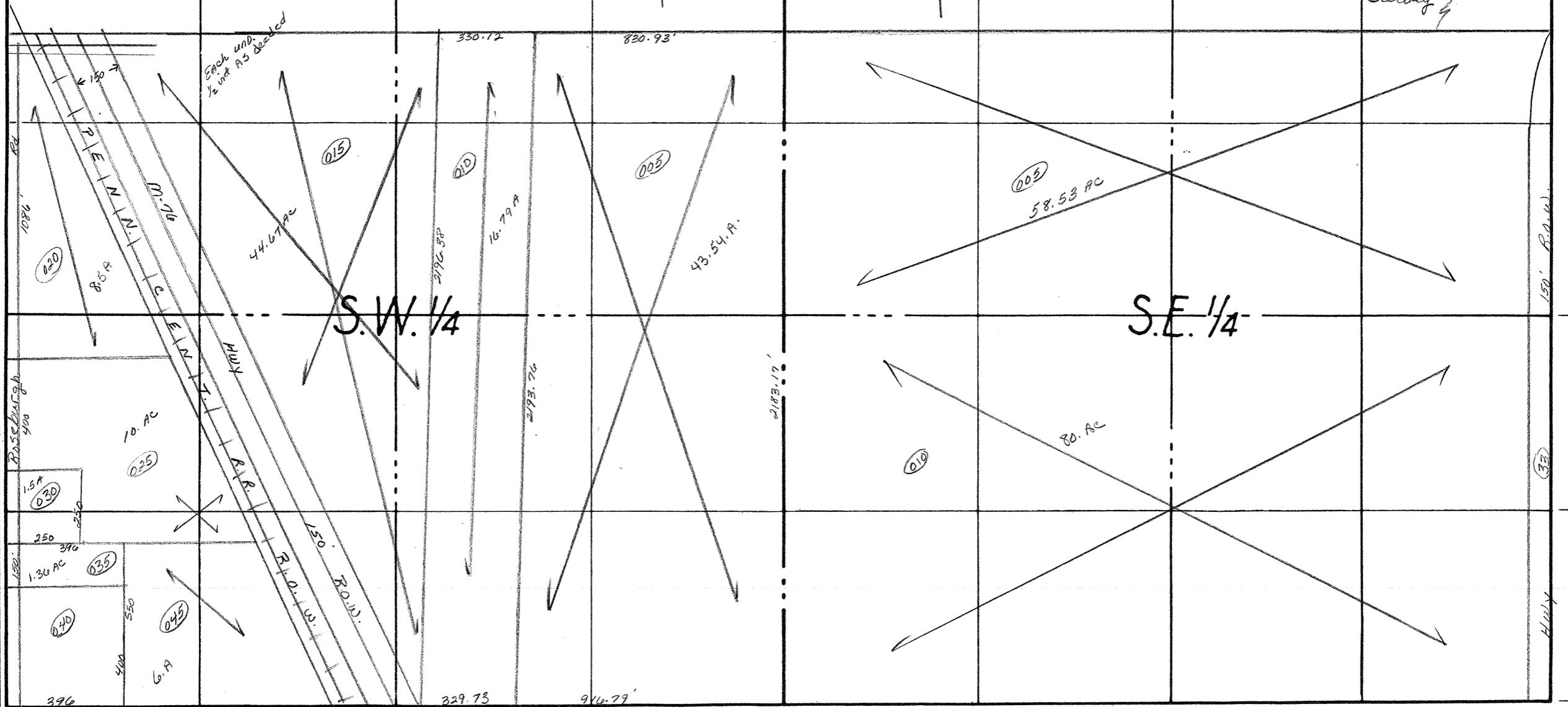
Sec. line as established by Original Gov. Land Survey

2640' = 160 Rods

1320' = 80 Rods

660' = 40 Rods

660' = 40 Rods



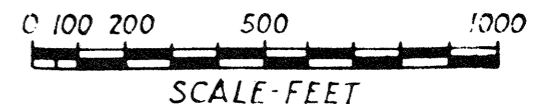
COUNTY ARENA MICH.

TOWNSHIP MOFFATT Twp.

RANGE T20N R3E

Sec. #5

AREA



NO.

DATE