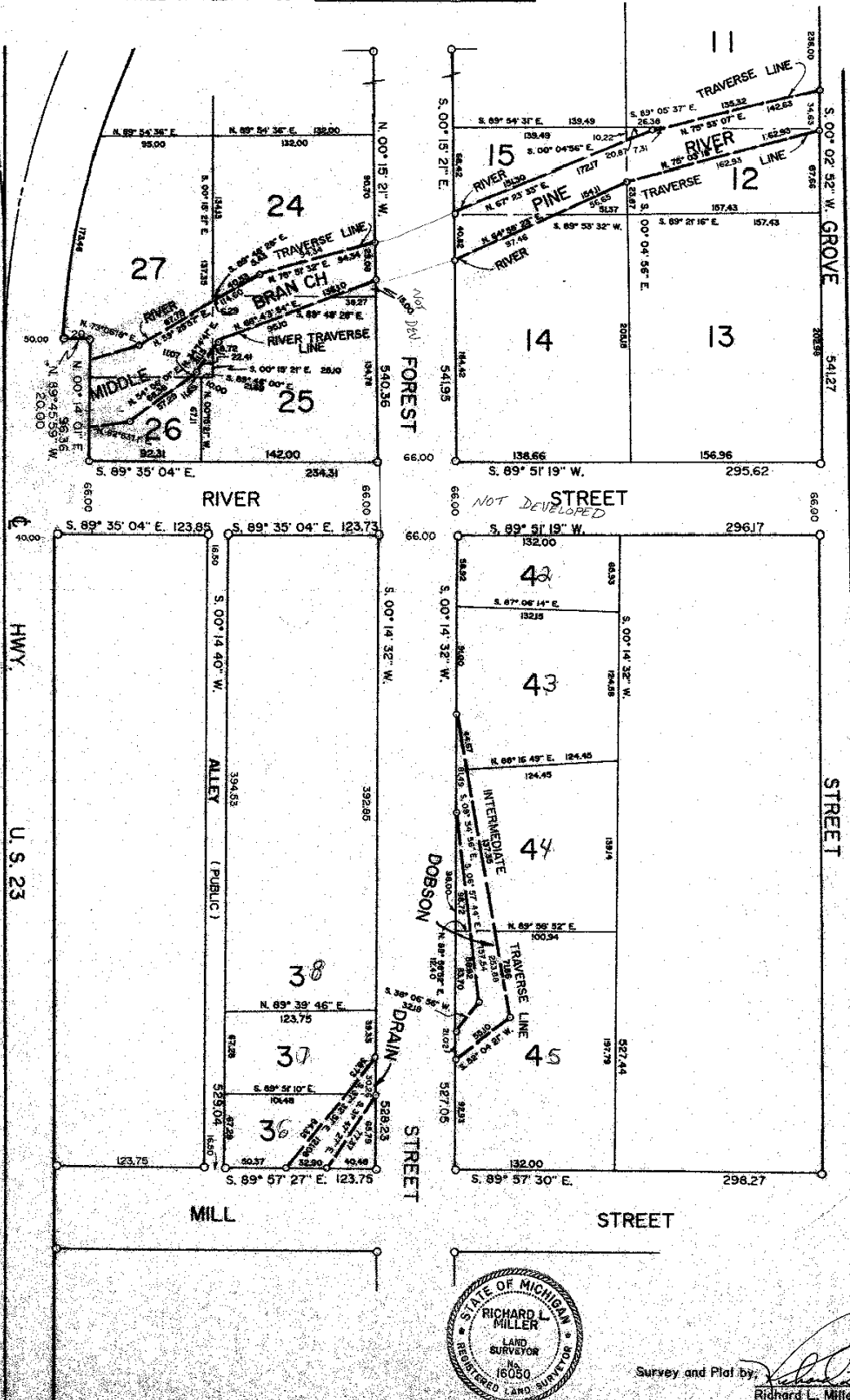
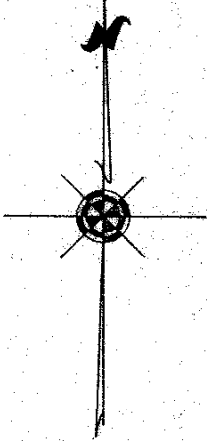
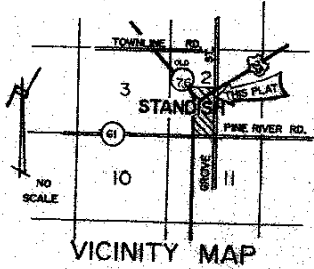
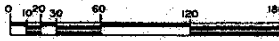


ASSESSOR'S PLAT OF CITY OF STANDISH NO. 1

A SUBDIVISION OF PART OF THE SE 1/4 OF THE SW 1/4 OF SECTION 2, T. 18 N. R. 4 E.
LINCOLN TOWNSHIP, ARENAC COUNTY
MICHIGAN

SCALE OF FEET 1" = 60'



- PLAT LEGEND**
1. ALL DIMENSIONS ARE IN FEET.
 2. CONCRETE MONUMENTS CONSISTING OF A SOLID STEEL ROD, 3/4" IN DIA. AND 36" IN LENGTH AND COMPLETELY REBARRED IN CONCRETE, 4" INCHES IN DIA., HAVE BEEN PLACED AT ALL POINTS MARKED THIS "O".
 3. CORNER MONUMENTS CONSISTING OF 3/4" STEEL RODS, AT LEAST 4" IN LENGTH, DRILLED, GROUTED AND CAPPED IN CEMENT WALKER ARE MARKED THIS "X".
 4. LOT CORNERS HAVE BEEN MARKED WITH 3/4" DIAMETER STEEL RODS AT LEAST 18 INCHES IN LENGTH. LOT CORNERS MARKED WITH DRILL HOLES OR "H.C." NAILS IN CONCRETE ARE MARKED THIS "X".
 5. BEARINGS WERE ESTABLISHED FROM PLANS ON FILE OF THE MICHIGAN DEPARTMENT OF TRANSPORTATION FOR HIGHWAY U.S. 23 (FILE NO. 5-R-2 SHEET 19)



Survey and Plat by: *[Signature]*
Richard L. Miller
Registered Land Surveyor No. 16050