

# BEAUCH'S ADDITION TO THE CITY OF AUGRES

A SUBDIVISION OF PART OF THE S1/2 OF NW1/4 OF SECTION 13 T19N R6E  
AUGRES TOWNSHIP ARENAC COUNTY, MICHIGAN.

INSIDE R/W CURVE DATA

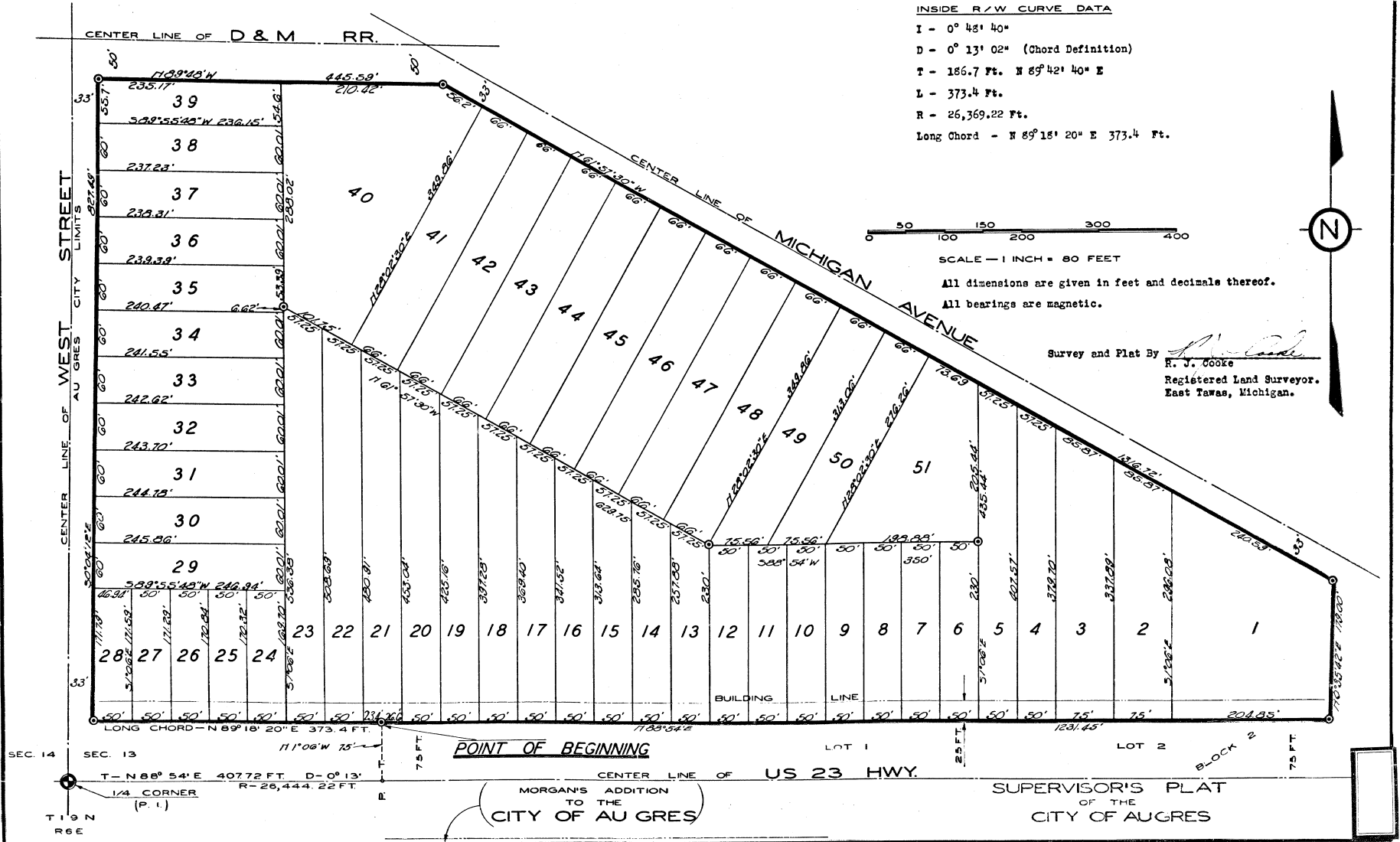
I - 0° 48' 40"  
D - 0° 13' 02" (Chord Definition)  
T - 186.7 Ft. N 89° 42' 40" E  
L - 373.4 Ft.  
R - 26,369.22 Ft.  
Long Chord - N 89° 18' 20" E 373.4 Ft.



SCALE - 1 INCH = 80 FEET

All dimensions are given in feet and decimals thereof.  
All bearings are magnetic.

Survey and Plat By *R. J. Cooke*  
R. J. Cooke  
Registered Land Surveyor.  
East Tawas, Michigan.



POINT OF BEGINNING  
MORGAN'S ADDITION  
TO THE  
CITY OF AUGRES

SUPERVISOR'S PLAT  
OF THE  
CITY OF AUGRES

SEC. 14  
T 19 N  
R 6 E  
SEC. 13  
T - N 89° 54' E 407.2 FT. D - 0° 13'  
1/4 CORNER R - 26,444.22 FT.  
(P. 1.)