

4-21-47

# SUPERVISOR'S PLAT OF LACROIX SHORES

### DEDICATION

A SUBDIVISION OF PART OF W1/2 OF W1/2 OF FRACTIONAL SECTION 16 T19N R7E

### DESCRIPTION OF LAND PLATTED

KNOW ALL MEN BY THESE PRESENTS, That I, Henry Dittenber Sr. Supervisor of the Township of Sims of Arenac County, State of Michigan, by virtue of authority in me vested by Section 51, Act 172, of 1929, having been duly authorized by the Sims Township Board have caused the land described in the annexed plat to be surveyed, laid out and platted, to be known as "Supervisor's Plat of LA CROIX SHORES a subdivision of part of W<sup>1</sup>/<sub>2</sub> of W<sup>1</sup>/<sub>2</sub> of Fractional section 16 T19N R7E Sims Township Arenac County, Michigan".

SIMS TOWNSHIP ARENAC COUNTY, MICHIGAN

The land embraced in the annexed plat of Supervisor's Plat of LA CROIX SHORES a subdivision of part of W<sup>1</sup>/<sub>2</sub> of W<sup>1</sup>/<sub>2</sub> of Fractional section 16 T19N R7E Sims Township Arenac County, Michigan is described as follows: From the section corner common to sections 8, 9, 16 and 17 T19N R7E Sims Township Arenac County, Michigan thence S 3°45' W 889.89 feet to Point of Beginning, Thence S 3°45' W 311.97 feet, thence N 80°33' 24" E 500.93 feet, thence N 86°59' 24" E 833.75 feet, thence N 3°21' E 379.23 feet, thence S 82°52' 16" W 506.32 feet, thence S 81°01' 06" W 836.22 feet to Point of Beginning.

### CERTIFICATE OF APPROVAL BY BOARD OF COUNTY ROAD COMMISSIONERS

This plat has been examined and was approved on the 1 day of April 1947 by the Arenac County Board of Road Commissioners.

Earl H. Foster Chairman.  
James Daniels Member.  
G. B. Hoat Member.

### SURVEYOR'S CERTIFICATE

I hereby certify that the plat hereon delineated is a correct one and that permanent metal monuments consisting of bars not less than one-half inch in diameter and 48 inches in length encased in a concrete cylinder at least 4 inches in diameter and 48 inches in depth have been placed at points marked thus  $\odot$  as thereon shown at all angles in the boundaries of the land platted as shown on said plat.

Examined and Approved  
R. J. Cooke Registered Land Surveyor.  
East Tawas, Michigan.

### CERTIFICATE OF APPROVAL BY COUNTY BOARD

This plat was approved on the 10th day of April 1947.

Avis Black Register of Deeds.  
Ada Whiting County Clerk.  
Claude E. Upton County Treasurer.

Examined and Approved  
Mayme Jowell Purdy Deputy Auditor General  
FILED IN AUDITOR GENERAL'S DEPT.  
April 25, 1947  
Mayme Jowell Purdy Deputy Auditor General

### CERTIFICATE OF MUNICIPAL APPROVAL

This plat was approved by the Township Board of the Township of Sims at a meeting held March 31, 1947.

Dab Millett Sims Township Clerk.

### Witnesses:

R. J. Cooke  
Theodore Relchie

Supervisor of the Township of Sims.

### ACKNOWLEDGMENT

STATE OF MICHIGAN, )  
County of Iosco ) ss.

On this 31st day of March A. D. 1947, before me, a Notary Public in and for said county, personally came the above named Henry Dittenber Sr. Supervisor of the Township of Sims known to me to be the person who executed the above dedication, and acknowledged the same to be his free act and deed as such Supervisor.

R. J. Cooke  
Notary Public in and for Iosco County.  
My Commission expires July 12, 1947.

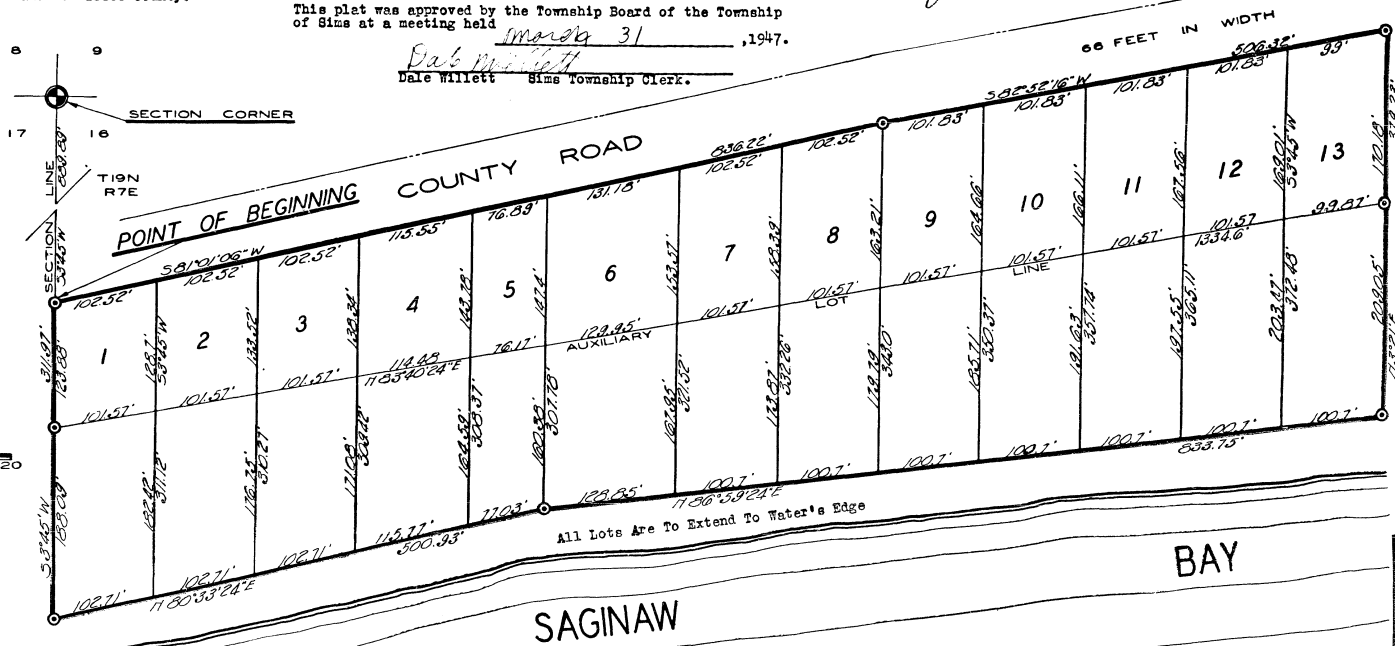
Register's Office  
Arenac County, ) ss.

Plat of Supervisor's Plat of Lacroix Shores, Arenac County, Michigan  
Witnessed Island day of April 1947 at 10:30 o'clock  
at Place of Sims of State of Michigan  
Avis Black  
ORIGINAL ON FILE

I HEREBY CERTIFY THAT THIS COPY IS A TRUE COPY OF THE ORIGINAL PLAT FOR RECORD IN THE REGISTER OF DEEDS FOR ARENAC COUNTY, MICHIGAN.  
Examined April 21, 1947  
Mayme Jowell Purdy  
Deputy Auditor General

SCALE - 1 INCH = 80 FEET

All dimensions are given in feet and decimals thereof.  
All bearings are magnetic.



30210