

COPY

# "LAFAVE SUBDIVISION NO.2"

40591

PART OF GOVERNMENT LOT 2, SECTION 29, T18N, R5E, STANDISH TWP ARENAC CO MICHIGAN



SCALE: 1"=100'

ALL DISTANCES ARE IN FEET AND DECIMALS THEREOF

ARTHUR H. LEACH RE. BRIDGEPORT MICH.

### SURVEYOR'S CERTIFICATE

I hereby certify that the plat hereon delineated is a correct one, and that permanent monuments consisting of iron rods at least one half inch in diameter and 36 inches in length, encased in concrete cylinders four inches in diameter and 36 inches in length have been set at points marked thus (O) as thereon shown at all angles in the boundaries of the land platted, at all intersections of the lines of streets and at intersections of the lines of streets with the boundaries of the plat.

Arthur H. Leach  
Registered Civil Engineer No. 7236

### DEDICATION

KNOW ALL MEN BY THESE PRESENTS, that we George LaFave and Hortense LaFave, his wife, as proprietors, have caused the land embraced in the annexed plat to be surveyed, laid out and platted, to be known as "LA FAVE SUBDIVISION NO. 2", a subdivision of part of Government Lot 2, Section 29, T 18 N, R 5 E, Standish Township, Arenac County, Michigan and that the street as shown on said plat are hereby dedicated to the use of the public.

Signed and Sealed in the Presence of:

Douglas C. Black  
Witness

George LaFave  
L.S.

Avis Black  
Witness  
Register of Deeds

Hortense LaFave  
L.S.

### DESCRIPTION OF LAND PLATTED

The land embraced in the annexed plat of "LA FAVE SUBDIVISION NO. 2," a subdivision of part of Government Lot 2, Section 29, T 18 N, R 5 E, Standish Township, Arenac County, Michigan Described as follows:

Beginning at a point S 89° 21' E - 1393.75 feet, thence N 0° 30' E - 595 feet from the center of Section 29, T 18 N, R 5 E, Standish Township, Arenac County, Michigan and running thence N 89° 21' W - 200 feet, thence N 10° E - 365.58 ft., thence S 89° 21' E - 400.93 feet to point "A" in the traverse line along the shore of Saginaw Bay, thence S 89° 21' E - 50 feet more or less to the shore of Saginaw Bay, thence Southwesterly along said shore line 304.65 feet more or less, thence N 89° 21' W - 50 feet more or less to point "B" in the traverse line along said shore line. Said point "B" being located S 10° W - 304.65 feet from point "A", thence N 89° 21' W - 190 feet, thence S 10° W - 60.93 feet, thence N 89° 21' W - 10.93 feet to point of beginning. Containing 11 lots numbered 28 to 38 inclusive. All waterfront lots extend to waters edge.

### ACKNOWLEDGMENT

STATE OF MICHIGAN  
County of Arenac

On this 17th day of August, 1958, before me, a Notary Public in and for said County, personally came the above named George LaFave and Hortense LaFave, his wife, known to me to be the persons who executed the above dedication and acknowledged the same to be their free act and deed.

Douglas C. Black  
Notary Public, Arenac County

My Commission Expires May 17, 1960.

### COUNTY TREASURER'S CERTIFICATE

Office of County Treasurer, Arenac County.  
I hereby certify, that there are no tax liens or titles held by the State on the lands described hereon, and that there are no tax liens or titles held by individuals on said lands, for the five years preceding the 1st day of August, 1958 and that the taxes for said period of five years are all paid, as shown by the records of this office. This certificate does not apply to taxes, if any, now in process of collection by township, city or village collecting officers.

Harry McCreedy  
County Treasurer

### APPROVAL BY COUNTY PLAT BOARD

This plat was approved on the 17th day of August, 1958 by the Arenac County Plat Board.

Avis Black (County Register of Deeds)  
Douglas C. Black (County Clerk)  
Harry McCreedy (County Treasurer)  
Arlie McCreedy (County Drain Commissioner)

### APPROVAL BY BOARD OF COUNTY ROAD COMMISSIONERS

This plat has been examined and was approved on the 16th day of August, 1958 by the Arenac County Board of Road Commissioners.

John C. Adams (Chairman)  
Ross Ferrin (Member)  
Thomas Logan (Member)

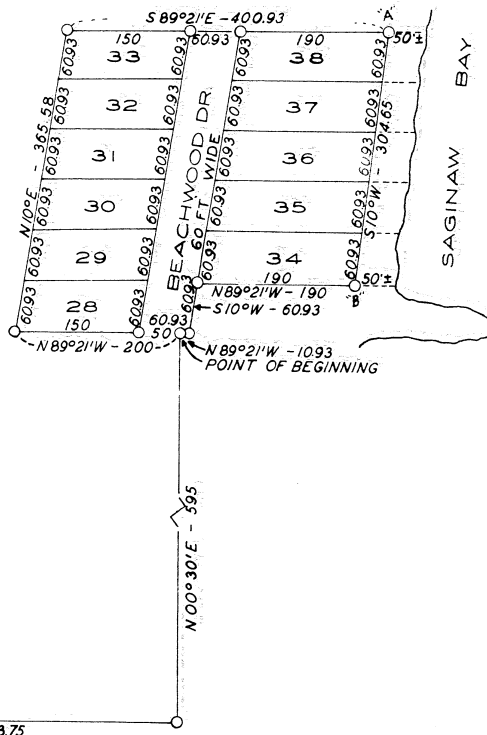
### MUNICIPAL APPROVAL

This plat was approved by the Township Board of the Township of Standish at a meeting held April 24, 1958.

Burdett Milne (Clerk)

LAFAVE ROAD

CENTER OF SECTION 29, T18N, R5E



Handwritten notes and signatures including dates: August 12, 1958; August 21, 1958; August 14, 1958. Signatures include D. L. Maas & Son.