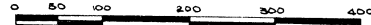


MARGARET K. LAPORTE SUBDIVISION

PART OF GOV'T. LOT 3, SECTION 24, T20N, R7E WHITNEY TWP., ARENAC COUNTY, MICHIGAN



SCALE 1" = 100'
ALL DIMENSIONS IN FEET AND DECIMALS THEREOF

CENTER OF SECTION 24
T20N, R7E

DEDICATION

KNOW ALL MEN BY THESE PRESENTS, That I, Margaret K. LaPorte, a married woman, as proprietor, have caused the land embraced in the annexed plat to be surveyed, laid out and platted, to be known as MARGARET K. LAPORTE SUBDIVISION, Part of Gov't. Lot 3, Sec. 24, T20N, R7E, Whitney Township, Arenac County, Michigan, and that the roads as shown on said plat are hereby dedicated to the use of the public.

Signed and Sealed in Presence of

Patrick D. Neering
Patrick D. Neering
Luella C. Helme Reich

Margaret K. LaPorte (L.S.)
Margaret K. LaPorte

DESCRIPTION

The land embraced in the annexed plat of Margaret K. LaPorte Subdivision, Part of Gov't. Lot 3, Sec. 24, T20N, R7E, Whitney Township, Arenac County, Mich. is described as follows: Beginning on the E. & W. $\frac{1}{4}$ line of Sec. 24, T20N, R7E, 1189.50 feet East from the Center of Sec. 24, T20N, R7E, thence S. 89° 42' 12" E. 1345.42 feet, thence S. 89° 55' 30" E. 483.70 feet to the centerline of US-23, thence N. 12° 50' 15" along said centerline 136.37 feet to point of curvature, thence along the curve on centerline of US-23 (198° 42' W) 1211.65 feet to the intersection of the E. & W. $\frac{1}{4}$ line, thence West 476.08 feet to the Point of Beginning.
This plat contains 13 lots numbered from 1 to 13 inclusive.

SURVEYOR'S CERTIFICATE

I hereby certify that the plat hereon delineated is a correct one and that permanent metal monuments consisting of bars not less than one-half inch in diameter and 36 inches in length, or shorter bars of not less than one-half inch in diameter lapped over each other at least 6 inches with an over-all length of not less than 36 inches, encased in a concrete cylinder at least 4 inches in diameter and 36 inches in depth have been placed at points marked thus (O) at the intersections of roads, and at the intersections of roads with the boundaries of the plat as shown on said plat.

H. J. Edmonds
H. J. Edmonds \$3699
Registered Land Surveyor

ACKNOWLEDGMENT

On this 11th day of August 1959, before me, a Notary Public in and for said county, personally came the above named Margaret K. LaPorte known to me to be the person who executed the above dedication, and acknowledged the same to be her free act and deed.

My Commission expires:

July 26, 1960
Patrick D. Neering
Patrick D. Neering
Notary Public Bay Co., Mich.

CERTIFICATE OF MUNICIPAL APPROVAL

This plat was approved by the Township Board of Whitney Township at a meeting held

August 11, 1959
Ruth Edmonds Township Clerk

CERTIFICATE OF APPROVAL BY BOARD OF COUNTY ROAD COMMISSIONERS

This plat has been examined and was approved on the 11th day of Oct 1959 by the Arenac County Board of Road Commissioners

Thomas C. Logan
Thomas C. Logan Chairman
Ross A. Perrin
Ross A. Perrin Member
Charles Dittender
Charles Dittender Member

CERTIFICATE OF APPROVAL BY COUNTY PLAT BOARD

This plat was approved on the 7th day of Sept 1959 by the Arenac County Plat Board.

Aris Black
Aris Black Register of Deeds
Douglas C. Black
Douglas C. Black County Clerk
Harry McCreedy
Harry McCreedy County Treasurer
Archie McCreedy
Archie McCreedy Drain Commissioner

COUNTY TREASURER'S CERTIFICATE RELATING TO TAXES
(Sec. 135, Act 206, 1843 as amended - Sec. 211.135, C.L. 1948)

I hereby certify that there are no tax liens or titles held by the State on the lands described hereon, and that there are no tax liens or titles held by individuals on said lands, for the five years preceding the 11th day of Oct 1959 and that the taxes for said period of five years are paid, as shown by the records of this office.
This certificate does not apply to taxes, if any, now in process of collection by township, city or village collecting officers.

Harry McCreedy
Harry McCreedy County Treasurer

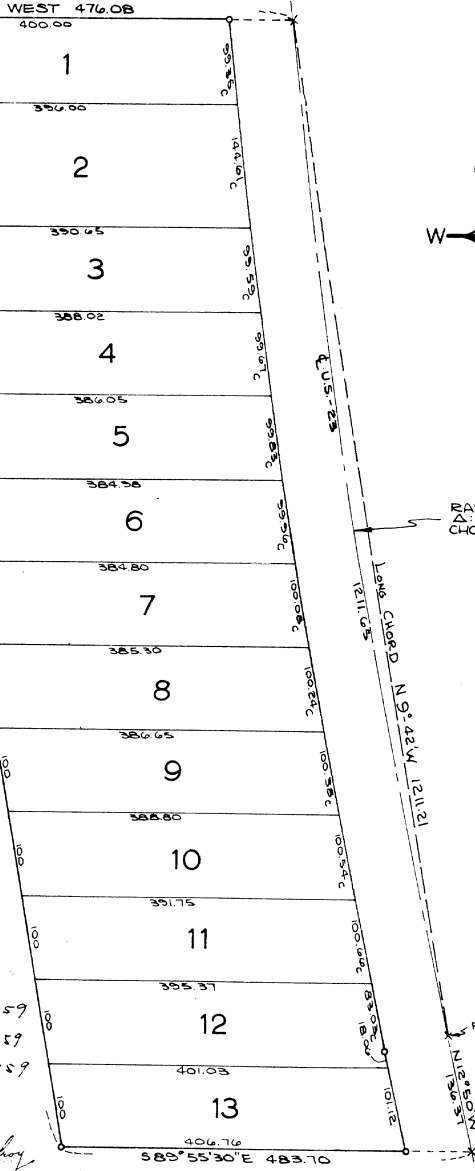
Margaret K. LaPorte
Margaret K. LaPorte
16th day of
August 1959
Aris Black

CERTIFICATE AS TO STATE TRUNK LINE OR FEDERAL AID ROADS

We hereby certify that said plat appears to include land located on a state trunk line or federal aid road.

Aris Black
Aris Black, Register of Deeds
Harry McCreedy
Harry McCreedy, County Treasurer
Douglas C. Black
Douglas C. Black, County Clerk
Archie McCreedy
Archie McCreedy, Drain Commissioner

November 13, 1959
December 14, 1959
November 13, 1959
D. L. MacFarland



RADIUS: 1226.3'
Δ: 5° 35' 40"
CHORD: 1211.21'

Long Chord N 91° 42' 12" W 1211.65'

42487