

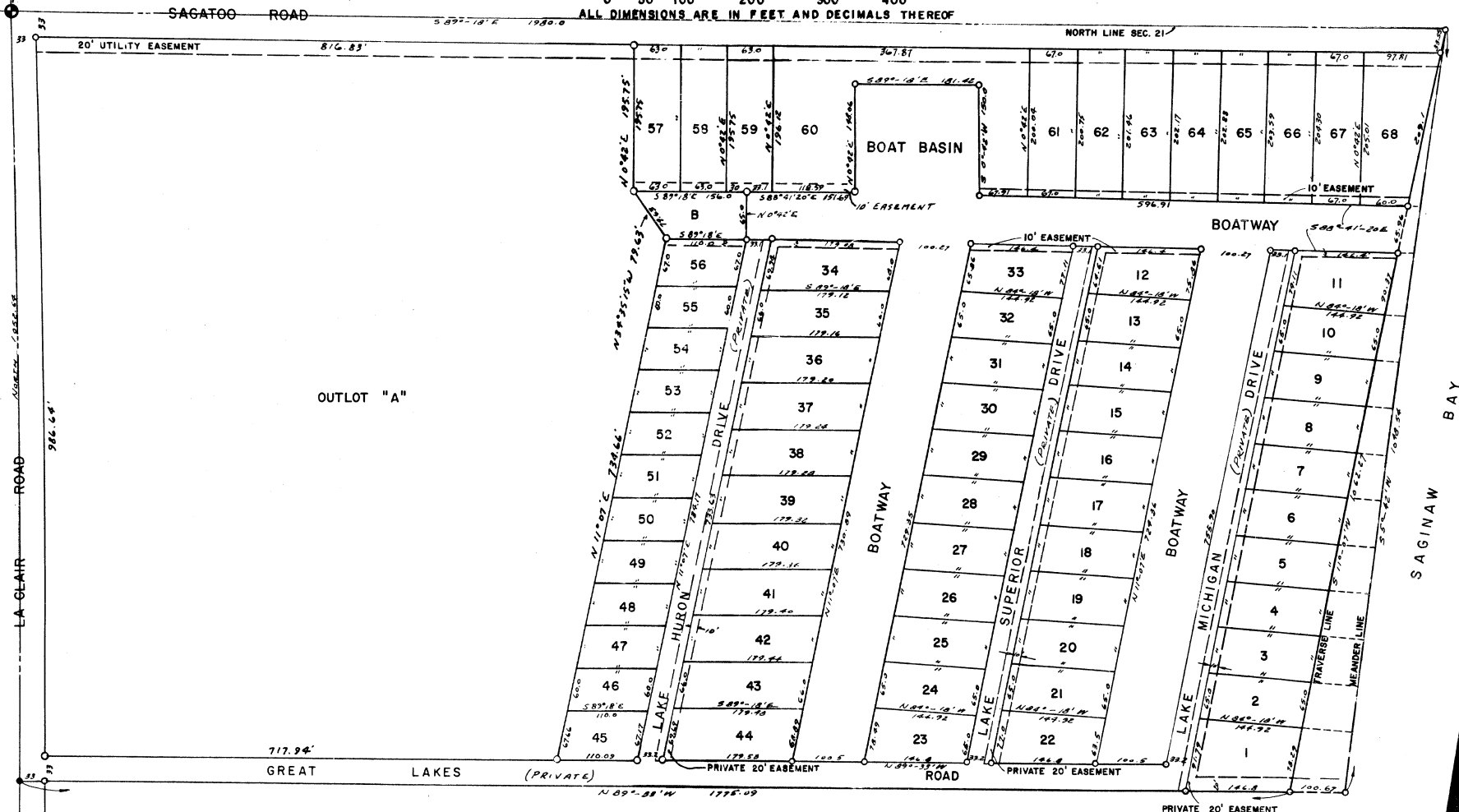
GREAT LAKES SHORES MARINA

PART OF N 1/2 OF THE NW 1/4 SECTION 21, T18N, R5E
 LYING WEST OF SAGINAW BAY
 STANDISH TWP., ARENAC COUNTY, MICHIGAN

SCALE: 1" = 100'



P.O.B.
 NW CORNER SEC. 21
 T18N, R5E



NOTE:
 LOTS 1 THROUGH 11 ALL EXTEND
 TO MEANDER LINE



Kraft, Vass & Associates
 CONSULTING & DESIGNING ENGS.

520 W. THIRD ST. FLINT 3, MICH. PHONE 3-3903

44077