

COPY  
 Register's Office  
 Arenac County, S.S.  
 Plat of Parkinson Subdivision  
 City of Augres  
 was Recorded this 2nd day of  
February A.D., 1966 at 10 o'clock  
A.M. in Liber 5 of Plate  
 on Page 24  
Lawrence Brown  
 Register of Deeds

I hereby certify that a copy of map or plat forwarded the Register of Deeds for recording.  
 Date September 2, 1966  
 FILED IN DEPT. OF TREASURY  
 Date October 6, 1966  
 EXAMINED AND APPROVED  
 Date September 30, 1966  
Alison Green  
 ALLISON GREEN  
 STATE TREASURER  
 By Richard E. Lomas  
 Richard E. Lomas - Plat Examiner

# "PARKINSON SUBDIVISION"

## A REPLAT OF PART OF LOT NO 5 BLOCK NO 14 SUPERVISOR'S PLAT OF THE CITY OF AUGRES, SEC. 24 T. 19 N. R. 6 E. ARENAC COUNTY, MICHIGAN.

0 50 100 150 200  
 SCALE 1"=100'

NOTE: all dimensions are in feet and decimal thereof.  
 all curve distances are measured along arc of curves.

NE Corner Lot 5  
 Block 14, Supervisor's Plat  
 of Augres, Mich.  
 SEC 24 T. 19 N. R. 6 E.  
 SEC 24 T. 19 N. R. 6 E.



County Treasurer's certificate relating to taxes (Sec. 135, 204, 1898), as amended Sec. 211.135, CL 1949) Office of County Treasurer, Arenac County, I hereby certify, that there are no tax liens or titles held by the State on the lands described hereon, and that there are no tax liens or titles held by individuals on said lands, for five years preceding the 5th day of February 1966 and that the taxes for said period of five years are paid, as shown by records of this office.

This certificate does not apply to taxes, if any, now in process of collection by Township collecting officers.

Harry M. Gready  
 HARRY M. GREADY, COUNTY TREASURER

### SURVEYOR'S CERTIFICATE

I hereby certify that the plat hereon delineated is correct and that permanent metal monuments consisting of iron rods at least one half inch in diameter and thirty six inches in length encased in concrete cylinder at least four inches in diameter and thirty six inches in length have been placed at all points marked thus "O" as there on shown at all angles in the boundary of said plat, at the intersection of lines of streets and at the intersection of lines of streets with the boundaries of plat as shown on said plat.

Prepared and Drafted by  
Lewis M. Wrenn  
 LEWIS M. WRENN, P.E.  
 Registered Professional Engineer  
 11 Niagara  
 Pontiac, Mich.

### CERTIFICATE OF MUNICIPAL APPROVAL

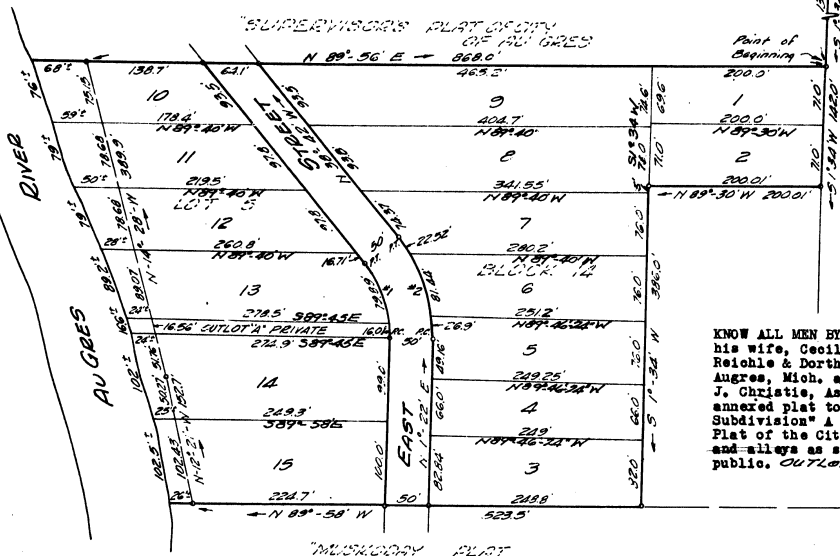
This plat was approved by the Common Council of the City of Augres, Arenac Co. Mich. at a meeting held September 2, 1965 and is in compliance with Section 19a, and that the width of lots conform with the requirements of Section 30, Act 172, of 1929, as amended.

Ordeal Brown  
 ORDEAL BROWN, Clerk

### DESCRIPTION OF LAND PLATED

The land embraced in the annexed plat of "PARKINSON SUBDIVISION" is a replat of part of Lot No. 5 Block No. 14 SUPERVISOR'S PLAT of the City of Augres, Arenac County, Mich.

is described as follows: Beginning at the West side of Main St. bearing S. 1° 34' W. 132 ft. from the N.E. corner of Lot 5, Block 14, Supervisor's Plat of Augres, Mich., thence S. 1° 34' W. along the West line of Main St. 142 ft., thence N. 89° 56' W. 200.01 ft., thence S. 1° 34' W. 386 ft., thence N. 89° 56' W. 533.5 ft., thence N. 12° 21' W. 152.7 ft.; thence N. 14° 28' W. 389.9 ft., thence N. 89° 56' E. 868 ft. to the point of beginning. This plat contains 15 lots, numbered from 1 to 15 both inclusive and Outlot "A" is private and dedicated to the use of lot owners in this plat only. All water front lots extend to waters edge of Augres River.



CURVE DATA

M	40'-00"	40'-00"
D	137'-13"	187'-13"
T	500'	68'-23"
L	95.90'	130'-60"
C	93.95'	128'-21"
Ch	N 18°-00' W	N 18°-00' W

### DEDICATION

KNOW ALL MEN BY THESE PRESENTS, That We Allen Parkinson & Lila Parkinson, his wife, Ceoil R. Hartwick & Lillian Hartwick, his wife & Irvin R. Reichle & Dorothy M. Reichle, his wife as Proprietors and Augres State Bank, Augres, Mich., a Michigan Corporation by Irvin E. Reichle, President & Edwin J. Christie, Asst. Cashier as Mortgagee have caused the land embraced in annexed plat to be surveyed, laid out & platted to be known as "Parkinson Subdivision" A replat of part of Lot No. 5 Block No. 14, Supervisor's Plat of the City of Augres, Arenac County, Michigan, and that the streets and-always as shown on said plat are hereby dedicated to the use of the public. OUTLOT "A" is private and dedicated to the use of Lot owners

Augres State Bank  
 Augres, Mich.  
Irvin E. Reichle President (L.S.)  
Edwin J. Christie Asst. Cashier (L.S.)  
 Edwin J. Christie

Allen Parkinson L.S.  
 Allen Parkinson - 2157 Greer Blvd.  
 Keego Harbor, Mich.  
Lila Parkinson L.S.  
 Lila Parkinson - 2157 Greer Blvd.  
 Keego Harbor, Mich.  
Cecil B. Hartwick L.S.  
 Cecil R. Hartwick - East St.  
 Augres, Mich.  
Lillian Hartwick L.S.  
 Lillian Hartwick - East St.  
 Augres, Mich.  
Irvin E. Reichle L.S.  
 Irvin E. Reichle - East St.  
 Augres, Mich.  
Dorothy M. Reichle L.S.  
 Dorothy M. Reichle - East St.  
 Augres, Mich.

Signed and Sealed in the Presence of  
Ordeal Brown  
 Ordeal Brown, Augres, Mich.  
Alma Cordova  
 Alma Cordova, Augres, Mich.

### ACKNOWLEDGMENT

STATE OF MICHIGAN ) ss.  
 County of Arenac )  
 On this 12th day of JULY A.D. 1965, before me, a Notary Public, in and for said county, personally came the above named Allen Parkinson & Lila Parkinson, his wife, Ceoil R. Hartwick & Lillian Hartwick, his wife, Irvin E. Reichle & Dorothy M. Reichle, his wife, known to me to be the persons who executed the above dedication and appeared & Irvin E. Reichle & Edwin J. Christie, who being each by me duly sworn duly sworn, did say that they are the President & Asst. Cashier of the Augres State Bank, Augres, Mich., a Michigan Corporation and that the seal affixed to said instrument is the corporate seal of said Corporation and that said instrument was signed & sealed in behalf of said Corporation by authority of its Board of Directors and the said Irvin E. Reichle & Edwin J. Christie acknowledged the same to be their free act & deed and free act & deed of said Corporation.

Alma Cordova  
 Notary Public - Arenac County  
 Alma Cordova  
 AUGRES, MICH.

My Commission expires 11-26-67

### APPROVAL BY COUNTY PLAT BOARD

This plat was approved on the 5th day of February, 1966 by the Arenac County Plat Board

Alvin Black  
 Alvin Black (County Register of Deeds)  
Ordeal Brown  
 Ordeal Brown (County Clerk)  
Harry M. Gready  
 Harry M. Gready (County Treasurer)  
Michael Pavolka  
 Michael Pavolka (County Drain Commissioner)