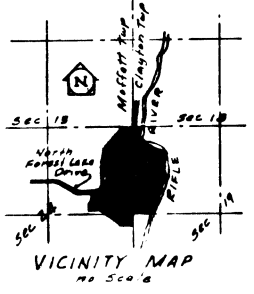
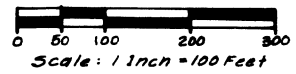
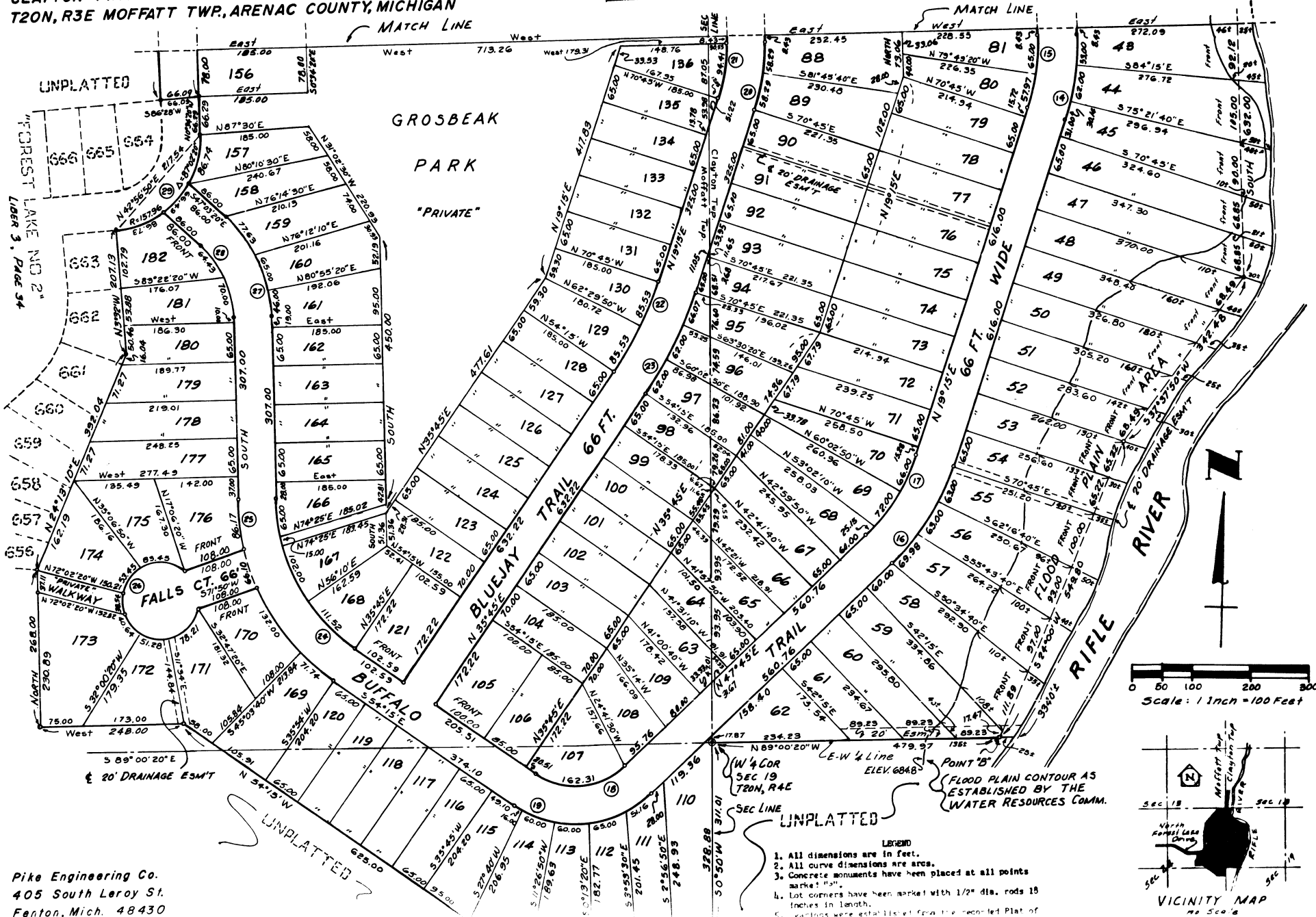


# "FOREST LAKE-RIVER BLUFFS"

PART OF THE N.W. FRAC 1/4 SEC. 19, T20N, R4E  
CLAYTON TWP. AND PART OF THE EAST 1/2 OF SEC. 24,  
T20N, R3E MOFFATT TWP., ARENAC COUNTY, MICHIGAN

Sheet 2 of 3

Curve No.	14	15	16	17	18	19	20	21	22	23	24	25	26	27	28	29
Radius	432.00	243.00	946.00	328.00	114.25	185.25	347.00	281.00	246.00	310.00	275.00	260.00	240.00	225.00	163.00	187.00
Angle	191°	28°30'	28°30'	28°30'	78°00'	78°00'	14°18'	14°18'	14°18'	14°18'	24°12'	24°12'	24°12'	24°12'	118°15'W	118°15'W
Chord Bearing	S1°27'30"W	S79°30'W	S33°30'W	S86°45'W	S86°45'W	S86°45'W	S86°45'W	S86°45'W	S86°45'W	S86°45'W	S86°45'W	S86°45'W	S86°45'W	S86°45'W	S86°45'W	S86°45'W
Chord Length	141.48	180.24	193.97	161.48	168.07	238.74	114.68	91.35	170.27	184.41	222.68	242.86	242.86	242.86	128.37	130.68



- LEGEND
- All dimensions are in feet.
  - All curve dimensions are arcs.
  - Concrete monuments have been placed at all points marked "M".
  - Lot corners have been marked with 1/2" dia. rods 18 inches in length.
  - Boundaries were established from the recorded Plat of "FOREST LAKE-RIVER BLUFFS" in Sec. 19, T20N, R4E, and the East 1/2 of Sec. 24, T20N, R3E, Moftatt Twp., Arenac County, Michigan.

Pike Engineering Co.  
405 South Leroy St.  
Fenton, Mich. 48430