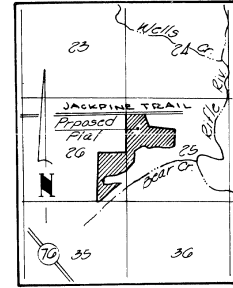




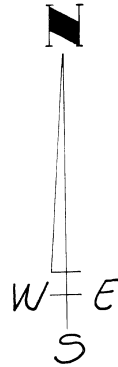
# FOREST GROVE



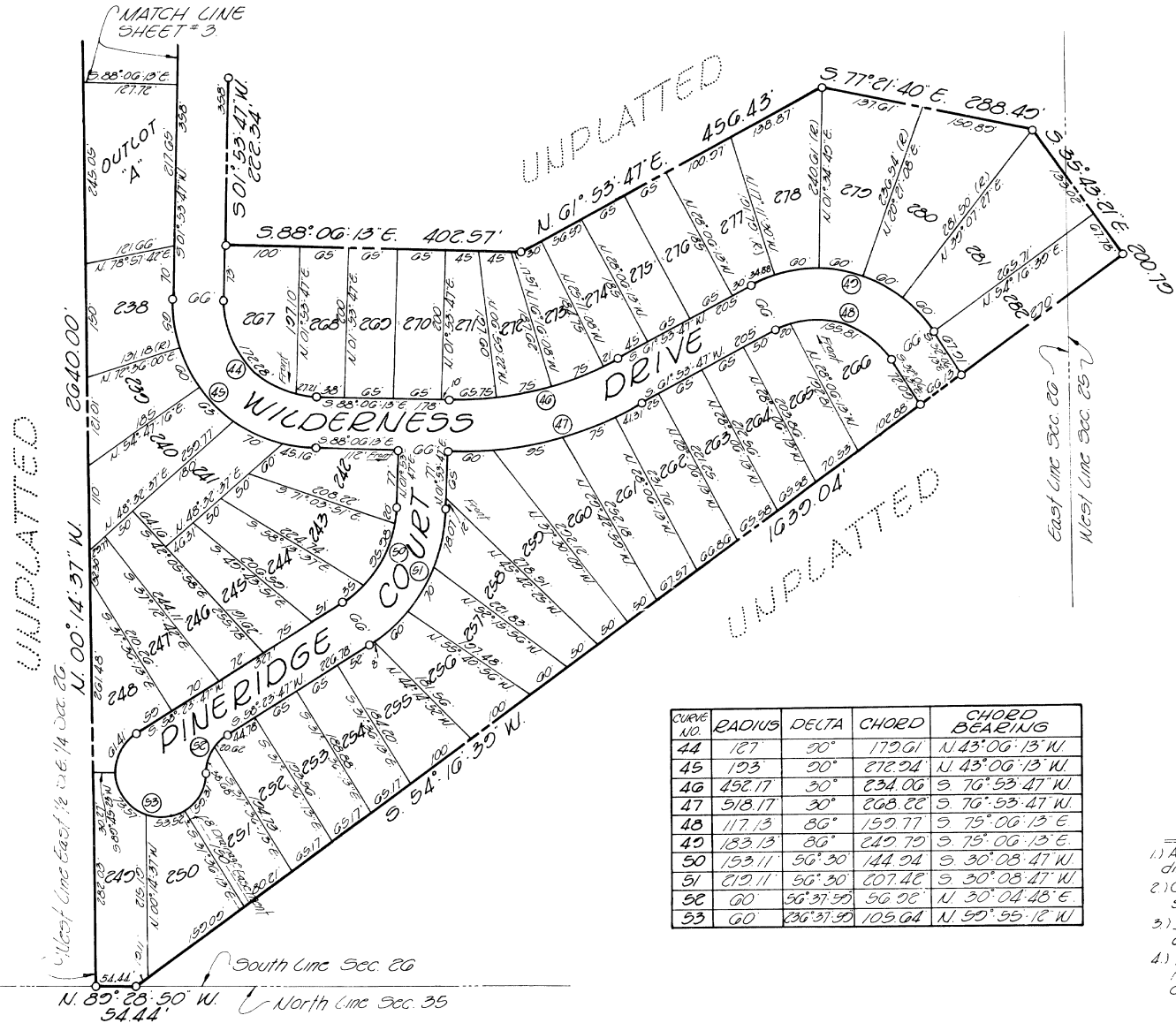
BEING A SUBDIVISION PART OF THE WEST HALF OF SECTION 25 AND THE EAST HALF OF THE SOUTHEAST QUARTER OF SECTION 26, TOWN 60 NORTH, RANGE 3 EAST, MOFFATT TOWNSHIP, ARENAC COUNTY, MICHIGAN.



LOCATION SKETCH



SCALE 1" = 100'



CURVE NO.	RADIUS	DELTA	CHORD	CHORD BEARING
44	127	90°	179.61	N 43° 06' 13" W
45	123	90°	272.94	N 43° 06' 13" W
46	452.17	30°	234.06	S 76° 53' 47" W
47	518.17	30°	268.28	S 76° 53' 47" W
48	117.13	86°	159.77	S 75° 06' 13" E
49	183.13	86°	249.79	S 75° 06' 13" E
50	193.11	56° 30'	144.94	S 30° 08' 47" W
51	219.11	56° 30'	207.48	S 30° 08' 47" W
52	60	56° 37' 50"	56.28	N 30° 04' 48" E
53	60	26° 37' 50"	109.64	N 59° 55' 12" W

- LEGEND**
- 1) All dimensions are in feet. All curvilinear dimensions shown are measured along arc.
  - 2) Concrete monuments are set at all points shown thus: ○
  - 3) Iron Pipes 1/2" and larger and 1 1/2" and longer are set at all other lot corners.
  - 4) The bearings shown on this plat are in relation to the true meridian by celestial observation.