

# "FOREST LAKE HIGHLANDS"

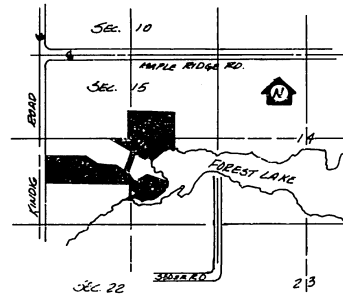
SHEET 1 of 4

PART OF THE N 1/2 OF THE SW 1/4 AND PART OF THE W 1/2 OF THE E 1/2 OF SEC. 15 T20N, R3E.

MOFFATT TOWNSHIP, ARENAC COUNTY, MICHIGAN

### LEGEND

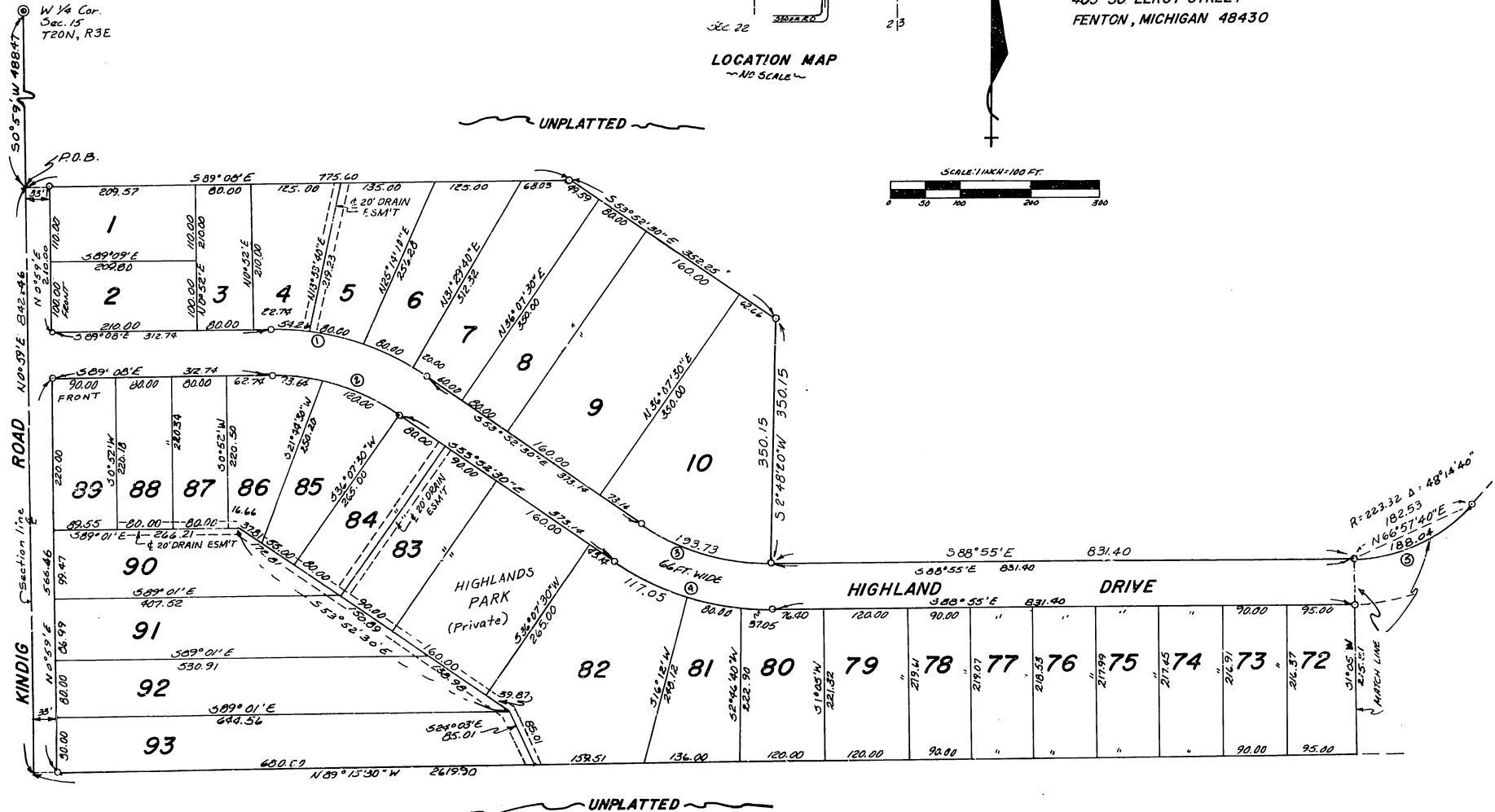
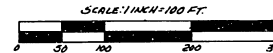
1. ALL DIMENSIONS ARE IN FEET.
2. ALL CURVE DIMENSIONS ARE ARCS.
3. CONCRETE MONUMENTS HAVE BEEN PLACED AT ALL POINTS MARKED "o".
4. LOT CORNERS HAVE BEEN MARKED WITH 1/2" DIA. RODS 18" IN LENGTH.
5. BEARINGS WERE ESTABLISHED FROM THE RECORDED PLAT OF FOREST LAKE CRANE BAY LIBER 4 PAGE 15 E 18.
6. WATERFRONT LOTS EXTEND TO THE WATER'S EDGE.



LOCATION MAP  
NO SCALE

CURVE DATA				
CURVE NO.	#1	#2	#3	#5
RADIUS	300.68	314.65	316.74	362.74
CENTRAL ANGLE	55°15'31"	55°15'36"	55°02'36"	55°04'56"
CHORD BEARING	S71°30'18"E	S71°30'18"E	S71°31'45"E	S71°31'45"E
CHORD LENGTH	180.00	180.00	180.72	180.72

PIKE ENGINEERING CO.  
405 SO LEROY STREET  
FENTON, MICHIGAN 48430



52680