

Examined and Approved

Register's Office
Hammell Beach Shores
Plat of Hammell Beach Shores
was recorded on this 8th day of March A.D. 1939 at 9:22 O'clock
P.M. in Liber I of Water
on Page 45

HAMMELL BEACH SHORES

A SUBDIVISION OF GOVERNMENT LOT 1
SECTION 36 T20N R7E WHITNEY TOWNSHIP
ARENAC COUNTY, MICHIGAN

G. T. Hartman
G. T. HARTMAN, Deputy Auditor General
FILED IN AUDITOR GENERAL'S DEPT.
3/21/39
G. T. Hartman
G. T. HARTMAN, DEPUTY AUDITOR GENERAL

I HEREBY CERTIFY THAT THIS COPY IS
A TRUE COPY OF THE MAP OR PLAT
FORWARDED THE REGISTER OF DEEDS
FOR RECORDING.
3/16/39
G. T. Hartman
G. T. HARTMAN, DEPUTY AUDITOR GENERAL

DEDICATION

KNOW ALL MEN BY THESE PRESENTS, That I Robert G. Houghton, a single man, as proprietor, have caused the land embraced in the annexed plat to be surveyed, laid out and platted, to be known as HAMMELL BEACH SHORES a subdivision of Government Lot 1 section 36 T20N R7E Whitney Township Arenac County, Michigan and that the roads, as shown on said plat are hereby dedicated to the use of the public and streets

Signed and Sealed in Presence of

Robert G. Houghton (L.S.)
ROBERT G. HOUGHTON.
Notary Public Wayne County, Michigan.

STATE OF MICHIGAN
County of Wayne ss.

On this 19th day of December 1938 before me, a Notary Public in and for said county, personally came the above named Robert G. Houghton, a single man, known to me to be the person who executed the above dedication, and acknowledged the same to be his free act and deed.

My Commission expires January 9, 1939
Notary Public Wayne County, Michigan.

DESCRIPTION

The land embraced in the annexed plat of HAMMELL BEACH SHORES a subdivision of Government Lot 1 section 36 T20N R7E Whitney Township Arenac County, Michigan is described as follows: From the West 1/8 corner common to sections 25 and 36 T20N R7E Whitney Township Arenac County, Michigan, as the point of beginning, thence S 85° 45' E 1933.0 feet, thence S 31° 57' 32" W 849.4 feet, thence S 42° 54' 08" W 746.18 feet, thence E 85° 51' 40" W 1017.37 feet, thence N 3° 10' 46" E 1321.1 feet to point of beginning. Excluding therefrom a strip of land 150 feet wide for US 23 Highway Right of way running through said plat.

SURVEYOR'S CERTIFICATE

I hereby certify that the plat hereon delineated is a correct one and that permanent metal monuments of not less than one inch in diameter and fifteen inches in length set in a concrete base at least four inches in diameter and forty-eight inches in depth have been placed at points marked thus © as thereon shown at all angles in the boundaries of the land platted and at the intersections of roads with the boundaries of the plat as shown on said plat.

R. J. Cooke
R. J. Cooke Registered Surveyor

CERTIFICATE OF MUNICIPAL APPROVAL

This plat was approved by the Township Board of the Township of Whitney at a meeting held December 11th 1938

Harry Pendred
HARRY PENDRED, Clerk

CERTIFICATE OF APPROVAL BY COUNTY BOARD

This plat was approved on the 8th day of January 1939

WIDTH AND LOCATION OF
STATE TRUNK LINE AND
FEDERAL AID ROADS O. K.

Charles E. Lepton
Charles E. Lepton
State Highway Commissioner

Harry E. Converse
Harry E. Converse
Judge of Probate

Asa Whiting
Asa Whiting
County Clerk

Charles E. Lepton
Charles E. Lepton
County Treasurer

CERTIFICATE AS TO FEDERAL AIDED ROADS

We hereby certify that said plat appears to include land located on a federal aided road.

Harry E. Converse
Harry E. Converse
State Highway Commissioner
Asa Whiting
Asa Whiting
County Clerk
Charles E. Lepton
Charles E. Lepton
County Treasurer

Examined and approved

State Highway Commissioner

CERTIFICATE AS TO COUNTY BOARD

We hereby certify that said plat appears to include land located on a county road.

Harry E. Converse
Harry E. Converse
State Highway Commissioner
Asa Whiting
Asa Whiting
County Clerk
Charles E. Lepton
Charles E. Lepton
County Treasurer

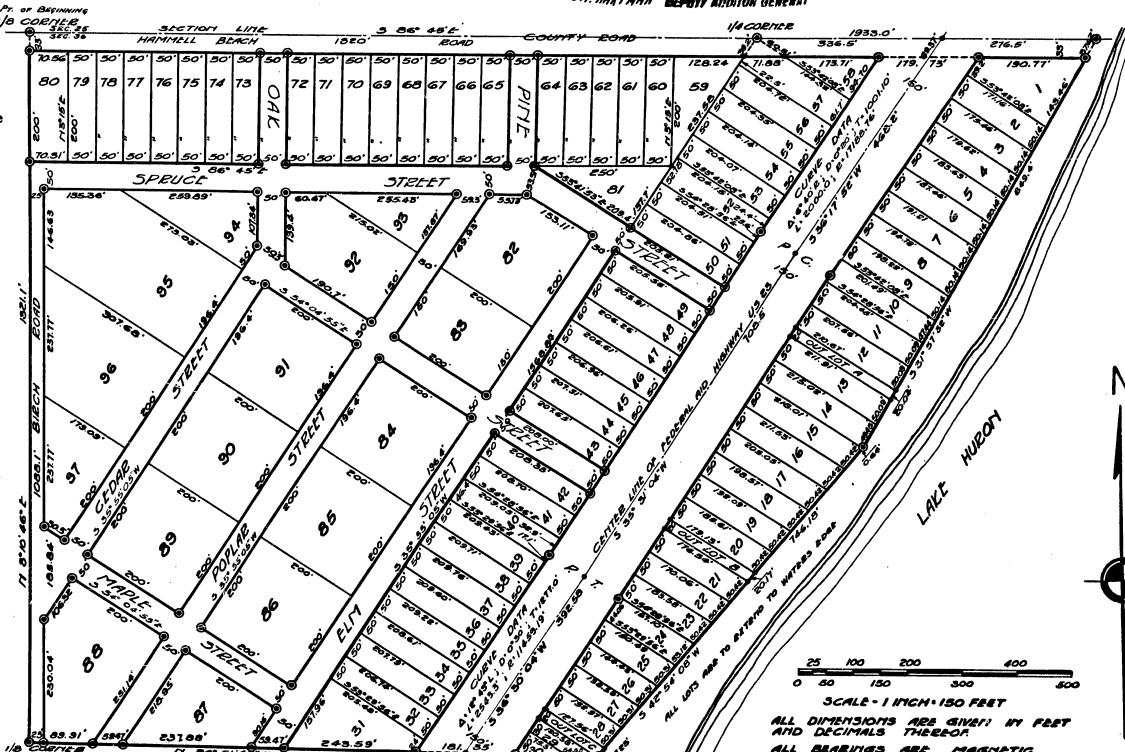
Examined and approved

Earl H. Porter
Earl H. Porter
County Road Commissioner
C. A. Warren
C. A. WARREN, County Road Commissioner

COUNTY TREASURER'S CERTIFICATE RELATING TO TAXES

Office of County Treasurer, Arenac County.
I hereby certify, that there are no tax liens or titles held by the State on the lands described below, and that there are no tax liens or titles held by individuals on said lands, for the five years preceding the 22nd day of December 1938 and that the taxes for said period of five years are paid, as shown by the records of this office. This certificate does not apply to taxes, if any, now in process of collection by township collecting officers. The land embraced in the annexed plat of HAMMELL BEACH SHORES a subdivision of Government Lot 1 section 36 T20N R7E Whitney Township Arenac County, Michigan is described as follows: From the West 1/8 corner common to sections 25 and 36 T20N R7E Whitney Township Arenac County, Michigan, as the point of beginning, thence S 85° 45' E 1933.0 feet, thence S 31° 57' 32" W 849.4 feet, thence S 42° 54' 08" W 746.18 feet, thence N 3° 10' 46" E 1321.1 feet to point of beginning. Excluding therefrom a strip of land 150 feet wide for US 23 Highway Right of way running through said plat.

Charles E. Lepton
Charles E. Lepton
County Treasurer



COPY

27212