

PLAT OF TIMBER ISLAND

PART OF LOT 4, SECTION 10, T10N, R5E

STANDISH TOWNSHIP

ARENAC COUNTY

MICHIGAN.

Know All Men By These Presents

That I Ruth A. Lentz, as proprietor have caused the land embraced in the annexed plat to be surveyed, laid out and platted, to be known as "Plat of Timber Island, Standish Township, Arenac County, Michigan, and that the street as shown thereon is dedicated to the use of the Lot Owners.

Signed and Sealed in presence of

Ruth A. Lentz
Ruth A. Lentz
Notary Public
State of Michigan
County of Arenac ss.

On this 6 day of August, A.D. 1940, before me, J. M. Hornsby, Notary Public in and for said county, appeared Ruth A. Lentz to me known to be the person who executed the foregoing dedication and who acknowledged the same to be her free act and deed.

J. M. Hornsby
Notary Public Arenac County, Mich.
My Commission expires 1/14/41

Description of Land Platted

The land embraced in the annexed plat of the "Plat of Timber Island" Standish Township, Arenac County, Michigan, is described as follows: That part of lot 4, Section 10, Township 10 North, Range 5 East, Michigan Meridian, commencing at a point 1787 feet east and 33 feet north of the section corner common to sections 9, 10, 15 and 16, Town and Range aforesaid, running thence north 16° 45' east 396 feet; thence north 10° 40' east 389 feet; thence north 49° 20' west 170 feet; thence south 100° west 425 feet; thence south 16° 45' west 465 feet; thence south 80° east 10 feet; thence south 87° east 50 feet to place of beginning.

Surveyor's Certificate

I hereby certify that the plat hereon delineated is a correct one and that permanent metal monuments of not less than one inch in diameter and fifteen inches in length set in a concrete base at least four inches in diameter and forty-eight inches in depth have been placed at points marked thus O as thereon shown at all angles in the boundaries of the land platted, at all the intersections of streets, intersections of alleys, or of streets and alleys, and at the intersections of streets and alleys with boundaries of the plat as shown on said plat.

J. E. Linton
Registered Surveyor

County Treasurer's Certificate Relating To Taxes

Office of County Treasurer, Arenac County.

I hereby certify that there are no tax liens or titles held by the State on the lands described below and that there are no tax liens or titles held by individuals on said lands for five years preceding the 6th day of August, A.D. 1940 and the taxes for said period of five years are paid as shown by the records of this office. This certificate does not apply to taxes if any now in process of collection by Township, City or Village collecting officers.

Description of lands of which the plat of "Plat of Timber Island" Standish Township, Arenac County, Michigan forms a part is, Lot 4, Section 10, Town 10 North, Range 5 East, Michigan Meridian.

Claude E. Upton
County Treasurer

Certificate of Municipal Approval

This plat was approved by the Township Board of Standish Township at a meeting held March 21, 1940.

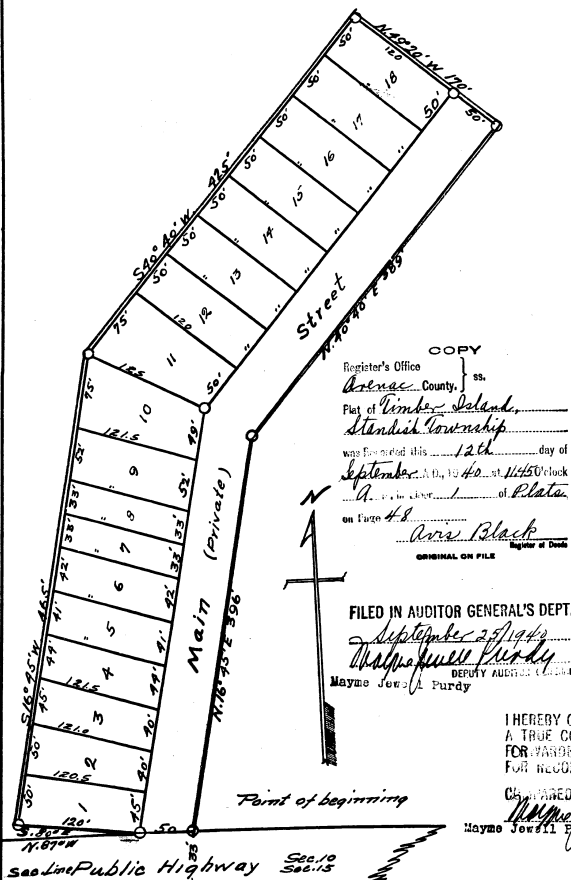
Nelson Rashott
Township Clerk

Certificate of Approval By County Board

This plat was approved by the Arenac County Plat Board this 30th day of August, 1940.

Harry E. Converse Judge of Probate
Asa Whiting County Clerk
Claude E. Upton County Treasurer

Scale - 1/4 in. = 100 ft.



Register's Office
Arenac County, ss.
Plat of Timber Island,
Standish Township
was recorded this 12th day of
September, A.D. 1940, at 11:45 o'clock
A.M. in the presence of the
on this 4th day of August, 1940.

FILED IN AUDITOR GENERAL'S DEPT.

September 25, 1940
Mayne Jewell Purdy
DEPUTY AUDITOR GENERAL

Examined and Approved

September 11, 1940
Mayne Jewell Purdy
DEPUTY AUDITOR GENERAL

I HEREBY CERTIFY THAT THIS COPY IS A TRUE COPY OF THE MAP OR PLAT FOR RECORDED IN THE REGISTER OF DEEDS FOR RECORDING.

Checked
Mayne Jewell Purdy
DEPUTY AUDITOR GENERAL

This plat does not include any land located on or adjacent to a Federal Aid or State Trunk Line Highway.
(August 30, 1940)
County Plat Board
Claude E. Upton

This plat appears to include lands located adjacent to a County Road, but the location of any Street in said plat does not interfere with any present or future development or maintenance of said County Road and is hereby approved by the Arenac County Road Commission.
Approved: August 29, 1940
Walter J. Gorman
County Road Commission

This plat appears to include lands located adjacent to a County drain, but the location of said plat does not interfere with the use or maintenance of said drain and is hereby approved by the Arenac County Drain Commission.
Approved: August 29, 1940
Walter J. Gorman
County Drain Commission

