

J. WEED
PINE GROVE SUBDIVISION
 A SUBDIVISION OF PART OF SW1/4 OF SW1/4 SECTION 11 T19N R7E
 SIMS TOWNSHIP ARENAC COUNTY, MICHIGAN

DEDICATION

KNOW ALL MEN BY THESE PRESENTS, That we John A. Weed as proprietor, and Alice Weed his wife, have censed the land embraced in the annexed plat to be surveyed, laid out and platted, to be known as J. Weed PINE GROVE SUBDIVISION a subdivision of part of SW1/4 of SW1/4 section 11 T19N R7E Sims Township Arenac County, Michigan and that the streets as shown on said plat are private to the use of the property owners in said plat.

Signed and Sealed in Presence of

R. J. Cooke
 Eleanor I. Cooke

John A. Weed (L.S.)
 John A. Weed
Alice Weed (L.S.)
 Alice Weed

STATE OF MICHIGAN,
 County of Iosco ss.

On this 22nd day of December 1941 before me, a Notary Public in and for said county, personally came the above named John A. Weed and Alice Weed his wife, known to me to be the persons who executed the above dedication, and acknowledged the same to be their free act and deed.

Reynold J. Cooke

Notary Public Iosco County, Michigan.
 My Commission expires June 26, 1943.

DESCRIPTION OF LAND PLATTED

The land embraced in the annexed plat of J. Weed PINE GROVE SUBDIVISION a subdivision of part of SW1/4 of SW1/4 section 11 T19N R7E Sims Township Arenac County, Michigan is described as follows: From the section corner common to sections 10, 11, 14 and 15 T19N R7E Sims Township Arenac County, Michigan thence S 87°54' 43" E 33 feet, thence N 3°03' 06" E 33 feet to point of beginning. Thence N 3°03' 06" E 1285.47 feet, thence S 87°00' E 200 feet, thence S 3°03' 06" W 1083.25 feet, thence S 87°54' 43" E 652.6 feet, thence E 2°05' 12" E 324.1 feet, thence S 87°54' 43" E 430.13 feet, thence S 2°12' 54" W 524.1 feet, thence N 87°54' 43" W 1285 feet to point of beginning.

CERTIFICATE OF APPROVAL BY COUNTY BOARD

This plat was approved on the 2ND day of February 1942.

Avis Black Register of Deeds.
Geo. Whiting County Clerk.
J. E. Upton County Treasurer.

CERTIFICATE OF APPROVAL BY BOARD OF COUNTY ROAD COMMISSIONERS

This plat has been examined and was approved on the 2nd day of January 1942 by the Arenac County Board of Road Commissioners.

Earl H. Foster Chairman.
Carl Warren Member.
James Daniels Member.

COUNTY TREASURER'S CERTIFICATE RELATING TO TAXES

Office of County Treasurer, Arenac County.
 I hereby certify that there are no tax liens or titles held by the State on the lands described hereon, and that there are no tax liens or titles held by individuals on said lands, for the five years preceding the 30th day of December 1941 and that the taxes for said period of five years are paid, as shown by the records of this office.
 This certificate does not apply to taxes, if any, now in process of collection by Township collecting officers.

Claude E. Upton County Treasurer.

SURVEYOR'S CERTIFICATE

I hereby certify that the plat hereon delineated is a correct one and that permanent metal monuments consisting of bars not less than one-half inch in diameter and 48 inches in length encased in a concrete cylinder at least 4 inches in diameter and 48 inches in depth have been placed at points marked thus © as thereon shown at all angles in the boundaries of the land platted, at all the intersections of streets, and at the intersections of streets with the boundaries of the plat as shown on said plat.

R. J. Cooke Registered Land Surveyor.
 East Tawas, Michigan.

CERTIFICATE OF MUNICIPAL APPROVAL

This plat was approved by the Township Board of the Township of Sims at a meeting held December 21, 1941.

Philip Patterson Township Clerk.

CERTIFICATE AS TO COUNTY ROADS

We hereby certify that said plat appears to include land located on a county road.

Avis Black
Geo. Whiting Ass. Whiting.
J. E. Upton Arenac County Plat Board.
 Examined and approved January 2nd, 1942.
Earl H. Foster
Carl Warren
James Daniels Arenac County Road Commission.

COPY

Register's Office
 Arenac County, MI
 Plat of *J. Weed Pine Grove Subdivision*, Sims Township
 was Recorded this 6th day of February, A.D., 1942, at 2:00 o'clock A. M. in Liber 2 of Plats on Page 1
Avis Black Register of Deeds
 ORIGINAL ON FILE

I HEREBY CERTIFY THAT THIS COPY IS A TRUE COPY OF THE RECORD PLAT FORWARDED TO THE REGISTER OF DEEDS FOR RECORDING.

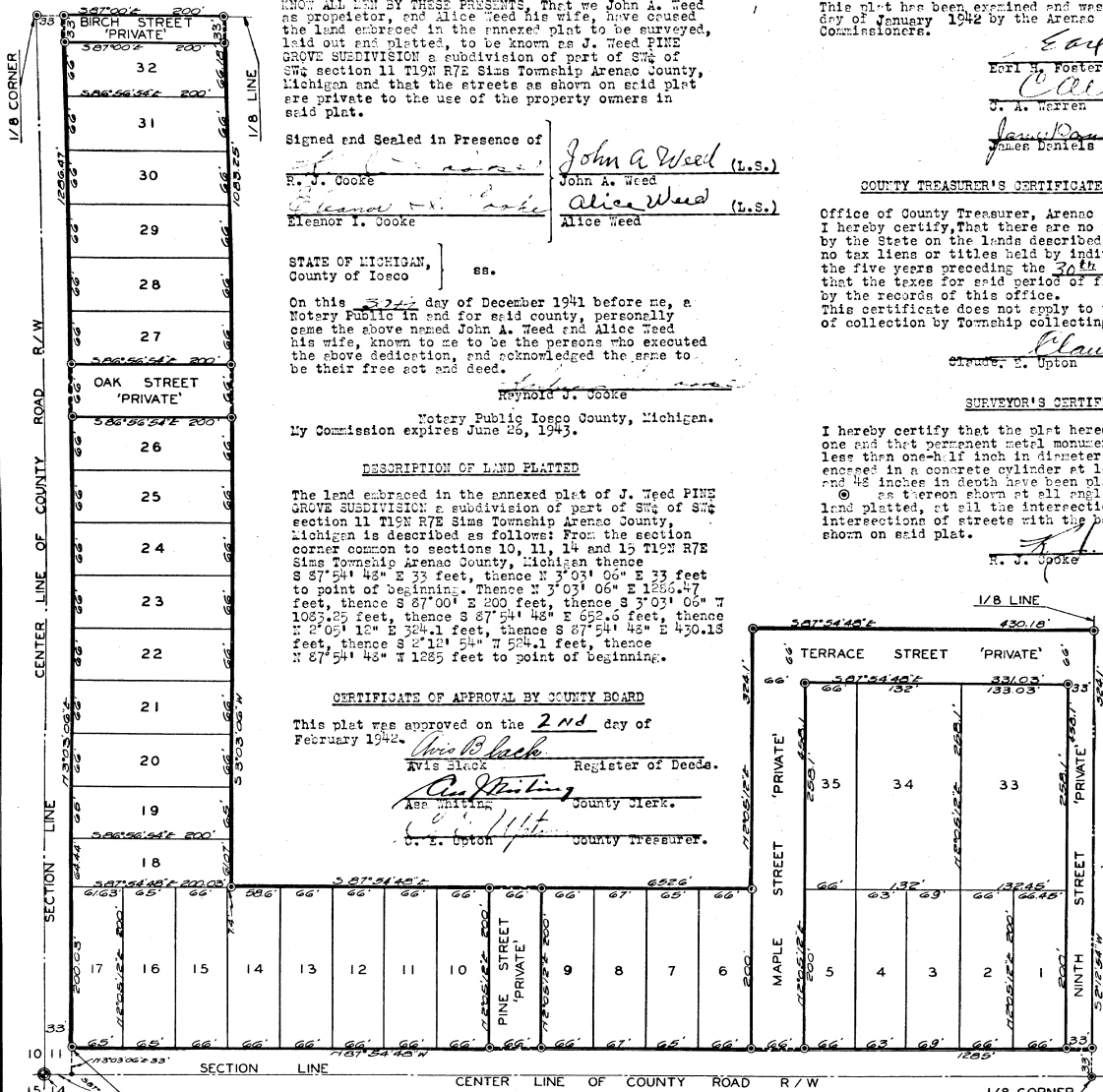
COMPARED February 4, 1942
Mayme Jewell Purdy DEPUTY AUDITOR GENERAL

Examined and Approved

Mayme Jewell Purdy
 Mayme Jewell Purdy Deputy Auditor General

FILED IN AUDITOR GENERAL'S DEPT.

Mayme Jewell Purdy
 Mayme Jewell Purdy DEPUTY AUDITOR GENERAL



All dimensions are given in feet and decimals thereof.
 All bearings are magnetic.

SCALE - 1 Inch = 100 Feet