

COPY

Notary Public for
 Ann Arbor, Michigan
 My Commission Expires July 12, 1947
 I, Avis Black
 Register of Deeds

NOTARY PUBLIC THAT IN 5 CORNERS
 A TRUE COPY OF THE MAP OF FIRST
 ADDITION TO BADOUR'S RIVERSIDE
 SUBDIVISION

Examined and Approved

CONTAINED February 6, 1945
Maxine Jewell Purdy
 DEPUTY AUDITOR GENERAL
 Maxine Jewell Purdy

February 6, 1945
Maxine Jewell Purdy
 DEPUTY AUDITOR GENERAL
 Maxine Jewell Purdy

FIRST ADDITION
 TO
 BADOUR'S

RIVERSIDE SUBDIVISION

A SUBDIVISION OF PART OF GOVERNMENT LOTS 3 AND 4 SECTION 19 T19N R7E
 SIMS TOWNSHIP ARENAC COUNTY, MICHIGAN

DEDICATION

KNOW ALL MEN BY THESE PRESENTS, That we Albert Badour Jr. a single man and Gus Badour an attorney and Anna Badour wife of said Gus Badour, have caused the land embraced in the annexed plat to be surveyed, laid out and platted to be known as First Addition to Badour's Riverside Subdivision a subdivision of part of Government Lots 3 and 4 section 19 T19N R7E Sims Township Arenac County, Michigan.

Signed and Sealed in Presence of

R. J. Cooke

Eleanor I. Cooke

Albert Badour Jr. (U.S.)

Gus Badour (U.S.)

Anna Badour (U.S.)

STATE OF MICHIGAN,
 County of Iosco } ss.

On this 2nd day of February 1945 before me, a Notary Public in and for said county, personally came the above named Albert Badour Jr. a single man and Gus Badour and Anna Badour wife of said Gus Badour, known to me to be the persons who executed the above dedication, and acknowledged the same to be their free act and deed.

R. J. Cooke

Notary Public Iosco County, Michigan.

My Commission expires July 12, 1947.

CERTIFICATE OF MUNICIPAL APPROVAL

This plat was approved by the Township Board of the Township of Sims at a meeting held February 2, 1945.

Jacob Dittenber
 Jacob Dittenber

CERTIFICATE OF APPROVAL BY BOARD OF COUNTY ROAD COMMISSIONERS

This plat has been examined and was approved on the 2nd day of February 1945 by the Arenac County Board of Road Commissioners.

Earl H. Foster Chairman.

James Danich Member.

G. B. Koat Member.

CERTIFICATE OF APPROVAL BY COUNTY BOARD

This plat was approved on the 2nd day of February, 1945

Avis Black Register of Deeds.

Lea Whiting County Clerk.

Claude E. Upton County Treasurer.

COUNTY TREASURER'S CERTIFICATE RELATING TO TAXES

Office of County Treasurer, Arenac County.
 I hereby certify, That there are no tax liens or titles held by the State on the lands described hereon, and that there are no tax liens or titles held by individuals on said lands, for the five years preceding the 2nd day of February 1945 and that the taxes for said period of five years are paid, as shown by the records of this office.
 This certificate does not apply to taxes, if any, now in process of collection by Township collecting officers.

Claude E. Upton Arenac County Treasurer.

DESCRIPTION OF LAND PLATTED

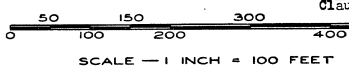
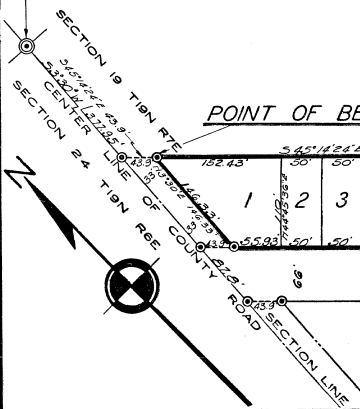
The land embraced in the annexed plat of First Addition to Badour's RIVERSIDE SUBDIVISION a subdivision of part of Government Lots 3 and 4 section 19 T19N R7E Sims Township Arenac County, Michigan is described as follows: From the 1 corner common to sections 19 T19N R7E and section 24 T19N R6E thence S 3°30' W 377.95 feet, thence S 45°14' 24" E 43.2 feet to Point of Beginning, Thence S 45°14' 24" E 1502.43 feet, thence N 44°45' 36" E 44.52 feet, thence S 45°14' 24" E 344.4 feet, thence S 38°20' 48" E 366.77 feet, thence S 57°59' 12" W 155.47 feet, thence N 38°20' 48" W 340.31 feet, thence N 45°14' 24" W 1541.02 feet, thence N 3°30' E 146.33 feet to Point of Beginning.

SURVEYOR'S CERTIFICATE

I hereby certify that the plat hereon delineated is a correct one and that permanent metal monuments consisting of bars not less than one-half inch in diameter and 48 inches in length encased in a concrete cylinder at least 4 inches in diameter and 48 inches in depth have been placed at points marked thus \odot as thereon shown at all angles in the boundaries of the land platted as shown on said plat.

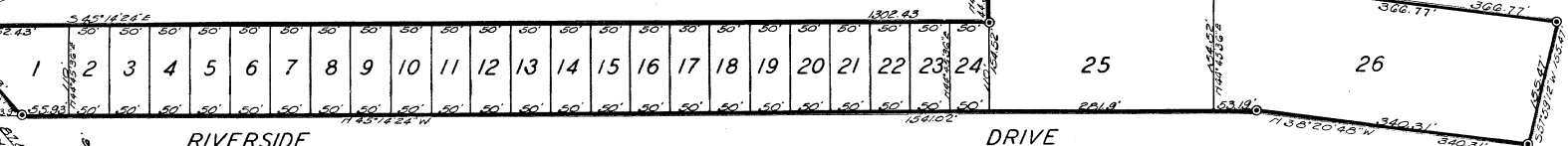
R. J. Cooke
 Registered Land Surveyor.
 East Tawas, Michigan.

1/4 CORNER



All dimensions are given in feet and decimals thereof.
 All bearings are magnetic.

POINT OF BEGINNING



(BADOUR'S RIVERSIDE SUBDIVISION)

291-9