

# MORGAN'S ADDITION TO THE CITY OF AU GRES

A SUBDIVISION OF PART OF N 1/2 OF NW 1/4 OF SW 1/4 OF SECTION 13 T19N R6E

AU GRES TOWNSHIP ARENAC COUNTY, MICHIGAN.

### DEDICATION

KNOW ALL MEN BY THESE PRESENTS, That we Norman Morgan as Proprietor, and Helen Morgan his wife, have caused the land embraced in the annexed plat to be surveyed, laid out and platted, to be known as MORGAN'S ADDITION to the City of Au Gres a subdivision of part of N 1/2 of NW 1/4 of SW 1/4 of section 13 T19N R6E Au Gres Township Arenac County, Michigan.

Signed and Sealed in Presence of

R. J. Cooke Norman Morgan (U.S.)  
Eleanor I. Cooke Helen Morgan (U.S.)

STATE OF MICHIGAN,  
County of Iosco ss.

On this Sixteenth day of April 1945 before me, a Notary Public in and for said county, personally came the above named Norman Morgan and Helen Morgan his wife, known to me to be the persons who executed the above dedication, and acknowledged the same to be their free act and deed.

R. J. Cooke  
Notary Public Iosco County, Michigan.

My Commission expires July 12, 1947.

### DESCRIPTION OF LAND PLATTED

The land embraced in the annexed plat of MORGAN'S ADDITION to the City of Au Gres a subdivision of part of N 1/2 of NW 1/4 of SW 1/4 of section 13 T19N R6E Au Gres Township Arenac County, Michigan is described as follows: From the corner common to sections 13 and 14 T19N R6E Au Gres Township Arenac County, Michigan thence S 0° 04' 12" E 71.26 feet, thence N 89° 44' 56" E 33 feet to Point of Beginning, thence along the arc with degree of curve 6° 12' 54" (Chord definition) with long chord N 85° 18' 24" E 376.11 feet, thence N 89° 55' 58" E 311.7 feet, thence S 0° 24' 06" W 270.03 feet, thence S 88° 54' W 1305.64 feet, thence N 0° 04' 12" W 272.68 feet to Point of Beginning.

### COUNTY TREASURER'S CERTIFICATE RELATING TO TAXES

Office of County Treasurer, Arenac County.  
I hereby certify, That there are no tax liens or titles held by the State on the lands described hereon, and that there are no tax liens or titles held by individuals on said lands, for the five years preceding the 14th day of April 1945 and that the taxes for said period of five years are paid as shown by the records of this office.  
This certificate does not apply to taxes, if any, now in process of collection by City collecting officers.

Claude E. Upton  
Claude E. Upton Arenac County Treasurer.

### SURVEYOR'S CERTIFICATE

I hereby certify that the plat hereon delineated is a correct one and that permanent metal monuments consisting of bars not less than one-half inch in diameter and 48 inches in length encased in a concrete cylinder at least 4 inches in diameter and 48 inches in depth have been placed at points marked thus  $\odot$  as thereon shown at all angles in the boundaries of the land platted as shown on said plat.

R. J. Cooke  
Registered Land Surveyor,  
East Tawas, Michigan.

### CERTIFICATE OF MUNICIPAL APPROVAL

This plat was approved by the Common Council of the City of Au Gres at a meeting held April 24, 1945.

Hildred L. Beach  
Hildred L. Beach City Clerk.

### CERTIFICATE OF APPROVAL BY COUNTY BOARD

This plat was approved on the 27th day of April 1945.

Avis Black Register of Deeds.  
Alex Whiting County Clerk.  
Claude E. Upton County Treasurer.



COPY  
Register's Office  
Arenac County, ss.  
of Morgan's Addition  
City of Au Gres  
was recorded the 24th day of  
May A.D. 1945 at 10:00 o'clock  
A. M. in Lib. 2 Plate  
Avis Black  
ORIGINAL ON FILE

I HEREBY CERTIFY THAT THIS COPY IS  
A TRUE COPY OF THE MAP OR PLAT  
FOR RECORDED IN THE REGISTER OF DEEDS  
FOR MICHIGAN.

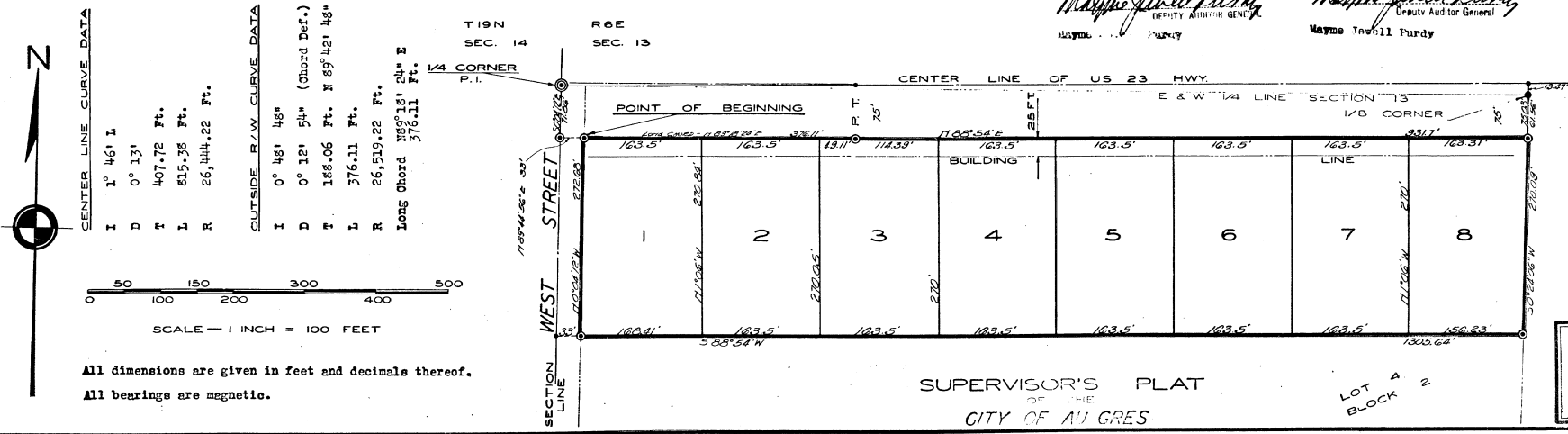
COMPARED May 17, 1945  
Wayne Jewell Purdy  
DEPUTY AUDITOR GENERAL

FILED IN AUDITOR GENERAL'S DEPT.

Wayne Jewell Purdy  
DEPUTY AUDITOR GENERAL

Examined and Approved

Wayne Jewell Purdy  
DEPUTY AUDITOR GENERAL



All dimensions are given in feet and decimals thereof.  
All bearings are magnetic.

SUPERVISOR'S PLAT  
OF THE  
CITY OF AU GRES

LOT 4  
BLOCK 2

23263