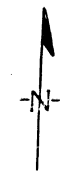


# MAJOR'S SUBDIVISION

EMBRACING A PORTION OF VACATED RIVER STREET IN THE CITY OF STANDISH  
ALSO A PART OF THE W 1/2 OF THE SE 1/4 OF SECTION 2, T18N, R4E,  
CITY OF STANDISH, LINCOLN TOWNSHIP,  
ARENAC COUNTY, MICHIGAN



### DEDICATION

KNOWN ALL MEN BY THESE PRESENTS, THAT WE Edwin Major  
AS RECORDITOR, AND Edwin Major HIS WIFE, HAVE CAUSED  
THE LAND EMBRACED IN THE ANNEXED PLAT TO BE SUBDIVIDED,  
Laid out and platted to be known as MAJOR'S SUBDIVISION  
EMBRACING A PORTION OF VACATED RIVER STREET IN THE CITY OF STANDISH ALSO A PART  
OF THE W 1/2 OF THE SE 1/4 OF SECTION 2, T18N, R4E, CITY OF STANDISH, LINCOLN TOWNSHIP,  
ARENAC COUNTY, MICHIGAN AND THAT THE STREETS AS SHOWN ON SAID PLAT ARE HEREBY  
DEDICATED TO THE USE OF THE PUBLIC.

SIGNED AND SEALED IN THE PRESENCE OF  
Edwin Major (L.S.)  
Edwin Major (L.S.)  
WIFE  
STATE OF MICHIGAN } SS.  
COUNTY OF ARENAC }

ON THIS 10th DAY OF June 1946  
BEFORE ME, A NOTARY PUBLIC IN AND FOR SAID COUNTY, PERSONALLY  
CAME THE ABOVE NAMED Edwin Major AND Edwin Major  
HIS WIFE, KNOWN TO ME TO BE THE PERSONS WHO EXECUTED THE  
ABOVE DEDICATION, AND ACKNOWLEDGED THE SAME TO BE THEIR  
FREE ACT AND DEED.

Edwin Major  
NOTARY PUBLIC  
ARENAC CO., MICH.  
16-12-47

MY COMMISSION EXPIRES

### DESCRIPTION OF LAND PLATTED

THE LAND EMBRACED IN THE ANNEXED PLAT OF MAJOR'S  
SUBDIVISION, EMBRACING A PORTION OF VACATED RIVER STREET  
OF THE PLAT OF THE CITY OF STANDISH, ALSO A PART OF THE W 1/2  
OF THE SE 1/4 OF SECTION 2, T18N, R4E, CITY OF STANDISH,  
LINCOLN TWP, ARENAC COUNTY, MICHIGAN, IS DESCRIBED AS  
FOLLOWS:- FROM THE 1/4 SECTION CORNER COMMON  
TO SECTIONS 2 AND 11, T18N, R4E, THENCE S86°15'E - 693.0 FT,  
THENCE N3°12'E - 112.0 FT, THENCE S86°15'E - 196.0 FT TO A  
POINT OF BEGINNING, RUNNING THENCE S86°15'E - 416.0 FT,  
THENCE N3°12'E - 82.0 FT, THENCE N86°15'W - 416.0 FT, THENCE  
S3°12'W - 82.0 FT TO POINT OF BEGINNING.

### OFFICE OF THE COUNTY TREASURER, ARENAC COUNTY

I HEREBY CERTIFY, THAT THERE ARE NO TAX LIENS OR TITLES  
HELD BY THE STATE ON THE LANDS DESCRIBED HEREON, AND THAT THERE  
ARE NO TAX LIENS OR TITLES HELD BY INDIVIDUALS ON SAID  
LANDS, FOR THE FIVE YEARS PRECEDING 1st DAY OF July  
1946 AND THE TAXES FOR SAID PERIOD OF FIVE YEARS ARE PAID, AS SHOWN BY THE RECORDS OF THIS OFFICE.  
THIS CERTIFICATE DOES NOT APPLY TO TAXES, IF ANY, NOW IN  
PROCESS OF COLLECTION BY CITY COLLECTING OFFICERS.  
Claude E. Phipps  
COUNTY CLERK  
COUNTY TREASURER

### CERTIFICATE OF MUNICIPAL APPROVAL

THIS PLAT WAS APPROVED BY THE COMMON COUNCIL OF THE  
CITY OF STANDISH AT A MEETING HELD June 12, 1946  
S. Graves  
CITY CLERK

### CERTIFICATE OF APPROVAL BY COUNTY BOARD

THIS PLAT WAS APPROVED ON THE 1st DAY OF July  
1946  
Arvis Black  
REGISTER OF DEEDS  
Arvis Black  
COUNTY CLERK  
Claude E. Phipps  
COUNTY TREASURER

### SURVEYORS CERTIFICATE

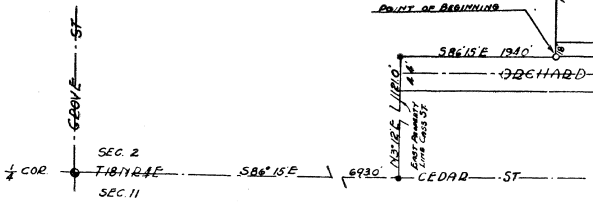
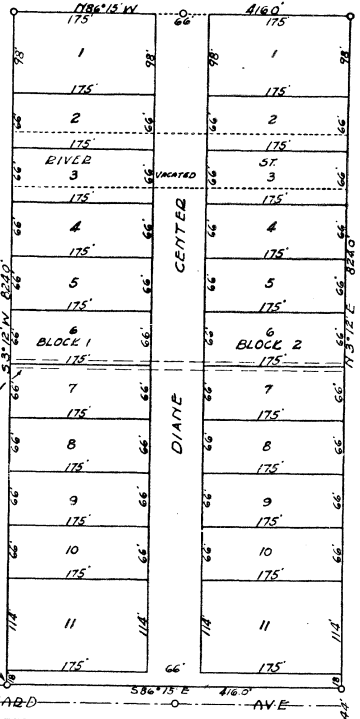
I HEREBY CERTIFY THAT THE PLAT HEREON DELINEATED IS A CORRECT  
ONE AND THAT PERMANENT METAL MONUMENTS CONSISTING OF  
BARS NOT LESS THAN ONE-HALF INCH IN DIAMETER AND 48 INCHES  
IN LENGTH, ENCASED IN A CONCRETE CYLINDER AT LEAST 4 INCHES  
IN DIAMETER AND 48 INCHES IN DEPTH HAVE BEEN PLACED AT POINTS  
MARKED THIS "O" AS THEREON SHOWN AT ALL ANGLES IN THE BOUND-  
ARIES OF THE LAND PLATTED, AT ALL THE INTERSECTIONS OF STREETS,  
AND AT THE INTERSECTION OF STREETS WITH BOUNDARIES OF THE  
PLAT AS SHOWN ON SAID PLAT.

S. E. Lucas Jr.  
REG. LAND SURVEYOR

COPY  
Recorded in City of  
Arenac County  
Part of "Major's Subdivision"  
City of Standish  
Map No. 114  
August 20, 1946 at 10 o'clock  
Attest  
Arvis Black

I HEREBY CERTIFY THAT THIS COPY IS  
A TRUE AND CORRECT COPY OF THE  
ORIGINAL AS FILED IN THE REGISTER OF DEEDS  
FOR RECORD.  
Witnessed  
July 31, 1946  
Arvis Black  
REGISTER OF DEEDS

Examined and Approved  
July 31, 1946  
Walter J. Smith  
FILED IN ALCOHOL GENERAL'S DEPT.  
August 12, 1946  
Walter J. Smith



MICHIGAN BELL TELEPHONE CO.  
TELEPHONE LINE EASEMENT