

FILED IN AUDITOR GENERAL'S DEPT.
Sept 8 1947
MAYNOR JEWELL
DEPUTY AUDITOR GENERAL

RANCH PINES

A SUBDIVISION OF PART OF S1/2 OF SE1/4 OF SW1/4 OF SECTION 25 T20N R7E

DEDICATION

WHITNEY TOWNSHIP ARENAC COUNTY, MICHIGAN.

DESCRIPTION OF LAND PLATTED

KNOW ALL MEN BY THESE PRESENTS, That Sims Ranch Trustees, as Trustees under Sims Ranch Trust Agreement dated November 16, 1934, recorded in the Register's office of Arenac County, Michigan, in Liber 69 of Deeds on Page 501, by Edwin W. Sims, proprietor, have caused the land embraced in the annexed plat to be surveyed, laid out and platted, to be known as RANCH PINES a subdivision of part of S $\frac{1}{2}$ of SE $\frac{1}{4}$ of SW $\frac{1}{4}$ of section 25 T20N R7E Whitney Township Arenac County, Michigan and that the Streets as shown on said plat are private for the use of the property owners in the S $\frac{1}{2}$ of said SW $\frac{1}{4}$ of section 25 T20N R7E.

CERTIFICATE OF APPROVAL BY BOARD OF COUNTY ROAD COMMISSIONERS

This plat has been examined and was approved on the 11th day of August, 1947 by the Arenac County Board of Road Commissioners.

Examined and Approved
Earl H. Foster Chairman.
James Daniels Member.
O. B. Moat Member.

Signed and Sealed in Presence of

SIMS RANCH TRUSTEES

M. F. Brand
Herbert Sims

By Edwin W. Sims (L.S.)
Edwin W. Sims for himself and as attorney in fact for the other Trustees by virtue of letters of attorney, under the hands and seals of the other Trustees dated March 3, 1941, and recorded in the office of Recorder of Deeds of Arenac County, Michigan, in Liber 70 of Deeds on Page 589.

CERTIFICATE OF APPROVAL BY COUNTY BOARD

This plat was approved on the 15th day of August, 1947.

Avis Black Register of Deeds.
Asa Whiting County Clerk.
Claude E. Upton County Treasurer.

COUNTY TREASURER'S CERTIFICATE RELATING TO TAXES

Office of County Treasurer, Arenac County. I hereby certify that there are no tax liens or titles held by the State on the lands described hereon, and that there are no tax liens or titles held by individuals on said lands for the five years preceding the 27th day of July, 1947 and that the taxes for said period of five years are paid, as shown by the records of this office. This certificate does not apply to taxes, if any, now in process of collection by Township collecting officers.

Claude E. Upton County Treasurer.

STATE OF MICHIGAN, County of Arenac ss.

On this 26th day of July, 1947 before me, a Notary Public in and for said county, personally came the above named Edwin W. Sims, to me known to be the person who executed the above dedication in behalf of SIMS RANCH TRUSTEES, and acknowledged that he executed the same as the free act and deed of himself and of said Sims Ranch Trustees.

Herbert Sims

Notary Public Arenac County, Michigan.

My Commission expires January 5, 1950.

I HEREBY CERTIFY THAT THIS COPY IS A TRUE COPY OF THE MAP OR PLAT FORWARDED THE REGISTER OF DEEDS FOR RECORDING.

COMPARED Aug 22, 1947
MAYNOR JEWELL
DEPUTY AUDITOR GENERAL

CERTIFICATE OF MUNICIPAL APPROVAL

This plat was approved by the Township Board of the Township of Whitney at a meeting held July 25, 1947.

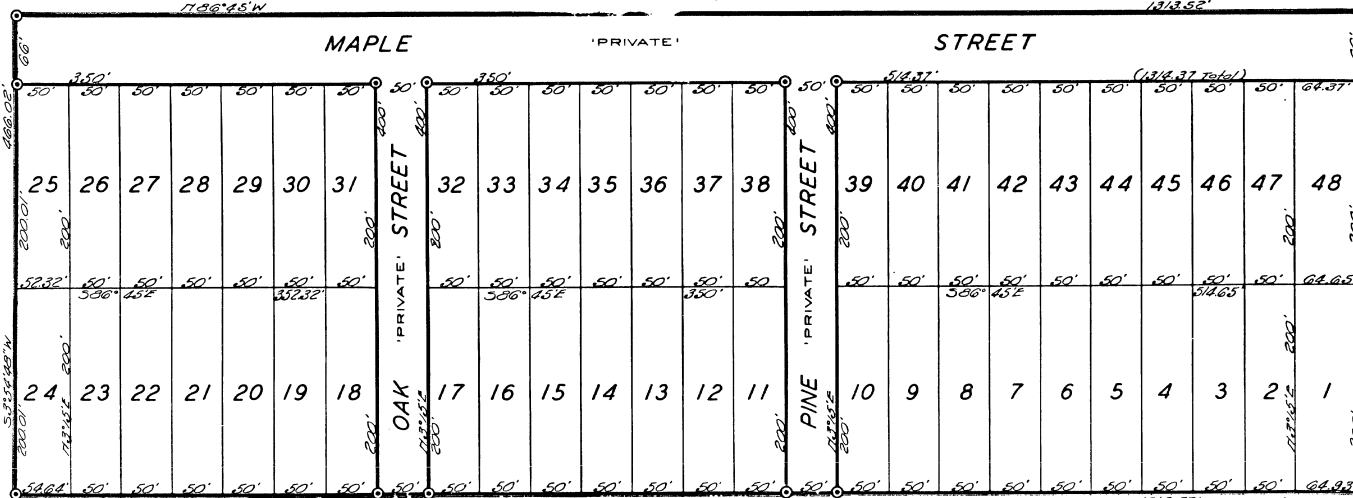
Paul Edmonds Township Clerk.

COPY
Claude E. Upton
"Ranch Pines"
Whitney Township
August 27 day of
A.D. 1947 at 10 o'clock
in Liber 2 of Plats
Page 23
Avis Black
ORIGINAL ON FILE

SURVEYOR'S CERTIFICATE

I hereby certify that the plat hereon delineated is a correct one and that permanent metal monuments consisting of bars not less than one-half inch in diameter and 45 inches in length encased in a concrete cylinder at least 4 inches in diameter and 48 inches in depth have been set at all angles in the boundaries of the land platted, at all the intersections of the streets, and at the intersections of Streets with the boundaries of the plat as shown on said plat.

R. J. Cooke Registered Land Surveyor, East Tawas, Michigan.



All dimensions are given in feet and decimals thereof.
All bearings are magnetic.

(HAMMELL BEACH SHORES)
— A RECORDED PLAT —

POINT OF BEGINNING

SEC. 25

SEC. 36

T20N
R7E

3443