

RAM
10-12-48

WILK'S ADDITION

TO THE
CITY OF AU GRES

A SUBDIVISION OF PART OF E1/2 OF SW1/4 OF SECTION 13 T19N R6E
AU GRES TOWNSHIP ARENAC COUNTY, MICHIGAN.

DEDICATION

KNOW ALL MEN BY THESE PRESENTS, That we Mike Wilk as proprietor, and Mary Wilk his wife, have caused the land embraced in the annexed plat to be surveyed, laid out and platted, to be known as WILK'S ADDITION to the City of Au Gres a subdivision of part of E1/2 of SW1/4 of section 13 T19N R6E Au Gres Township Arenac County, Michigan.

Signed and Sealed in Presence of

R. J. Cooke _____
Eleanor I. Cooke _____
Mike Wilk (L.S.)
Mary Wilk (L.S.)

STATE OF MICHIGAN, }
County of Isoco } ss.

On this 10th day of December, 1946 before me, a Notary Public in and for said county, personally came the above named Mike Wilk and Mary Wilk his wife, known to me to be the persons who executed the above dedication, and acknowledged the same to be their free act and deed.

R. J. Cooke
Notary Public Isoco County, Michigan.

My Commission expires July 12, 1947.

COUNTY TREASURER'S CERTIFICATE RELATING TO TAXES

Office of County Treasurer, Arenac County.
I hereby certify, That there are no tax liens or titles held by the State on the lands described hereon, and that there are no tax liens or titles held by individuals on said lands, for the five years preceding the 24th day of October, 1948 and that the taxes for said period of five years are paid, as shown by the records of this office.
This certificate does not apply to taxes, if any, now in process of collection by city collecting officers.

Claude E. Upton
County Treasurer.

SURVEYOR'S CERTIFICATE

I hereby certify that the plat hereon delineated is a correct one and that permanent metal monuments consisting of bars not less than one-half inch in diameter and 48 inches in length encased in a concrete cylinder at least 4 inches in diameter and 48 inches in depth have been placed at points marked thus © as thereon shown at all angles in the boundaries of the land platted as shown on said plat.

R. J. Cooke
Registered Land Surveyor.
East Tawas, Michigan.

CERTIFICATE OF APPROVAL BY COUNTY BOARD

This plat was approved on the 8th day of October, 1948

Avis Black Register of Deeds
Asa Whiting County Clerk
Claude E. Upton County Treasurer.

COPY
Arenac County
Plat of "Wilk's Addition"
City of Au Gres
10th day of
December 1946
48" x 48" Plats
30
Avis Black

DESCRIPTION OF LAND PLATTED

The land embraced in the annexed plat of WILK'S ADDITION to the City of Au Gres a subdivision of part of E1/2 of SW1/4 of section 13 T19N R6E Au Gres Township Arenac County, Michigan is described as follows: From the 1/4 corner common to sections 12 and 13 T19N R6E Au Gres Township Arenac County, Michigan thence S 2° 10' 50" W 2874.2 feet, thence S 0° 24' W 269.97 feet, thence N 89° 36' W 33 feet to Point of Beginning. Thence N 89° 36' W 165 feet, thence S 0° 24' W 944.69 feet, thence N 89° 04' 20" E 165.05 feet, thence N 0° 24' E 940.57 feet to Point of Beginning. Being a replat of part of Lot 5 Block 2 of Supervisor's Plat of the City of Au Gres, Michigan.

CERTIFICATE OF MUNICIPAL APPROVAL

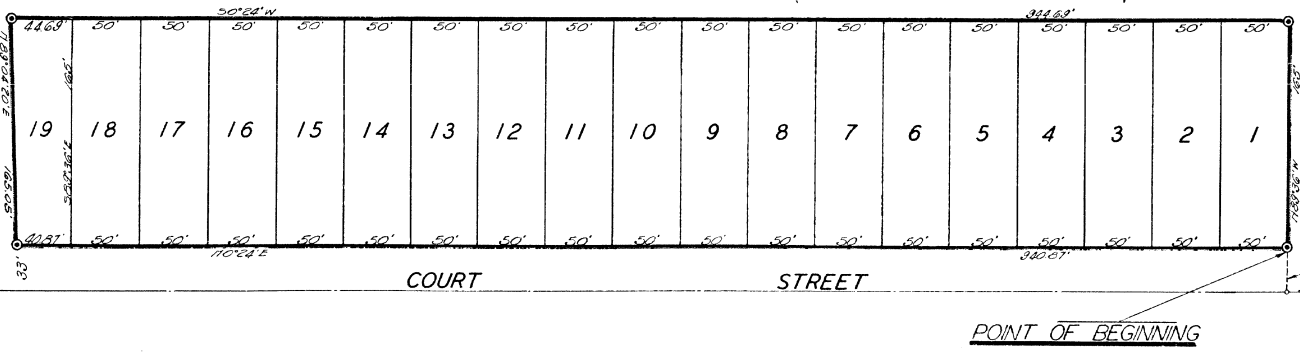
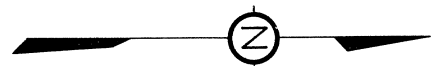
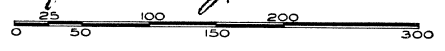
This plat was approved by the Common Council of the City of Au Gres at a meeting held September 10, 1948.

Lincoln Ennes
City Clerk.

Examined and approved
Oct 12, 1948
Thommas J. Kelly
Mayor

I HEREBY CERTIFY THAT THIS COPY IS A TRUE COPY OF THE ORIGINAL PLAT FORWARDED TO THE REGISTER OF DEEDS FOR RECORD.
Dated Oct. 12, 1948
Thommas J. Kelly
Mayor

SCALE - 1 INCH = 60 FEET
All dimensions are given in feet and decimals thereof.
All bearings are magnetic.



MICHIGAN AVENUE

1/4 CORNER
SEC 13
SEC 12
T19N
R6E

31102