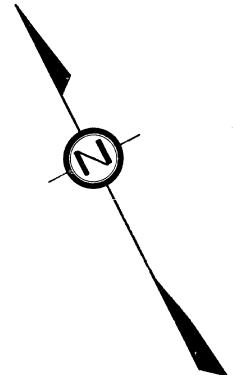


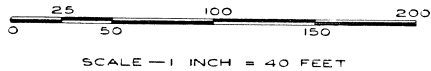
# SCHOOL TRUSTEES ADDITION

## TO THE CITY OF AUGRES

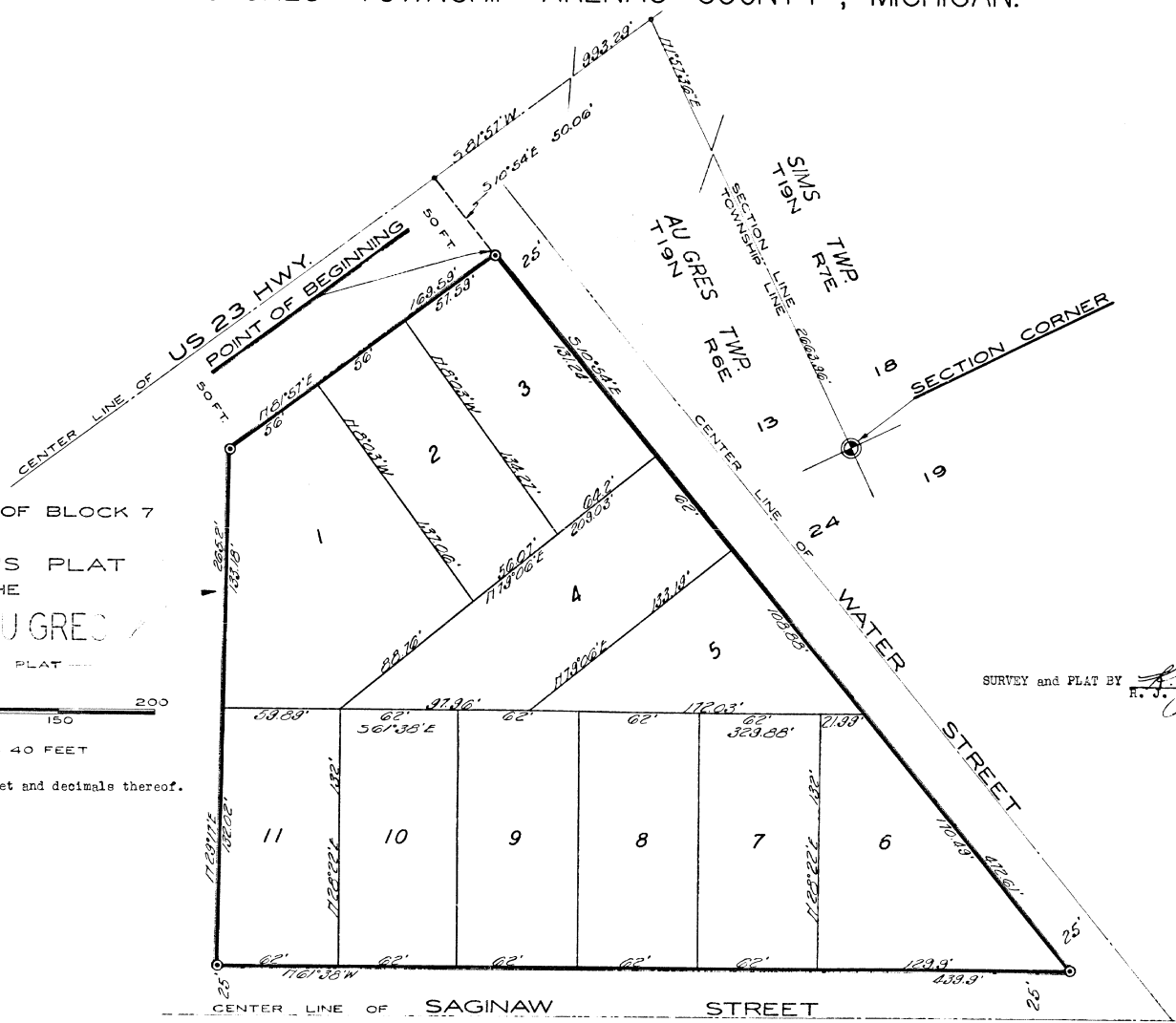
A SUBDIVISION OF PART OF GOVERNMENT LOT 5 OF SECTION 13 T19N R6E  
AUGRES TOWNSHIP ARENAC COUNTY, MICHIGAN.



PART OF LOT 6 OF BLOCK 7  
OF  
SUPERVISOR'S PLAT  
OF THE  
CITY OF AUGRES  
A RECORDED PLAT



All dimensions are given in feet and decimals thereof.  
All bearings are magnetic.



SURVEY and PLAT BY *R. J. Cooke*  
R. J. Cooke Registered Land Surveyor.  
East Tawas, Michigan.