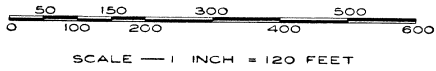


# HAMMELL BEACH WOODS

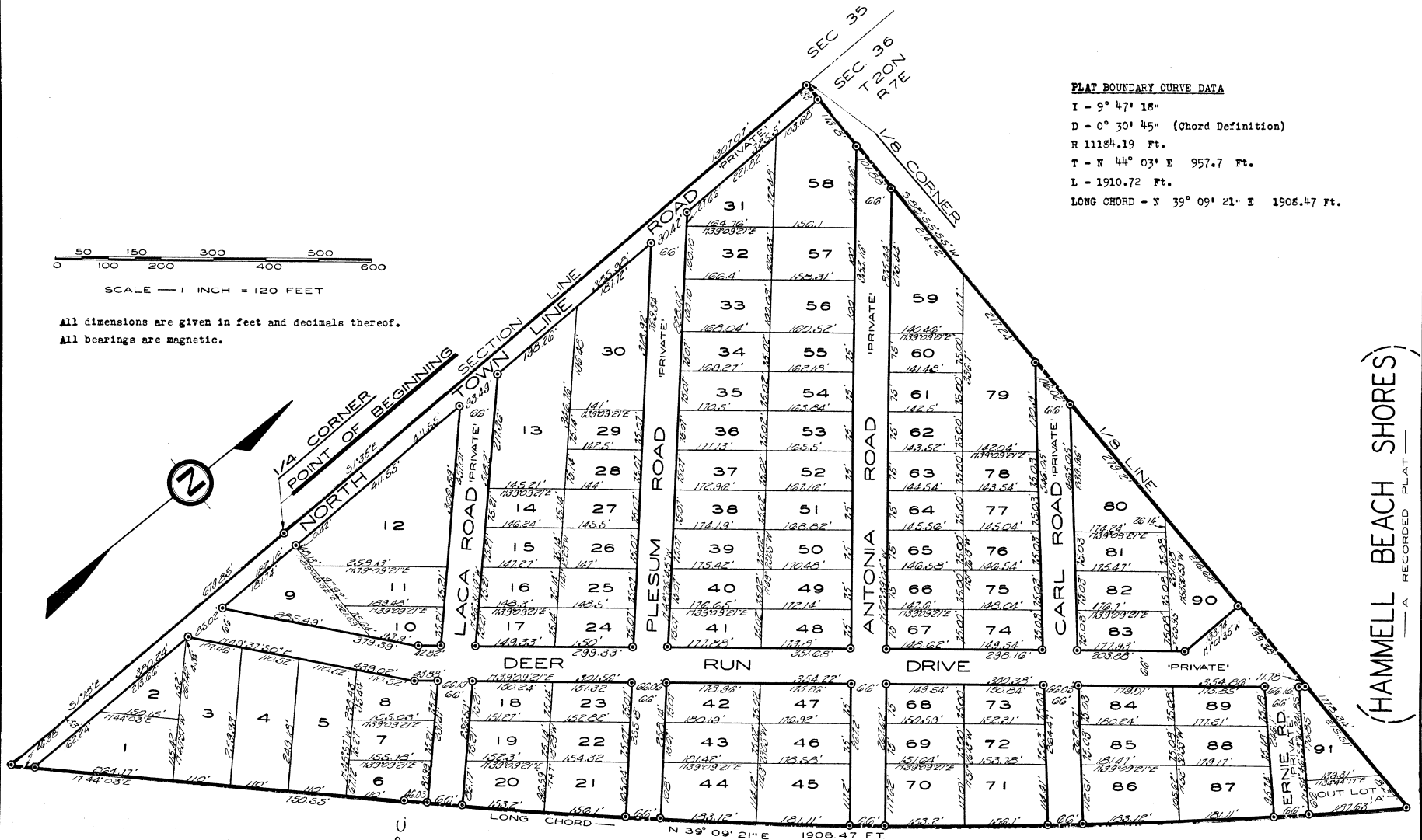
A SUBDIVISION OF PART OF GOVERNMENT LOTS 2 & 3 OF SECTION 36 T20N R7E  
WHITNEY TOWNSHIP ARENAC COUNTY, MICHIGAN.



All dimensions are given in feet and decimals thereof.  
All bearings are magnetic.

### PLAT BOUNDARY CURVE DATA

I - 9° 47' 18"  
 D - 0° 30' 45" (Chord Definition)  
 R 11184.19 Ft.  
 T - N 44° 03' E 957.7 Ft.  
 L - 1910.72 Ft.  
 LONG CHORD - N 39° 09' 21" E 1908.47 Ft.



(HAMMELL BEACH)  
— A RECORDED PLAT —

(HAMMELL BEACH SHORES)  
— A RECORDED PLAT —

SURVEY and PLAT BY *[Signature]*  
 H. J. Cooke Registered Land Surveyor.  
 East Tawas, Michigan.