

# POINT WENONAH SUBDIVISION NO. 2

BEING PART OF GOVERNMENT LOT 1, SECTION 32 & GOVERNMENT LOT 3, SECTION 29

STANDISH TOWNSHIP - T 18 N - R 5 E - ARENAC COUNTY - MICHIGAN

### DEDICATION

KNOW ALL MEN BY THESE PRESENTS, that we, **Ralph H. Didier and Mary F. Didier, his wife**, as proprietors, have caused the land embraced in the annexed plat to be surveyed, laid out and platted, to be known as **Point Wenonah, No. 2, a subdivision of Part of Government Lot No. 1, Section 32, and a part of Government Lot No. 3, Section 29.** All in Standish Township, T18N, R5E, Arenac County, Michigan and that the streets and channels as shown on said plat are hereby dedicated to the use of the lot owners only.

Signed and Sealed in the Presence of:  
*Thelma Lewandoski* (Witness) *Ralph H. Didier* (L.S.)  
*Thelma Lewandoski* (Witness) *Ralph H. Didier*  
*Alta Varty* (Witness) *Mary F. Didier* (L.S.)  
*Alta Varty* (Witness) *Mary F. Didier*

### ACKNOWLEDGMENT

STATE OF MICHIGAN  
 County of Arenac ss.  
 On this 11th day of August, 1954, before me, a Notary Public in and for said County, personally came the above named **Ralph H. Didier and Mary F. Didier, his wife**, known to me to be the persons who executed the above dedication, and acknowledged the same to be their free act and deed.  
*Alta Varty* Arenac  
 Notary Public, County  
 My Commission expires Sept. 15, 1955

### DESCRIPTION OF LAND PLATTED

The land embraced in the annexed plat of **Point Wenonah, No. 2, a subdivision of Part of Government Lot No. 1, Section 32, and a Part of Government Lot No. 3, Section 29.** All in Standish Township, T18N, R5E, Arenac County, Michigan is described as follows:

Beginning at a point which lies S 8° 35' W 25.2 feet from the NE corner of Government Lot 1, Section 32, T 18 N, R 5 E, Michigan Meridian, said point being the NE corner of Lot 1, "POINT WENONAH" as recorded on page 11 lib 2 of Plats, Arenac County Records on September 25, 1945; thence from said point of beginning West - 185.4 feet; thence S 8° 07' W - 275.0 feet; thence N 82° 50' W - 25.0 feet; thence N 86° 32' W - 449.0 feet; thence N 89° 44' W - 20 feet; thence N 1° 20' 30" W - 986.4 feet; thence N 89° 44' E - 781.3 feet; thence S 25° 40' 40" W - 121.0 feet; thence S 7° 58' 40" W - 70.0 feet; thence S 9° 14' E - 300.0 feet; thence S 16° 42' 20" E - 158.0 feet; thence S 6° 38' 40" W - 37.4 feet; thence S 39° 02' W - 108.7 feet to point of beginning.

### SURVEYOR'S CERTIFICATE

I hereby certify that the plat hereon delineated is a correct one and that permanent metal monuments consisting of bars not less than one-half inch in diameter and 48 inches in length, or shorter bars of not less than one-half inch in diameter lapped over each other at least 6 inches with an over-all length of not less than 48 inches, encased in a concrete cylinder at least 4 inches in diameter and 48 inches in depth have been placed at points marked thus ( . . . ) as thereon shown at all angles in the boundaries of the land platted, at all the intersections of streets, intersections of alleys, or of streets and alleys, and at the intersections of streets and alleys with the boundaries of the plat as shown on said plat.

*Arthur H. Leach*  
 Registered Professional Engineer  
 Arthur H. Leach # 9236



Scale 1 inch = 80 feet

All dimensions are in feet and decimals thereof.  
 All water front lots extend to waters edge.

### MUNICIPAL APPROVAL

This plat was approved by the Standish Township Board of the Standish Township at a meeting held August 11, 1954 by Burdett Milne (Clerk)

### APPROVAL BY COUNTY PLAT BOARD

This plat was approved on the 11th day of August, 1954 by the Arenac County Plat Board

*Avia Black* (County Register of Deeds)  
*Douglas Black* (County Clerk)  
*Claude E. Upton* (County Treasurer)  
*Archie McCready* (County Drain Commissioner)

### COUNTY TREASURER'S CERTIFICATE

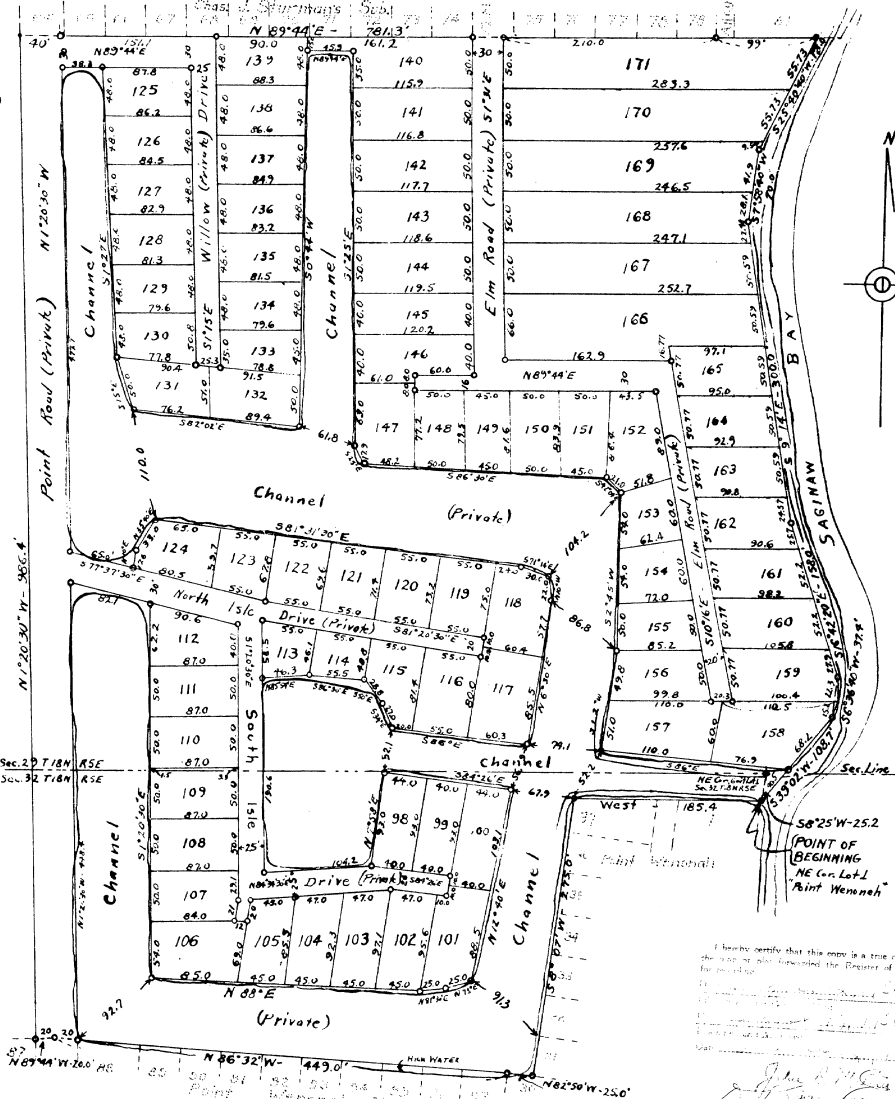
Office of County Treasurer, ARENAC County.  
 I hereby certify, that there are no tax liens or titles held by the State on the lands described hereon, and that there are no tax liens or titles held by individuals on said lands, for the five years preceding the 11th day of August, 1954 and that the taxes for said period of five years are all paid, as shown by the records of this office.

This certificate does not apply to taxes, if any, now in process of collection by township, city or village collecting officers.  
*Claude E. Upton* (County Treasurer)

### APPROVAL BY BOARD OF COUNTY ROAD COMMISSIONERS

This plat has been examined and was approved on the 2nd day of August, 1954 by the Arenac County Board of Road Commissioners.

*Earl H. Foster* (Chairman)  
*John Adams* (Member)  
*Calvin Ennes* (Member)



I hereby certify that this map is a true and correct copy of the original plat as recorded in the Register of Deeds for Arenac County, Michigan.  
*Arthur H. Leach*  
 Registered Professional Engineer

35251