

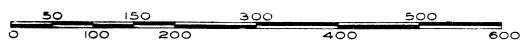
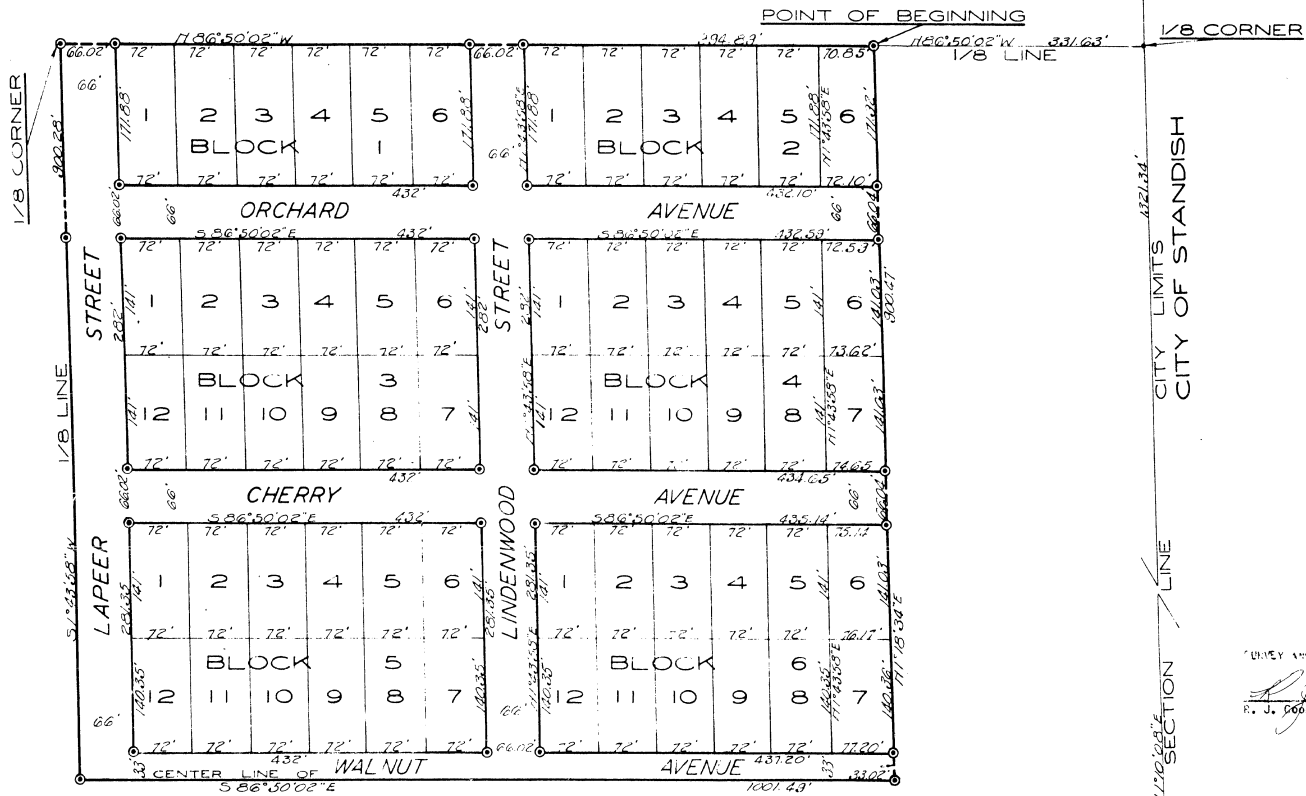
ORCHARD LANE

OF THE

CITY OF STANDISH

A SUBDIVISION OF PART OF THE SE1/4 OF THE SE1/4 OF SECTION 2 T18N R4E
LINCOLN TOWNSHIP ARENAC COUNTY, MICHIGAN.

(TINNEY SUBDIVISION)
— A RECORDED PLAT —
(MAJOR'S SUBDIVISION)
— A RECORDED PLAT —



ALL DIMENSIONS ARE GIVEN IN FEET AND DECIMALS THEREOF
ALL BEARINGS ARE MAGNETIC

CENTER LINE OF CEDAR STREET

SECTION CORNER

T18N
R4E

35361