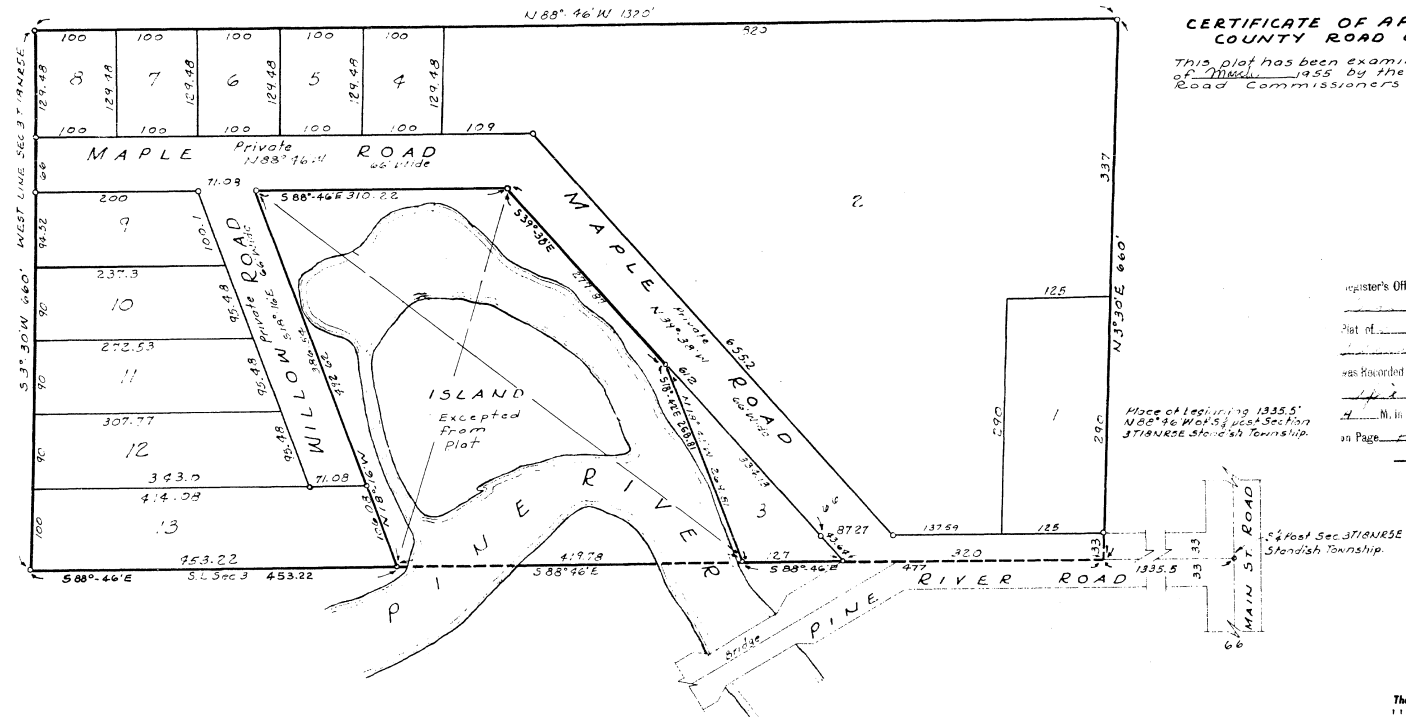


MARTIN C. KLANN
CONSULTING CIVIL ENGINEER
1189 PINE ST. E. SPOKESVILLE, MICH.

EDWARD B. RATAJSKI

"MAPLE SUBDIVISION"
A PART OF THE SW 1/4 OF SECTION 3 T18N R5E STANDISH TOWNSHIP
ARENAC COUNTY MICHIGAN

SCALE: 1" = 100'
ALL DIMENSIONS ARE IN FEET OR DECIMALS THEREOF



CERTIFICATE OF APPROVAL BY BOARD OF
COUNTY ROAD COMMISSIONERS

This plat has been examined and was approved on the 21st day of March, 1955 by the ARENAC County Board of Road Commissioners

Chairman
Calvin Jenness
Member
Tom Logan
Member

COPY
Register's Office
County: ss.
Plat of: Maple Subdivision Date: April 21, 1955
Filed in Register of Deeds recording
Date: April 24, 1955
Examined and approved
Date: April 25, 1955
A. D. 19, Sec. 3 T18N R5E
4 P. M. in Like
By: John J. Upton County Treasurer
Original on file

DEDICATION
KNOW ALL MEN BY THESE PRESENTS, that we, Edward B. Ratajski and Mary W. Ratajski, his wife,

as proprietors, have caused the land embraced in the annexed plat to be surveyed, laid out and platted, to be known as "MAPLE SUBDIVISION" a part of the SW 1/4 of Section 3 T18N R5E Standish Township, Arenac County, Michigan

and that the streets, except those marked "Private" as shown on said plat are hereby dedicated to the use of the public.

Signed and Sealed in the Presence of:
Avis Black Edward B. Ratajski
Avis Black (Witness) Edward B. Ratajski
Mary W. Ratajski
Mary W. Ratajski (Witness) Mary W. Ratajski
Bl. FORDMAN

ACKNOWLEDGMENT
STATE OF MICHIGAN
County of Arenac ss.
On this 12th day of Jan, 1955, before me, a Notary Public in and for said County, personally came the above named Edward B. Ratajski and Mary W. Ratajski

known to me to be the persons who executed the above dedication, and acknowledged the same to be their free act and deed.
Avis Black
Notary Public, in and for said County
My Commission expires Mar. 6, 1956

SURVEYOR'S CERTIFICATE
I hereby certify that the plat hereon delineated is a correct one, and that permanent monuments consisting of iron rods at least one half inch in diameter and 48 inches in length, encased in concrete cylinders four inches in diameter and 48 inches in length, have been set at points marked thus (•) as thereon shown at all angles in the boundaries of the land platted, at all intersections of the lines of streets and at intersections of the lines of streets with the boundaries of the plat.
Martin C. Klann
MARTIN C. KLANN Registered Professional Engineer

APPROVAL BY COUNTY PLAT BOARD
This plat was approved on the 21st day of March, 1955 by the Arenac County Plat Board

Avis Black (County Register of Deeds)
Douglas C. Black (County Clerk)
Claude E. Upton (County Treasurer)
Archie Mc Cready (County Drain Commissioner)

MUNICIPAL APPROVAL
This plat was approved by the Board of the County of Standish at a meeting held March 18, 1955

DESCRIPTION OF LAND PLATTED
The land embraced in the annexed plat of Edward B. Ratajski "MAPLE SUBDIVISION" a part of the SW 1/4 of Section 3 T18N R5E Standish Township, Arenac County, Michigan is described as follows:

Commencing at a point on the south line of Section 3 T18N R5E 1335.50 ft. N88°-46' W of the South 1/4 post of said section, thence N3°-30' E 660 ft. thence N88°-46' W 1320 ft. to the west line of said section, thence S88°-46' E 453.22 ft. to the south line of said section, thence S88°-46' E 453.22 ft. thence N10°-16' W 472.62 ft. thence S88°-46' E 310.22 ft. thence S39°-38' E 272.87 ft. thence S18°-42' E 249.81 ft. thence S88°-46' E 447 ft. to the place of beginning. This plat contains 13 lots.

COUNTY TREASURER'S CERTIFICATE
Office of County Treasurer, Standish County.
I hereby certify, that there are no tax liens or titles held by the State on the lands described hereon, and that there are no tax liens or titles held by individuals on said lands, for the five years preceding the 21st day of March, 1955, and that the taxes for said period of five years are all paid, as shown by the records of this office.
This certificate does not apply to taxes, if any, now in process of collection by township, city or village collecting officers.
Claude E. Upton (County Treasurer)

36022