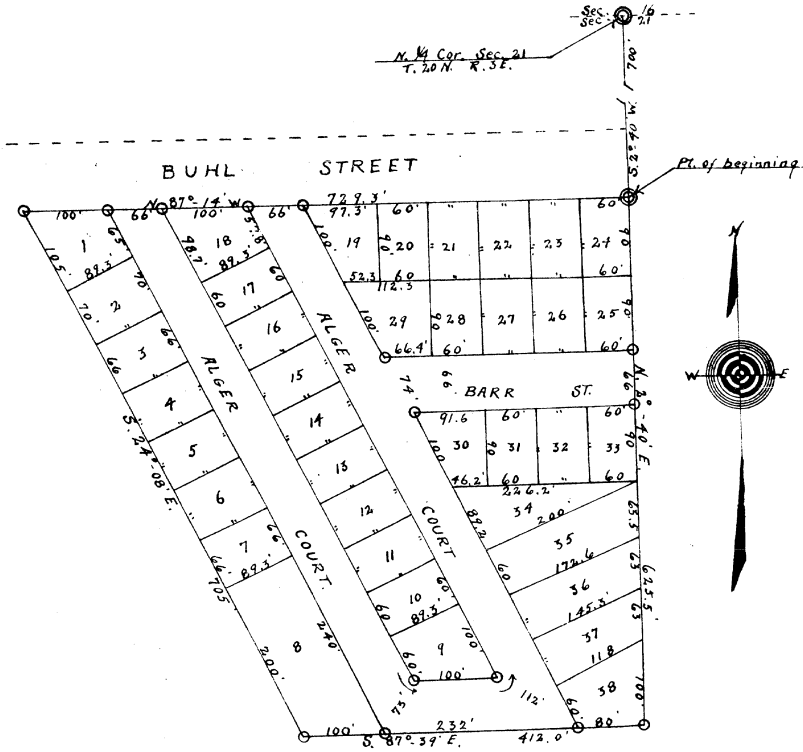
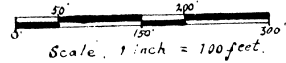


SOUTH ALGER SUBDIVISION.

A Subdivision of a part of the N.E. 1/4 of the N.W. 1/4 of Sec. 21, T. 20 N. R. 3 E.

MOFFATT TWP. ARENAC CO. MICH.



COPY

Register's Office
Arenac County, Mich.
Plat of South Alger Subdivision
Moffatt Twp.
was Recorded this 20th day of September A.D. 1956 at 10 o'clock A.M. in L.B. 2 of Book 112 on Page 21
Ann Arbor
ORIGINAL ON FILE

I hereby certify this copy is a true and correct copy of the original as recorded in the register of deeds at recording.
Date September 19, 1956
FILED IN AUDITOR GENERAL'S DEPT.
Date September 24, 1956
EXAMINED AND APPROVED
Date September 19, 1956
Frank J. Gorman
Auditor General
By D. L. MacElroy

DESCRIPTION OF LAND PLATTED

The land embraced in the annexed plat of South Alger Subdivision a part of the N. E. 1/4 of the N. W. 1/4 of sec. 21, T. 20 N. R. 3 E. Moffatt Twp. Arenac Co. Mich.

is described as follows

Beginning at a point which is S2°40'W. 700 ft. from the N 1/4 corner of Sec. 21 T. 20 N. R. 3 E. Moffatt Twp. Arenac Co., Michigan running thence N87°14' W. 729.3 ft. thence S24°08' E. 705 ft. thence S87°39' E. 412.0 ft. thence N2°40' E. 625.5 ft. to point of beginning.

All Dimensions are in feet and decimals thereof.

MUNICIPAL APPROVAL

This plat was approved by the Township Board of the Township of Moffatt at a meeting held May 16, 1956
Marvin Seder (Clerk)

APPROVAL BY COUNTY PLAT BOARD

This plat was approved on the 7th day of May 1956
Ann Arbor
Avis Black (County Register of Deeds)
Douglas Black (County Clerk)
Claude E. Upton (County Treasurer)
Archie McCready Co. Drain Comm.

DEDICATION

KNOW ALL MEN BY THESE PRESENTS, that I Joseph Sakaly, as individual owner, a married man, but whose wife Helga Sakaly, released all dower interest by a post marital agreement, L. 1884 99 page 200 of Deeds as proprietors, have caused the land embraced in the annexed plat to be surveyed, laid out and platted, to be known as South Alger Subdivision being a part of the N. E. 1/4 of the N. W. 1/4 of Sec. 21 T. 20 N. R. 3 E. Arenac Co. Mich.

and that the streets as shown on said plat are hereby dedicated to the use of the public

Signed and Sealed in the Presence of
Joseph Sakaly (L.S.)
Dennis J. O'Keefe (Witness)
Ann Arbor (Witness)

ACKNOWLEDGMENT

STATE OF MICHIGAN
County of ARENAC ss.
On this 2nd day of June 1956 before me, a Notary Public in and for said County, personally came the above named Joseph Sakaly

known to me to be the persons who executed the above dedication, and acknowledged the same to be their free act and deed.

Dennis J. O'Keefe
Notary Public - ARENAC County
My Commission expires July 30, 1958

SURVEYOR'S CERTIFICATE

I hereby certify that the plat hereon delineated is a correct one and that permanent metal monuments consisting of bars not less than one-half inch in diameter and 48 inches in length, or shorter bars of not less than one-half inch in diameter lapped over each other at least 6 inches with an over-all length of not less than 48 inches, encased in a concrete cylinder of at least 4 inches in diameter and 48 inches in depth have been placed at points marked thus (.....) as thereon shown at all angles in the boundaries of the land platted, at all the intersections of streets, intersections of alleys, or of streets and alleys, and at the intersections of streets and alleys with the boundaries of the plat as shown on said plat.

H. Cecil Hook
Registered Land Surveyor or Registered Professional Engineer

APPROVAL BY BOARD OF COUNTY ROAD COMMISSIONERS

This plat has been examined and was approved on the 7th day of May 1956 by the Arenac County Board of Road Commissioners.

Thomas Logan (Chairman)
John C. Adams (Member)
Calvin Ennis (Member)

COUNTY TREASURER'S CERTIFICATE

Office of County Treasurer, Ann Arbor County.
I hereby certify, that there are no tax liens or titles held by the State on the lands described hereon, and that there are no tax liens or titles held by individuals on said lands, for the five years preceding the 7th day of September 1956 and that the taxes for said period of five years are all paid, as shown by the records of this office.

This certificate does not apply to taxes, if any, now in process of collection by township, city or village collecting officers.

Claude E. Upton (County Treasurer)

38311