

PLAT
OF

WALTER'S RIFLE RIVER SUBDIVISION

A PART OF S 1/2 OF NE 1/4 OF SW 1/4

SECTION 15 T19N, R5E

CITY OF OMER
ARENAC COUNTY
MICHIGAN
-1956-

NOTE:

ALL DIMENSIONS ARE IN FEET AND DECIMALS THEREOF.

ALL BEARINGS SHOWN HEREON ARE MAGNIC.

DEDICATION

KNOW ALL MEN BY THESE PRESENTS, that we

Clarence Walters and Margaret Walters, his wife, and...
State Bank of Standish, Roy J. Crandell, President, H.A. Luecke, Cashier
as proprietors, have caused the land embraced in the annexed plat to be surveyed,
laid out and platted, to be known as, Walters Rifle River Subdivision
a part of S 1/2 of NE 1/4 of SW 1/4 of Section 15, T19N,
R5E, City of Omer, Arenac County, Michigan.

and that the streets as shown on said plat are
hereby dedicated to the use of public

Signed and Sealed in
the Presence of

George B. Moad Jr. (Witness)
M. Beldora Moad (Witness)
Clarence Walters (L.S.)
Margaret Walters (L.S.)

Signed and Sealed in
the Presence of

Florence Eyrich (Witness)
Ruth Orr (Witness)
Roy J. Crandell (L.S.)
H.A. Luecke (Cashier)

STATE BANK OF STANDISH
STANDISH, MICHIGAN

MUNICIPAL APPROVAL

This plat was approved by the Municipal Council
of the City of Omer
at a meeting held August 20, 1956

John Nowak (Clerk)

ACKNOWLEDGMENT

STATE OF MICHIGAN

County of Arenac

On this 20th day of August, 1956, before me,
a Notary Public in and for said County, personally came the above named,
Clarence Walters and Margaret Walters, his wife,

known to me to be the persons who executed the above dedication, and acknowledged
the same to be their free act and deed.

George B. Moad Jr. (Notary Public)
My Commission expires 12-7-58

DESCRIPTION OF LAND PLATTED

The land embraced in the annexed plat of

Walters Rifle River Subdivision, a part of S 1/2 of
NE 1/4 of SW 1/4 of Section 15, T19N, R5E, City of
Omer, Arenac County, Michigan.

is described as follows:

Commencing at the center of Section 15, T19N,
R5E. Thence on N 87° 25' W on East and West 1/4 line 1320.15 ft.
Thence S 1° 30' W 661.95 ft. to the point of beginning. Thence
S 87° 31' E 875.0 ft. Thence S 29° 31' E 155.31 ft. Thence
S 87° 31' E 150.86 ft. Thence along the arc of a 79° 36' degree
of curve the long chord of which bears S 17° 19' E 249.5 ft.
Thence S 7° 48' E 363.03 ft. Thence N 86° 55' W 243.70 ft.
Thence N 1° 30' E 363.03 ft. Thence N 87° 31' W 975.79 ft.
Thence N 1° 30' E 198.0 ft. to the point of beginning.
Containing Lots 1 to 12 inclusive.

APPROVAL BY COUNTY PLAT BOARD

This plat was approved on the 7th day of
September, 1956 by the
Arenac County Plat Board

Avis Black (County Register of Deeds)
Douglas B. Black (County Clerk)
Claude E. Upton (County Treasurer)
Archie McCready (County Drain Commissioner)

COPY

Register's Office
Arenac County
File of Walters Rifle River Sub.
City of Omer
I hereby certify this copy is a true copy of map
or plat in the Register of Deeds for
recording.

Date: Sept 25, 1956

FILED IN AUDITOR GENERAL'S DEPT.

Date: Sept 4, 1956

EXAMINED AND APPROVED

Date: Sept 25, 1956

Notary General

D. L. Mac Elroy

Notary General

D. L. Mac Elroy

Notary General

D. L. Mac Elroy

Notary General

D. L. Mac Elroy

Notary General

D. L. Mac Elroy

Notary General

D. L. Mac Elroy

Notary General

D. L. Mac Elroy

Notary General

D. L. Mac Elroy

Notary General

D. L. Mac Elroy

Notary General

D. L. Mac Elroy

Notary General

D. L. Mac Elroy

Notary General

D. L. Mac Elroy

Notary General

D. L. Mac Elroy

Notary General

D. L. Mac Elroy

Notary General

D. L. Mac Elroy

Notary General

D. L. Mac Elroy

Notary General

D. L. Mac Elroy

Notary General

D. L. Mac Elroy

Notary General

D. L. Mac Elroy

Notary General

APPROVAL BY BOARD OF COUNTY ROAD COMMISSIONERS

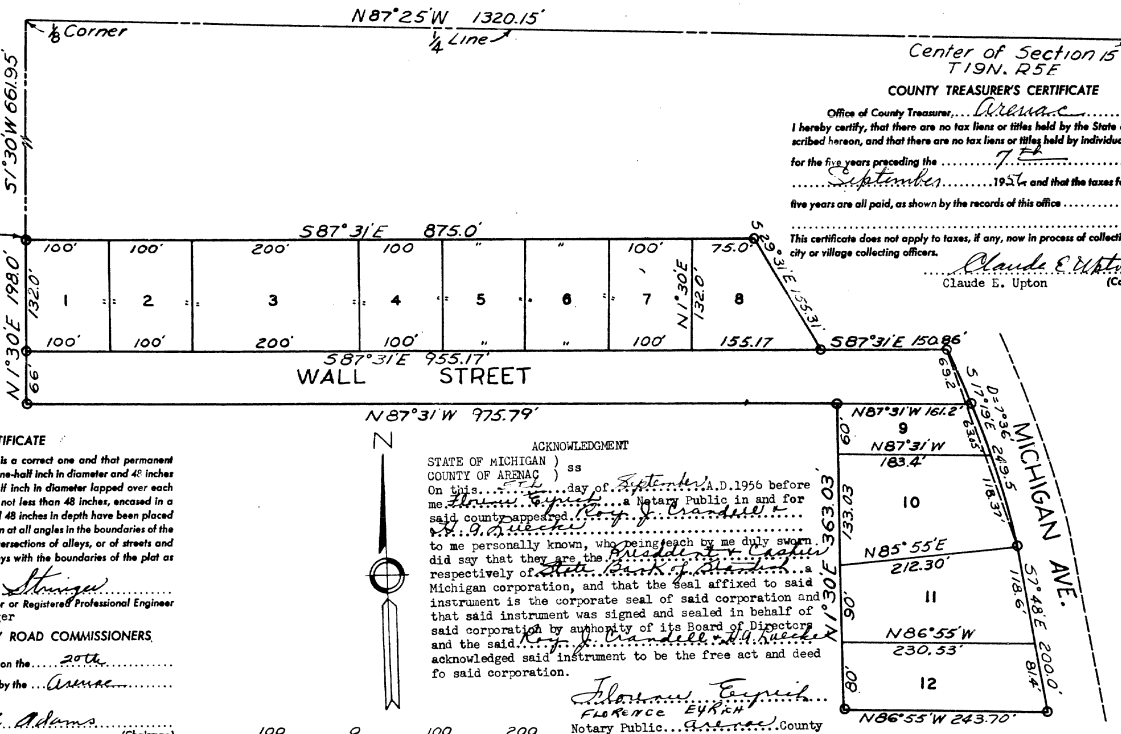
This plat has been examined and was approved on the 20th
day of August, 1956 by the
County Board of Road Commissioners.

John C. Adams (Chairman)
Calvin Ernes (Member)
Thomas Logan (Member)

D. L. Mac Elroy SURVEYOR'S CERTIFICATE

I hereby certify that the plat hereon delineated is a correct one and that permanent
metal monuments consisting of bars not less than one-half inch in diameter and 48 inches
in length, or shorter bars of not less than one-half inch in diameter lapped over each
other at least 6 inches with an overall length of not less than 48 inches, successed in a
concrete cylinder of least 4 inches in diameter and 48 inches in depth have been placed
at points marked thus (.....) as thereon shown at all angles in the boundaries of the
land platted, at all the intersections of streets, intersections of alleys, or of streets and
alleys, and at the intersections of streets and alleys with the boundaries of the plat as
shown on said plat.

Lloyd A. Stringer
Registered Land Surveyor or Registered Professional Engineer
Lloyd A. Stringer



COUNTY TREASURER'S CERTIFICATE

Office of County Treasurer, Arenac County
I hereby certify that there are no tax liens or titles held by the State on the lands de-
scribed hereon, and that there are no tax liens or titles held by individuals on said lands,
for the five years preceding the 7th day of
September, 1956, and that the taxes for said period of
five years are all paid, as shown by the records of this office.

This certificate does not apply to taxes, if any, now in process of collection by township,
city or village collecting officers.
Claude E. Upton (County Treasurer)

38367