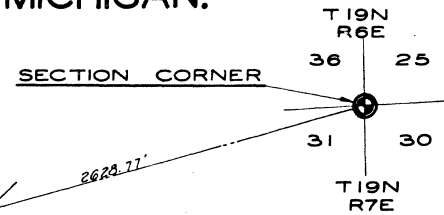
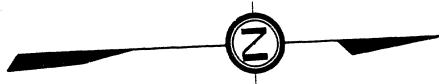


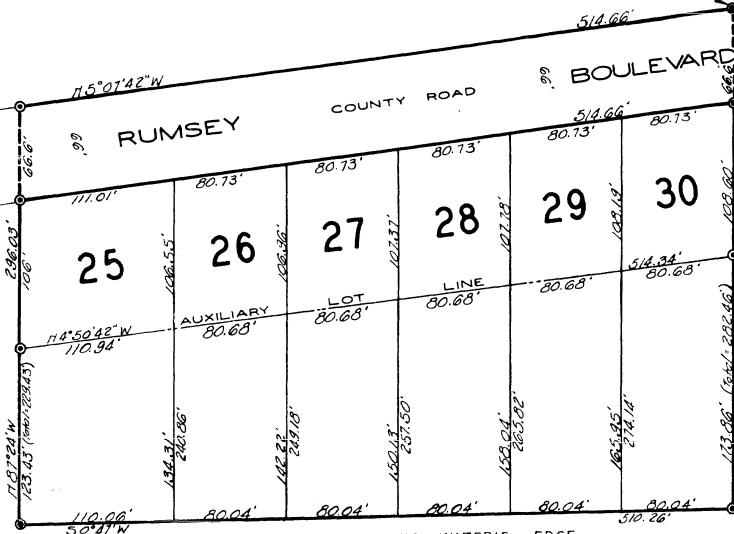
SECOND ADDITION TO OAK RIDGE

A SUBDIVISION OF PART OF GOVERNMENT LOTS 1 AND 2 OF SECTION 31 T19N R7E
AU GRES TOWNSHIP ARENAC COUNTY, MICHIGAN.

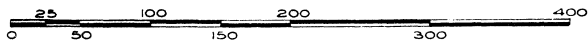


POINT OF BEGINNING

FIRST ADDITION
TO
OAK RIDGE
— A RECORDED PLAT —



SAGINAW BAY



SCALE — 1 INCH = 60 FEET

ALL DIMENSIONS ARE GIVEN IN FEET AND DECIMALS THEREOF
ALL BEARINGS ARE MAGNETIC

SURVEY AND PLAT BY

R. J. Cooke
R. J. COOKE

REGISTERED LAND SURVEYOR
280 NORTH ADAMS STREET
EAST TAWAS, MICHIGAN.

9047