

# SUPERVISOR'S PLAT OF EYMER'S SUBD.

A Subdivision of a part of the W. 1/2 of the S.E. 1/4 of Sec. 35, T. 20 N. R. 3 E.

## MOFFATT TWP. ARENAC CO. MICH.

**DEDICATION**

KNOW ALL MEN BY THESE PRESENTS, That I, Clyde Allen, Supervisor of the Township Of Moffatt, Arenac County, State of Michigan, by virtue of authority invested in me by Section 51, Act 172, of 1929, having been duly authorized by the Moffatt Township Board have caused the land embraced in the annexed plat to be surveyed, laid out and platted, to be known as "Supervisor's plat of Eyrmer's Subdivision" a subdivision of a part of the W. 1/2 of the S.E. 1/4 of section 35, T. 20 N., R. 3 E. Moffatt Twp., Arenac County Michigan, and that the Streets or Roads as shown on the said plat are now being used for such purposes, and that the plat conforms with the requirements of section 51, Act 172, of Public Acts of 1929 as Amended.

Witness my hand and seal this 23rd day of February, 1961.  
 Clyde Allen, Supervisor  
 Moffatt Twp.

**COUNTY TREASURERS CERTIFICATE**

Office of County Treasurer, Arenac County Michigan.  
 I hereby certify, that there are no tax liens or titles held by the State on the lands described hereon, and that there are no tax liens or titles held by individuals on said lands, for five years preceding the 1st day of January, 1961, and that the taxes for the said period of five years are all paid, as shown by the records of this office. This certificate does not apply to taxes, if any, now in process of collection by Townships, City or Village collecting officers.

Witness my hand and seal this 23rd day of February, 1961.  
 County Treas.

**COUNTY PLAT BOARD APPROVAL**

This was approved by the Arenac County Plat Board on the 23rd day of February, 1961.

Witness my hand and seal this 23rd day of February, 1961.  
 County Clerk

**DESCRIPTION OF LAND PLATED**

The land embraced in the annexed plat of "Supervisor's Plat of Eyrmer's Subdivision, a subdivision of a part of the W. 1/2 of the S.E. 1/4 of section 35, T. 20 N., R. 3 E. Moffatt Twp., Arenac Co. Mich. is described as follows:  
 Beginning at the N.E. corner of the W. 1/2 of the S.E. 1/4 of sec. 35, T. 20 N., R. 3 E. running thence N. 88° 40' W. 1320 feet, thence S. 02° 10' W. 2335 feet, thence S. 88° 40' E. 1320 feet, thence N. 02° 10' E. 2335 feet to point of beginning, containing 76 lots. All dimensions are in feet and decimals thereof. Bearings are magnetic.

**ARENAC CO. ROAD COMMISSION APPROVAL**

The Arenac County Road Commission assumes no responsibility for the maintenance or improvement of the Streets or roads as shown on this plat until such time as the Streets or Roads shall be brought to the minimum standard as set forth by this Commission.

This plat has been examined and was approved by the Arenac County Road Commission on this 23rd day of February, 1961.

Witness my hand and seal this 23rd day of February, 1961.  
 Chairman  
 Road Commissioner

**ACKNOWLEDGEMENT**

STATE OF MICHIGAN )  
 COUNTY OF ARENAC ) ss

On this 23rd day of February, 1961, before me, a Notary Public in and for the said County and State personally came the above named Clyde Allen, Supervisor of Moffatt Twp., known to me to be the person who executed the above dedication and acknowledged the same to be his free act and deed as such Supervisor.

My commission expires, September 12, 1962.

**MUNICIPAL APPROVAL**

This plat was approved by the Township Board of the Township of Moffatt at a meeting held on the 23rd day of February, 1961.

Witness my hand and seal this 23rd day of February, 1961.  
 Township Clerk

**SURVEYOR'S CERTIFICATE**

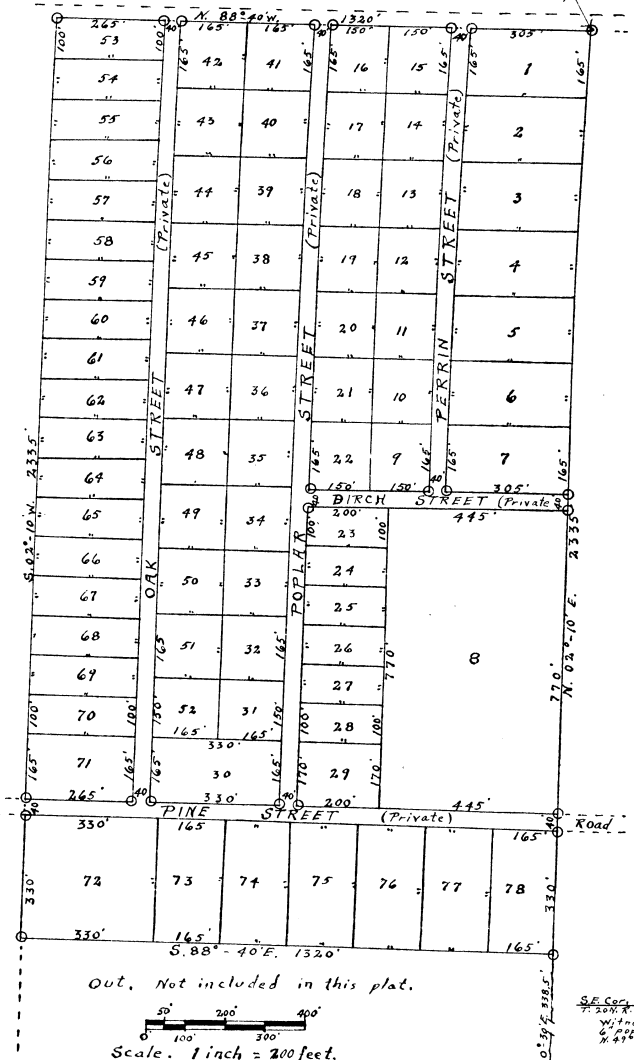
I hereby certify that the plat hereon shown is a correct one and that permanent monument consisting of 1 1/2" iron rods 36" long and encased in a concrete cylinder not less than 4" in diameter and 36" long have been placed at all points marked (o) thus as shown at all angles in the boundary of land platted and at all angles in the roads and at all intersections of the roads and boundaries as shown on this plat.

Witness my hand and seal this 23rd day of February, 1961.  
 H. C. Hill, Road

February 23, 1961  
 February 23, 1961  
 February 23, 1961  
 Director, Tax Division

Supervisor's Plat  
 of Eyrmer's Subd.  
 Recorded this 24th day of February, 1961.  
 A.M. 9:10  
 5  
 A. B. Black

N.E. Corner of W. 1/2 of the S.E. 1/4 of Sec. 35, T. 20 N. R. 3 E.  
 Point of Beginning



43662

S.E. Corn. Sec. 35  
 T. 20 N. R. 3 E.  
 Witness  
 10' poplar  
 5.11' W. 29'