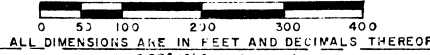


COPY

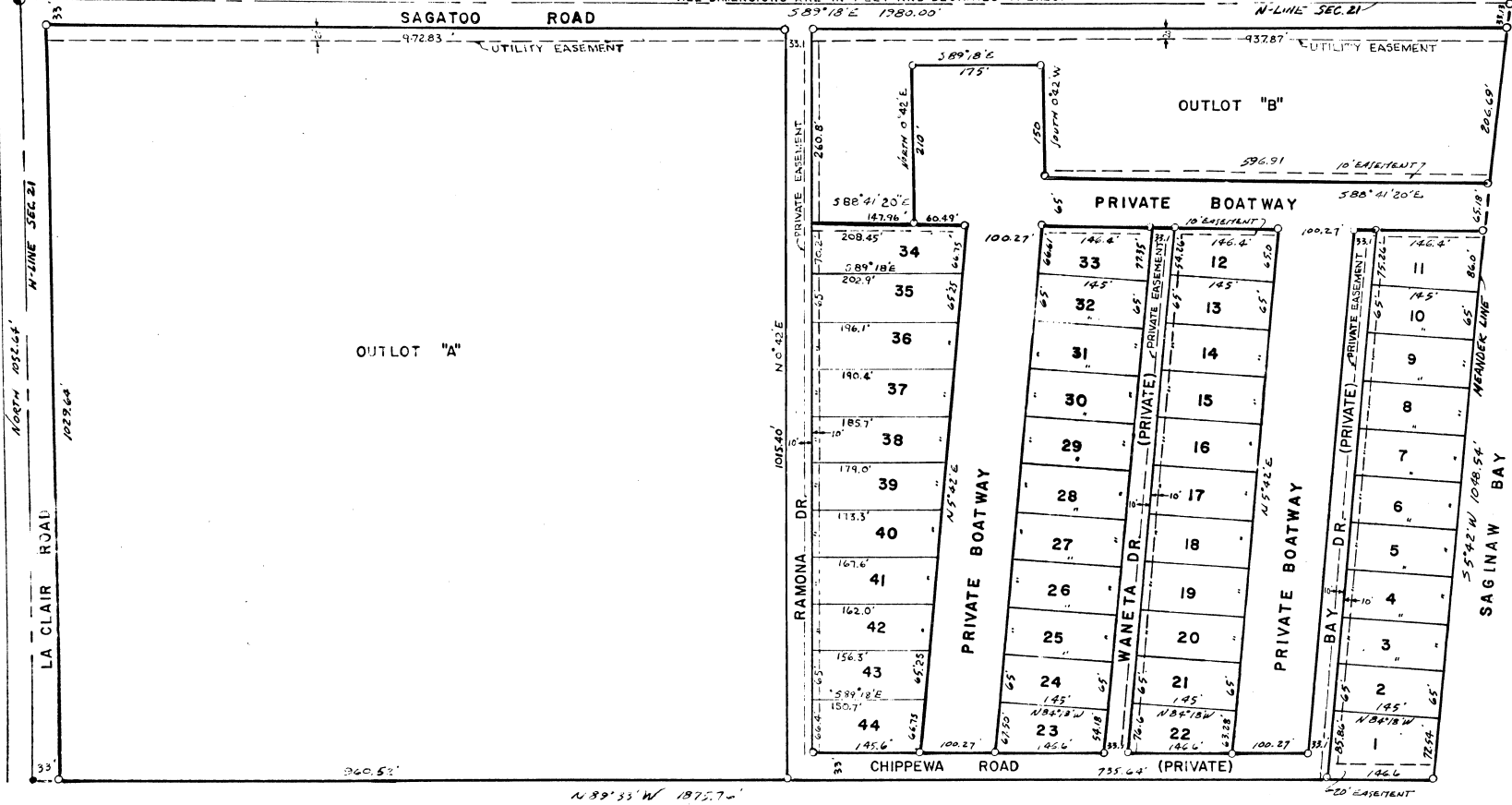
WALTON STORES SUBDIVISION

PART OF N1/20F THE NW 1/4 SECTION 21, T19N, R5E
LYING WEST OF SAGINAW BAY
STANDISH TWP., ARENAC COUNTY, MICHIGAN

SCALE: 1" = 100'



P.O.B.
N.W. COR. SEC. 21
T19N, R5E



43663

Kraft, Voss & Associates Flint