

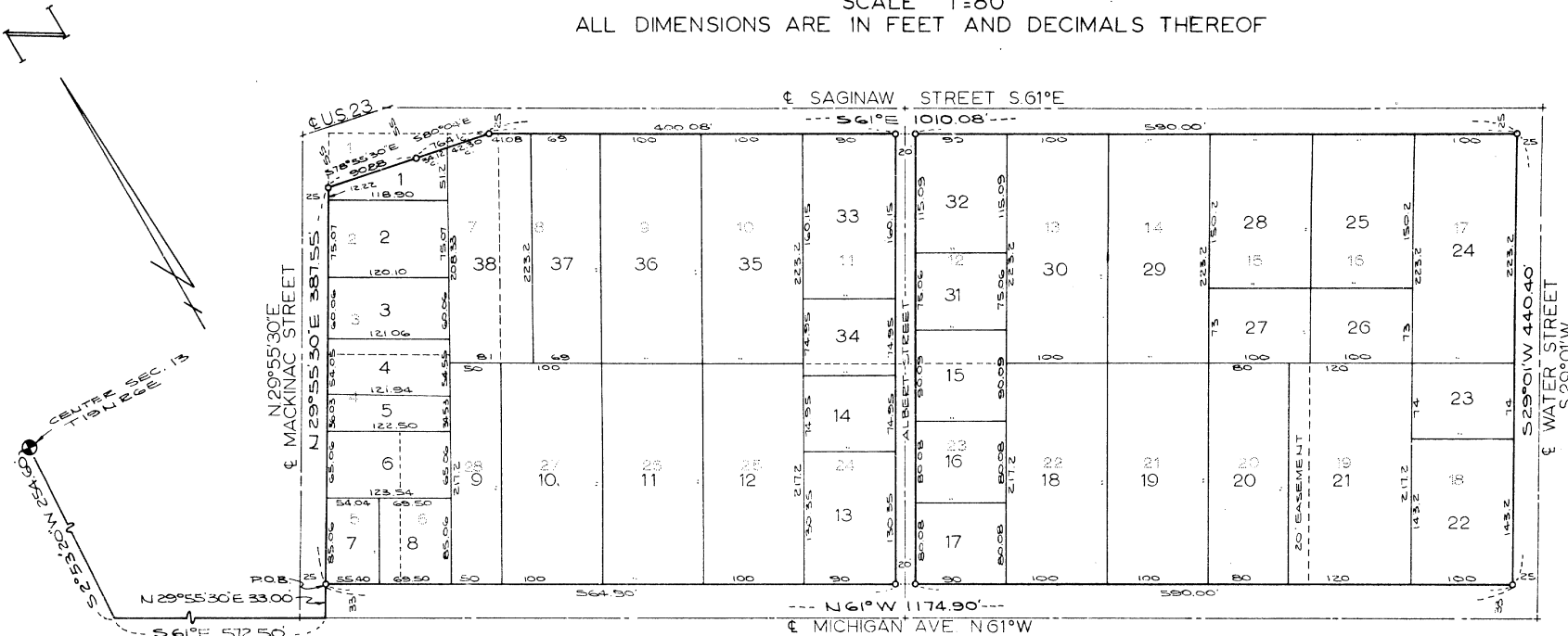
ASSESSOR'S REPLAT OF BLOCK 10

SUPERVISOR'S PLAT OF THE CITY OF AU GRES

SECTION 13, T 19N, R 6E, ARENAC COUNTY, MICHIGAN

SCALE 1"=80'

ALL DIMENSIONS ARE IN FEET AND DECIMALS THEREOF



CURVE DATA	
ANGLE	100° 18'
CHORD	20° 15'
ARC	76° 41'
CHORD	168° 20'
ARC	168° 41'
CHORD	100° 40'

I hereby certify that this map is a true copy of the original as recorded in the Register of Deeds for Arenac County, Michigan.

Witness my hand and the Seal of said County, Michigan, this 10th day of May, 1962.

Notary Public for Arenac County, Michigan.

By Richard E. Lovell

DEDICATION

KNOW ALL MEN BY THESE PRESENTS, THAT I, Christian Miller, Assessor of the City of Au Gres, Arenac County, Michigan, by virtue of authority in me vested by Section 51, Act 172, of 1929, having been duly authorized by the City Council have caused the land described in the annexed plat to be surveyed, laid out and platted, to be known as "ASSESSOR'S REPLAT OF BLOCK 10, SUPERVISOR'S PLAT OF THE CITY OF AU GRES, Section 13, T19N, R6E, Arenac County, Michigan", and that the streets and alleys as shown on said plat are now being used for such purposes, and that the plat conforms with the requirements of Section 51, Act 172, of Public Acts of 1929, as amended.

Witnesses:

Edwin A. Christie
Edwin A. Christie
Alma Cordova

Christian Miller
Christian Miller
Assessor of the City of Au Gres

CERTIFICATE OF MUNICIPAL APPROVAL

This plat was approved by the Common Council of the City of Au Gres at a meeting held February 1, 1962 and is in compliance with Section 19a and that the width of lots conforms with requirements of Section 30, Act 172, of 1929 as amended.

Odeal Brown
Odeal Brown, Clerk

CERTIFICATE AS TO STATE TRUNK LINE OR FEDERAL AID ROADS

We hereby certify that said plat appears to include land located on a state trunk line or federal aid road.

Avis Black
Avis Black, Register of Deeds

Douglas C. Black
Douglas C. Black, Clerk

Harry McCready
Harry McCready, Treasurer

Archie McCready
Archie McCready, Drain Commissioner

APPROVED _____ DATE _____

AS TO ACQUIRED RIGHT-OF-WAY ONLY

Horace J. Edmonds
Horace J. Edmonds
REGISTERED LAND SURVEYOR

CERTIFICATE OF APPROVAL BY COUNTY PLAT BOARD

This plat was approved on the 23 day of May 1962 by the Arenac County Plat Board.

Avis Black
Avis Black, Register of Deeds

Douglas C. Black
Douglas C. Black, Clerk

Harry McCready
Harry McCready, Treasurer

Archie McCready
Archie McCready, Drain Comm.

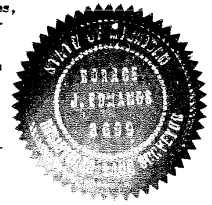
SURVEYOR'S CERTIFICATE

I hereby certify that the plat hereon delineated is a correct one and that permanent metal monuments consisting of bars not less than one-half inch in diameter and 36 inches in length, or shorter bars of not less than one-half inch in diameter lapped over each other at least 6 inches with an over-all length of not less than 36 inches, encased in a concrete cylinder at least 4 inches in diameter and 36 inches in depth have been placed at points marked thus (o) as thereon shown at all angles in the boundaries of the land platted, at all the intersections of streets, intersections of alleys, or of streets and alleys, and at the intersections of streets and alleys with the boundaries of the plat as shown on said plat.

Horace J. Edmonds
Horace J. Edmonds # 3699
Registered Land Surveyor

DESCRIPTION

The land embraced in the annexed plat of ASSESSOR'S REPLAT OF BLOCK 10, SUPERVISOR'S PLAT OF THE CITY OF AU GRES, Section 13, T19N, R6E, ARENAC COUNTY, MICH. is described as follows: Commencing at the center of Section 13, T19N, R6E, running thence S. 2° 53' 20" W., 254.60 feet; thence S. 61° E. 572.50 feet; thence N. 29° 55' 30" E., 33.00 feet to the Point of Beginning; Thence N. 29° 55' 30" E., 387.55 feet to the Southerly line of Highway U.S. 23; thence S. 78° 55' 30" E., 90.88 feet to the Point of Curve of a 3° 00' 40" curve to the left; thence S. 89° 01' E., 76.41 feet to the Southerly line of Saginaw Street; thence S. 61° E., 1010.08 feet; thence S. 29° 01' W., 110.10 feet; thence N. 61° W., 1174.90 feet to the Point of Beginning, containing 38 lots numbered consecutively from 1-38 inclusive.



ARENAC COUNTY

Assessor's Replat of Block 10 Supervisor's Plat

was Recorded this 11 day of May A.D. 1962 at 9:30 o'clock A.M. in 3 books of plats

Page 7

Avis Black

11766