

"FOREST LAKE NO.1"

PART OF SEC. 24 AND PART OF THE
N.E. 1/4 OF SEC. 23, T20N, R3E
MOFFATT TOWNSHIP, ARENAC COUNTY, MICHIGAN

All dimensions are in feet & decimals thereof

All curve distances are measured along the arc.

Scale 1" = 100'

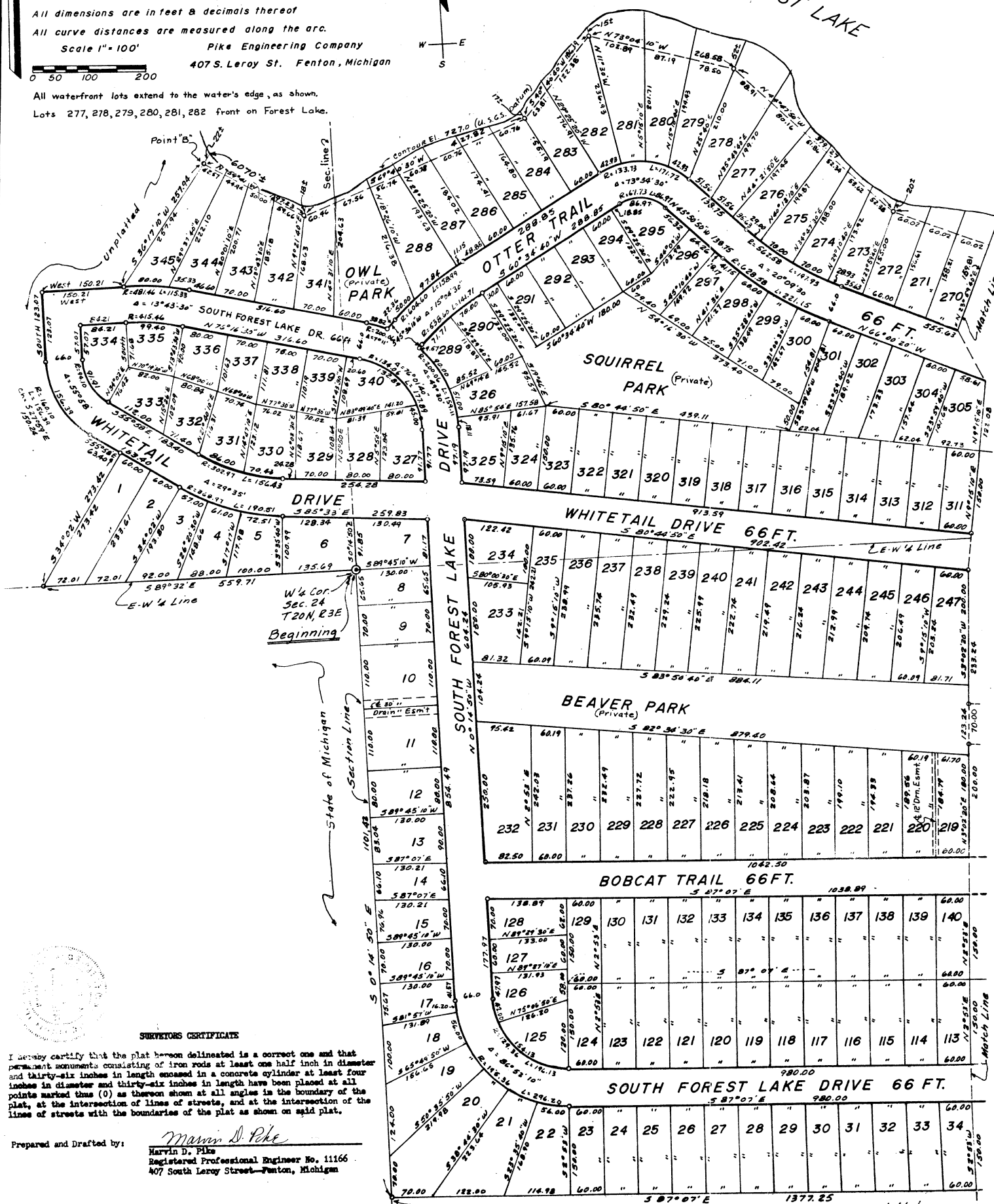
Pike Engineering Company

407 S. Leroy St. Fenton, Michigan

All waterfront lots extend to the water's edge, as shown.
Lots 277, 278, 279, 280, 281, 282 front on Forest Lake.



FOREST LAKE



SURVEYORS CERTIFICATE

I hereby certify that the plat herein delineated is a correct one and that permanent monuments consisting of iron rods at least one half inch in diameter and thirty-six inches in length encased in a concrete cylinder at least four inches in diameter and thirty-six inches in length have been placed at all points marked thus (O) as shown at all angles in the boundary of the plat, at the intersection of lines of streets, and at the intersection of the lines of streets with the boundaries of the plat as shown on said plat.

Prepared and Drafted by:

Marvin D. Pike
Marvin D. Pike
Registered Professional Engineer No. 11166
407 South Leroy Street—Fenton, Michigan

unplotted