

# "FOREST LAKE HEIGHTS"

PART OF THE N.E. 1/4, SEC. 23 AND PART OF THE  
S.E. 1/4, SEC. 14, T20N, R3E  
MOFFATT TOWNSHIP, ARENAC COUNTY, MICHIGAN

Pike Engineering Co.  
Fenton, Michigan

SURVEYOR'S CERTIFICATE

I, Marvin D. Pike, surveyor, certify:

"FOREST LAKE HEIGHTS"  
That I have surveyed, divided and mapped the land shown on this plat, described as follows: part of the NE 1/4 of Sec 23 and part of the SE 1/4 of Sec 14, T20N, R3E, Moffatt Township, Arenac County, Michigan, is described as beginning at the NE 1/4 corner of said Sec 23; th N 23°27' E 229.89 ft; th N 40°30' E 200.00 ft to Point "A"; th N 40°30' E 3/4 ft more or less to the water's edge of "Forest Lake"; th Southeasterly along said water's edge 4610 ft more or less; th S 36°17'10"W 10 ft more or less to Point "B"; said point on an intermediate traverse S 58°40' E 347.00 ft, and S 89°53'50"E 270.30 ft, and S 20°00' E 244.00 ft, and S 48°58'30"E 359.34 ft, and N 89°15' E 280.00 ft, and S 13°40' E 178.00 ft, and S 69°58'30"W 291.63 ft, and S 3°04' E 45.00 ft, and N 86°56' E 585.00 ft, and N 63°37'50"E 141.55 ft, and S 62°10' E 385.00 ft, and S 86°30' E 160.00 ft, and S 48°39'10"W 155.15 ft, and S 3°00' E 505.00 ft, and S 36°31'20"E 178.28 ft, and S 83°30' E 158.00 ft, and S 55°59'40"E 88.31 ft, and S 20°07'17"E 216.36 ft from Point "A"; th S 36°17'10"W 257.94 ft; th West 190.21 ft; th South 123.07 ft; th 156.39 ft along a curve to the left, Radius 160.10 ft, Central angle 55°58', Chord S 27°59' E 150.74 ft; th S 53°58' E 63.40 ft; th S 34°02' W 273.42 ft; th along the East and West 1/4 line N 89°32' W 2079.88 ft to the Interior 1/4 Corner of said Sec 23; th along the North and South 1/4 line N 09°31'30"W 2631.50 ft to the point of beginning. This plat contains 256 lots numbered 1 thru 256 both inclusive, and two private parks named Whipoorwill Park and Loon Park.

That I have made such survey, land-division and Plat by the direction of the owners of such land.

That such plat is a correct representation of all the exterior boundaries of the land surveyed and the subdivision of it.

That the required monuments and lot markers have been located in the ground or that surety has been deposited with the municipality, as required by section 175 of the act.

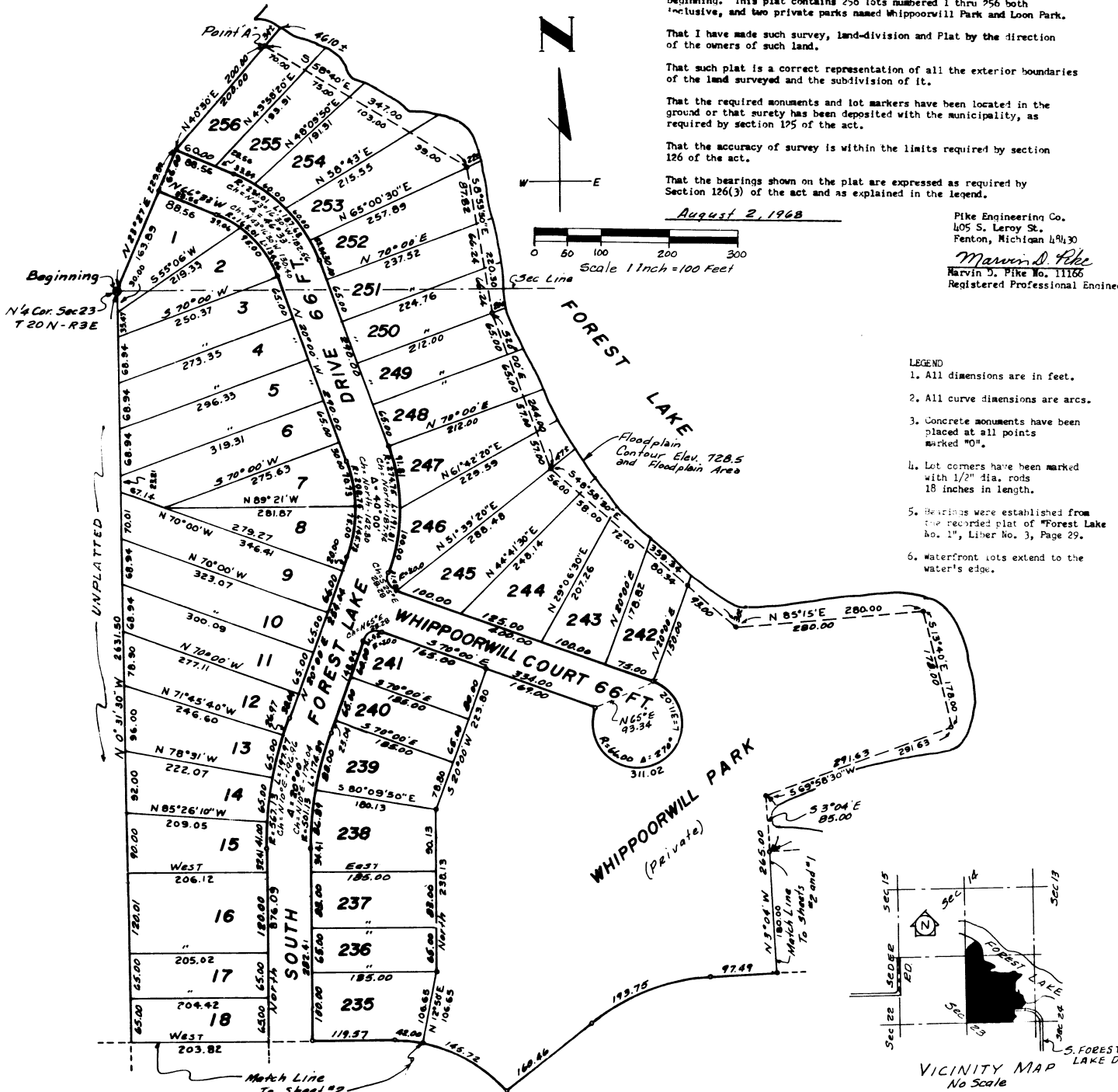
That the accuracy of survey is within the limits required by section 126 of the act.

That the bearings shown on the plat are expressed as required by Section 126(3) of the act and as explained in the legend.

August 2, 1968

Pike Engineering Co.  
405 S. Leroy St.  
Fenton, Michigan 48430

Marvin D. Pike  
Harvin D. Pike No. 11132  
Registered Professional Engineer



- LEGEND
- All dimensions are in feet.
  - All curve dimensions are arcs.
  - Concrete monuments have been placed at all points marked "0".
  - Lot corners have been marked with 1/2" dia. rods 18 inches in length.
  - Bearings were established from the recorded plat of "Forest Lake No. 1", Liber No. 3, Page 29.
  - Waterfront lots extend to the water's edge.

