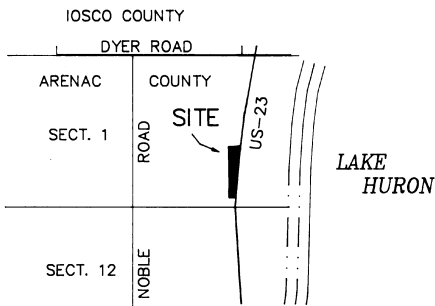
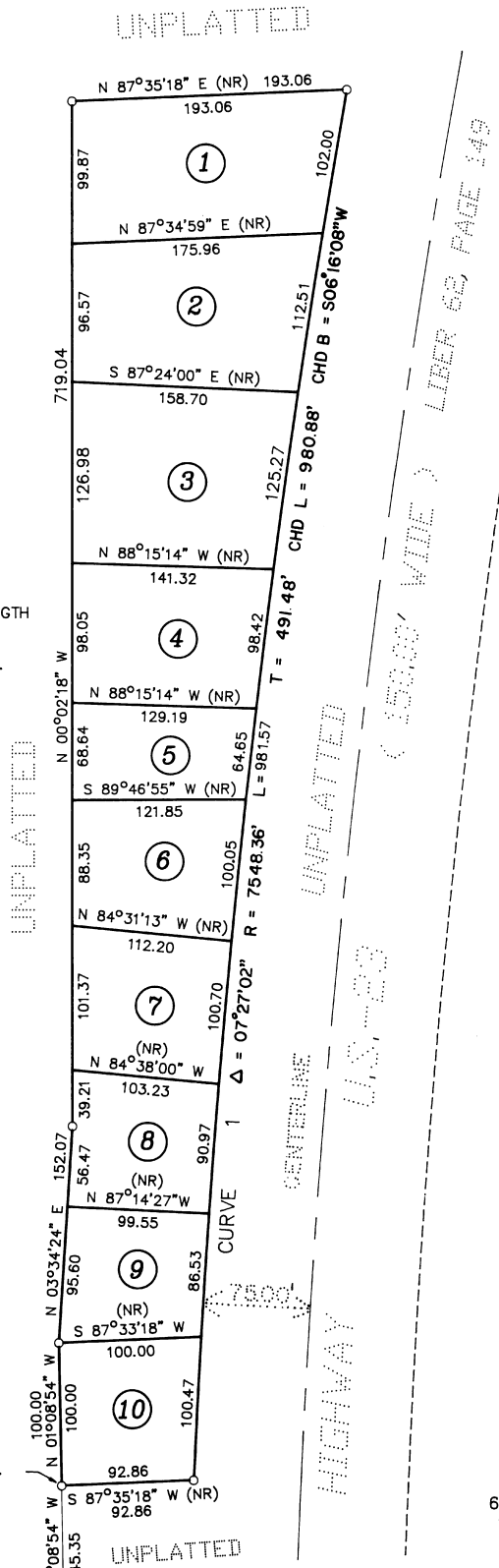


WHITNEY TOWNSHIP ASSESSOR'S PLAT #1

PART OF GOVERNMENT LOT 2, SECTION 1, T20N, R7E, WHITNEY TWP.,
ARENAC COUNTY, MICHIGAN.



1. ALL DIMENSIONS ARE IN FEET AND DECIMALS THEREOF.
2. ALL CURVE DIMENSIONS ARE ARC LENGTHS.
3. CONCRETE MONUMENTS, 4" IN DIAMETER, 36" LONG WITH 1/2" REBAR, HAVE BEEN PLACED AT ALL POINTS MARKED "O".
4. LOT CORNERS HAVE BEEN MARKED WITH 1/2" REBAR IRONS, 18" IN LENGTH
5. BEARINGS WERE ESTABLISHED FROM BROWN'S PINE WOOD PARK A RECORDED PLAT IN LIBER 2, PAGE 28-29, ARENAC COUNTY RECORDS.
6. (R) INDICATES RADIAL LOT LINE, (NR) INDICATES NON-RADIAL LOT LINE.



CURVE 1	
Δ	= 07°27'02"
R	= 7548.36'
T	= 491.48'
L	= 981.57'
CHD	= S06°16'08"W 980.88'

CERTIFIED TRUE COPY OF
RECORDED PLAT
BY DEPARTMENT OF COMMERCE

By Maynard R. Dyer
Maynard R. Dyer, P.E., N.C.S.
Manager
Subdivision Control Unit

Date July 14, 1995

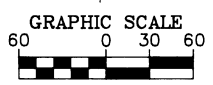


POINT OF BEGINNING N89°14'12"E 959.20 FT.
AND N01°08'54"W 345.35 FT. FROM
S 1/4 CORNER SEC. 1, T20N, R7E

S 1/4 CORNER
SEC. 1, T20N, R7E
LCRC L 2 P 46

S. LINE SEC. 1
N 89°14'12" E
(RECORDED AS)
N 89°14'06" E

WITNESS CORNER
TO M.C.
SEC. 1, T20N, R7E
LCRC L 2 P 46



(IN FEET)
1 INCH = 60 FT.

Granger and Associates, Inc.
Engineers • Surveyors

224 S. Main 211 Newman
Cheboygan, MI 49721 E. Tawas, MI 48730